

WEATHER			
	Min.	Max.	Prescip.
Wednesday, May 15	59	66	0.45
Thursday, May 16	57	72	0.16
Friday, May 17	57	73	0.11
Saturday, May 18	59	78	0.00
Sunday, May 19	59	80	0.00
Monday, May 20	48	69	0.00
Tuesday, May 21	50	81	0.00

ONE HUNDRED-FOURTH YEAR—No. 49

16 Pages This Week

CHELSEA, MICHIGAN, THURSDAY, MAY 23, 1974

15c per copy

SUBSCRIPTION: \$4.00 PER YEAR

The Chelsea Standard

QUOTE

"The size of a man can be measured by the size of the thing that makes him angry."
—J. Kenfield Morley.

School Millage Request Back On June Ballot

Chelsea School District's Board of Education has unanimously decided to return to the voters on June 10 with an operational millage request of 13.5 mills for two years. This is the identical request that was defeated last Wednesday, and will mark the third time in three months that the Board of Education has placed an operational millage figure on the ballot.

Of the 13.5 mill figure, which he termed "absolutely necessary" for maintenance of current educational quality prior to last week's election, Board President Howard Haselschwardt said, "If we are to hold the line on what we have, we must make another appeal to the citizens."

The request for 13.5 mills is composed mainly of a renewal of existing taxes, which stand at the 10.98 mill level. Of the remaining 2.52 mills, the board will reduce the debt retirement levy by 1.52 mills, to make the total increase levied on mill. Chelsea's operational millage figure has stood at 10.98 mills since the 1969-70 school year.

According to Chelsea School District Superintendent Charles S. Cameron, the millage request reflects a budget that has been tightly trimmed to provide the best educational programs with the funds available.

"Asking only one additional mill produces tight restrictions on our programs during these times of spiraling costs for materials, utilities, and all aspects of our operations," Cameron said at Monday night's board meeting. "With the renewal turned down by the voters, our budget is cut by 60 percent. Obviously, we must return to the voters or face terribly painful decisions just to keep our schools open."

At last week's Board of Education meeting to certify the election results, the board decided to issue notices of termination immediately to all teaching and administrative personnel, effective with the end of their 1973-74 contracts, and ordered Business Manager Fred Mills to freeze all spending of 1974-75 fiscal funds other than necessary emergency maintenance and operational expenses. Mills was also instructed to submit individual expenditure requests to the board for approval.

To emphasize its concern that Chelsea voters be made aware of the school's financial picture, the board has scheduled two public meetings prior to the June 10 election: the first, for parents of high school and middle school students, will be at Beach Middle school, Tuesday, May 28; the second, for parents of elementary school chil-

dren, is set for North Elementary school on Thursday, June 6.

Howard Haselschwardt explained that "School Board members and administrators will not only outline the entire financial picture, but will be available for questions and discussion at these meetings."

Haselschwardt urged any resident interested in working for passage of this operational millage to join the Board of Education's effort to "inform area voters of our crucial needs." Potential volunteers should call the school administration at 475-1377.

Rec. Softball Program Starts Tuesday

Chelsea Recreation Council's softball program will open for both slow and fast-pitch teams this Tuesday, May 28, ushering in expanded leagues and an expanded schedule.

Recreation Director Tom Ballstiere, predicting an "excellent year" for Chelsea's softball program, has announced that three new fast-pitch teams and four new slow-pitch squads will see action this year. In addition, this summer's schedule will include a regular season of 12 games, from which three league champions will be crowned, followed by two single-elimination tournaments to conclude the season.

Fast-pitch teams will be divided into two leagues: The National League, including Zion Lutheran, Westgate, Auto, Jiffy Mix, Dunlavy Farms, 3-D Sales & Service, and the Independents; and the American League, including St. Paul's Sweepsters, Chelsea Milling, Thompson's Pizza, and Chelsea Merchants.

Teams in the single slow-pitch league are Fortune Industries, Mark IV Lounge, Wolverine Bar, Rulea Farms, Chelsea Independents, Chrysler, Walt's Barber Shop, McCalla Feeds, Village Motor Sales, IPSCO, Chelsea Methodist church, and the Eagles.

Fast-pitch games will be played on the South Elementary school field for the first two weeks of the season; after that they are scheduled for the high school field.

National League fast-pitch teams will play Monday, Wednesday and Friday while American League teams will play Tuesday and Thursday.

Slow-pitch League will play on a new grass field behind the high school and on the South school field, once the fast-pitch teams (Continued on page eight)



WIXOM VISITORS and Chelsea hosts join for a group picture during Mayor Exchange Day observances Monday. Above, front row, from left, are Frederick Weber, Mrs. Don Wood, Gilbert Willis, mayor of Wixom, Mrs. Willis, Mrs. Sylvia Vangieson, and

Dr. Val Vangieson, council members from Wixom. In back, from left, are Bruce Galbraith, Mrs. Galbraith, Don Wood, Tom Dmoch, Dr. Richard Borton, Mrs. Tom Dmoch, Jodi Daniels, and Loren Keezer.

Exchange Mayor Tours Chelsea

Mayor Exchange Day in Michigan is not meant to be a day when a lot of hard-core, concrete work is done—it is more of a time to relax and talk about getting work done, and bragging about what "our" city has done.

In Coldwater, for example, Detroit Mayor Coleman Young received a pair of white shoes from fashion-conscious Coldwaterites.

Nobody visiting Chelsea Monday from Wixom got white shoes, but they did, apparently have a good time with their host village and its residents and officials.

Spending the day in the village were Gilbert C. Willis, mayor of Wixom, and his wife, Pearl, and Dr. Val Vangieson, council member and mayor pro-tem, and his wife, Sylvia.

Arriving in the morning, the group toured the Chelsea United Methodist Home, then adjourned to the Chelsea Community Hospital for a tour that included the new surgical facility.

No parallel to the Chelsea Medical Center exists in Wixom, the visitors said, as patients must visit surrounding areas like Livonia or Ann Arbor for treatment, which should serve to make Chelseaites very proud.

Wixom is approximately the same size in population as Chelsea, but has tripled in population in the past few years, primarily due to the location there of a Ford Motor Co. assembly plant, for a time the largest in the country, and a recently-completed sewer system that has facilitated growth.

Mayor Willis, noting that he had inspected Chelsea's 125th anniversary booklet from the celebration in 1959, said that his city "probably has the age," but not much of its actual heritage is intact, which any resident who participated in the Chelsea celebration would probably rate Wixom's loss.

The visitors and members of Chelsea's village government finished their Michigan Week opener with dinner and a lot of village-related talk in Jackson.

Tennis Team 7th in Regional Competition

Chelsea finished seventh in regional tennis action last Friday and Saturday, with Debbie Bertke in singles and the doubles team of Dan Hagen and Duane Luick earning points for the Bulldogs netters. Tuesday the team defeated Leslie's first-year squad soundly, 7-0.

Results in the regionals were: Randy Rottenbiller, Albion, defeated Jane Belser, 6-7, 6-1, 6-2. Ken Albrecht, Marshall, defeated Paul Marshall, 6-0, 6-0.

Debbie Bertke, Chelsea defeated Dave Loader, Hillsdale, 6-3, 6-2, in first round.

David DeLuhery, Pennfield, defeated Debbie Bertke, 6-1, 6-1, second round.

Shultz and Rabbit, Harbor Creek, defeated Quackenbush and Heydlauff, 6-1, 6-0. Owen and Flander, Harbor Creek defeated Verchereau and Umstead, 7-6, 7-6. (Continued on page four)

Craig Coltre Qualifies for State Meet

Only one Chelsea trackman, Craig Coltre, was able to qualify for the state track meet in last Saturday's regional meet at Michigan Center High school.

"We just didn't have a good overall performance," admitted Coach Bert Kruse. "We were able to score only 11 1/2 points. In some cases we performed well; others were something of a let-down. In any case, we simply didn't score anywhere near what we thought we could."

Albion paced the regional meet with 30 points, followed by Marshall with 24 1/2.

Topping Chelsea performances was Coltre's second place in 180-yard low hurdles with a time of 21.5.

Other Chelsea placers in the meet included a fourth in the shot put by Ishmael Picklesimer, with a put of 47 ft., 10 1/2 in., his best of the season.

Karl Gauss placed fifth in both 100- and 220-yard dashes, with times of 10.6 and 23.7, respectively.

Bulldog 880 and 440 relay teams also finished fifth, with the 880 relay team (Howard Salyer, Dale Poertner, Dennis Bauer and Karl Gauss) recording a 1:35, season's best for them. The 440 team (Don Pierson, Dale Poertner, Howard Salyer, and Craig Coltre) ran a 46.1.

Howard Salyer also recorded his best time, :52.5 in the 440-yard dash, but could only manage a fifth for his efforts.

Rick Sweeney's fifth place tie in the high jump earned the final 1/2 point.

Bulldogs came back Monday afternoon, however, with a 73-40 defeat of Willow Run that ran their season dual meet record to 8-1.

Coach Kruse explains that "basically this was a situation where Chelsea didn't run a number of men and Willow Run, with only a small squad, was allowed to use some of their athletes in more events than is normally allowed."

We lined up this meet so that we could allow some of our runners to score and also allow some of our runners to try some different events. We were satisfied with the results."

Leading Chelsea trackman was Howard Salyer, who won long jump, 880-yard run, and 180-yard low hurdles, and placed third in high jump. Rick Sweeney took high jump and high hurdles.

(Continued on page four)

Golfers Second In Conference Final Standings

Chelsea golfers managed only a fourth place in Monday's conference meet at Salem Hills Golf Course in South Lyon, thereby placing second in the conference behind Brighton. Brighton tied with South Lyon for the lead in the conference meet.

Scores in the conference meet were Brighton and South Lyon, 359; Saline, 363; and Chelsea, 365. Mike Fouty shot an 89, and Chris Rabbitt, Dan Shirilla, Roger Policht and Jeff Policht all shot 92s for the Bulldogs.

Chelsea completed its successful dual meet season last Friday, downing Novi, 177-180. Mike Fouty was medalist in that meet with a 42, while Dan Shirilla shot 47 and Chris Rabbitt and Vic Steinbach each recorded 44s. Junior varsity golfers also won their match, 201-230.

(Continued on page three)

Baseball Team Evens Record For Season

Chelsea's baseball squad evens up their league record at 6-6 Tuesday night with an 8-3 defeat of Milan.

Big hitters for the Bulldogs were Perry Johnson, who clouted a three-run homer, and shortstop John Houle, who pounded out a pair of doubles and three RBIs.

Jeff Sprague, Tres McCollum, Todd Orbring, Ron Clark, and Bill Clark each provided the local squad with one hit.

Bill Clark was winning pitcher. Chelsea played South Lyon Wednesday night in a game that occurred after pre-time. Friday they will meet Dexter at 4:15, and then go against Dexter again Saturday at 1 p.m. in the qualifying game of the district tournament.

Line score:

Chelsea040-100-3-8 8 0
Milan010-002-0-3 7 3

Girls Track Team Places In Regional

Chelsea girls track squad edged out Saline Tuesday afternoon, 50-41, grabbing themselves a league title of sorts, much to their delight.

Chelsea and Saline are the only schools in Southeastern Conference who field girls track squads; whoever takes their meet thus takes the conference.

The meet was a tight one until the end, however, when a first place in the 440 relay was turned in by a team of Annette Gaken, (Continued on page four)

Memorial Day Services Set For Monday

Plans have been formalized for the annual Memorial Day parade, Monday, May 28. Donald O'Dell will be acting parade marshal, with Jerry Platt serving as officer of the day.

The parade is scheduled to form at 9:30 a.m. in the municipal parking lot and will step off at 10 a.m. to follow the usual route through the village.

The parade will be led by color units from the American Legion and Veterans of Foreign Wars, followed by a firing squad and local veterans. Chelsea High school band will provide the marching music for Boy Scouts, Girl Scouts, Cub Scouts and Brownies who will follow the cars in which the various speakers will ride. Beach Middle school's band will be next in line, followed by children walking or riding decorated bicycles.

The parade will end at Oak Grove Cemetery, where a commemorative ceremony will be held to honor America's war dead. Ray Lutovsky, master of ceremonies, will open the service, followed by the invocation by the Rev. James Stacey. Mrs. Merle Barr will then introduce the members of the American Legion Auxiliary.

The Memorial Day observance will continue with a selection from the high school band under the direction of Warren Mayer, and an address by Steve Bennett, a member of Chelsea High school's debate team.

The service will conclude with a salute from the firing squad, taps, and "The Star-Spangled Banner" played by the bands. A benediction from the Rev. Stacey will end the ceremony.

The parade will then re-form to march back to the parking lot.

An open house at the American Legion Home will follow the observances. A pot luck supper is also planned.

For further information, contact Pat Merkel, 475-1824.

School Board Briefs

Present at the meeting of the Board of Education of the Chelsea School District on May 20 were President Haselschwardt, Trustees Hodgson, Daniels, Irwin, Koenn, Schafer, and Stirling, Superintendent Cameron, Business Manager Mills, and Principals Lane, Conklin Wojcik, and Benedict.

Guests at the meeting were Arthur Schiller, Robert Allhouse, Gary Wright, Mrs. Gary Wright, and Ed Brown.

The meeting was called to order by President Haselschwardt at 8:15 p.m.

The board accepted the minutes of the May 15 meeting as presented.

Superintendent Cameron presented the board with a copy of a letter from DiAnn L'Roy regarding 5th grade classes at Beach school. Joe Rossi was at the meeting representing the Chelsea Education Association. The present housing of the 5th grade pupils and the nine-period day at the high school will have to be continued for the 1974-75 school year.

Superintendent Cameron presented a letter from Leonard Solomon indicating that the CEA is requesting arbitration on Grievance 2-M, regarding agency shop.

The board held a discussion of the millage request for the June 10 annual election.

(Continued on page five)

Beach Orchestra Will Present Its Premier Concert

Beach Middle school's 5th and 6th grade orchestra will present its premier performance next Thursday, May 30 at 7:30 p.m. at Beach.

The orchestra will combine with the 6th grade band to present, among other selections, Haydn's "Surprise Symphony," while the orchestra alone will play several folk dance selections.

Conducting will be handled by Warren Mayer, Ronald Harris, and Truete Amegh.



YOUNG AUTHORS from South school who attended last Saturday's Young Authors Conference. In Dexter are, from left, Ted Merkel, 2nd grade; David Wojcik, 3rd grade; Bill Merkel, 3rd grade; Michelle Hellner, 4th grade; Diane Barais, 4th grade, and Tanya Matloff, 2nd grade.

Enthusiasm High at 12-School Conference for Young Authors

Bill Merkel has written a surprisingly moralistic tale entitled, "The Hare and the Turtle."

Michelle Hellner's latest work, "Jimmy Cricket, Substitute Teacher," is a delicate and pointed bit of whimsy.

Karen Kiel uses village pride as the source of one of her poems; a frisky puppy named Sam for another; and a talking, but lonely, apple tree as the basis for a short story.

Although the publication of these works thus far is limited to the home-made booklets that were transported to their Young Authors Conference in Dexter last week-end, these three and seven other young Chelsea writers—Cathy Doll, Laura Hines,

Chris Martin, David Wojcik, Ted Merkel, Diane Barais, and Tanya Matloff—received more than adequate encouragement to continue from some of those who know best—professional authors.

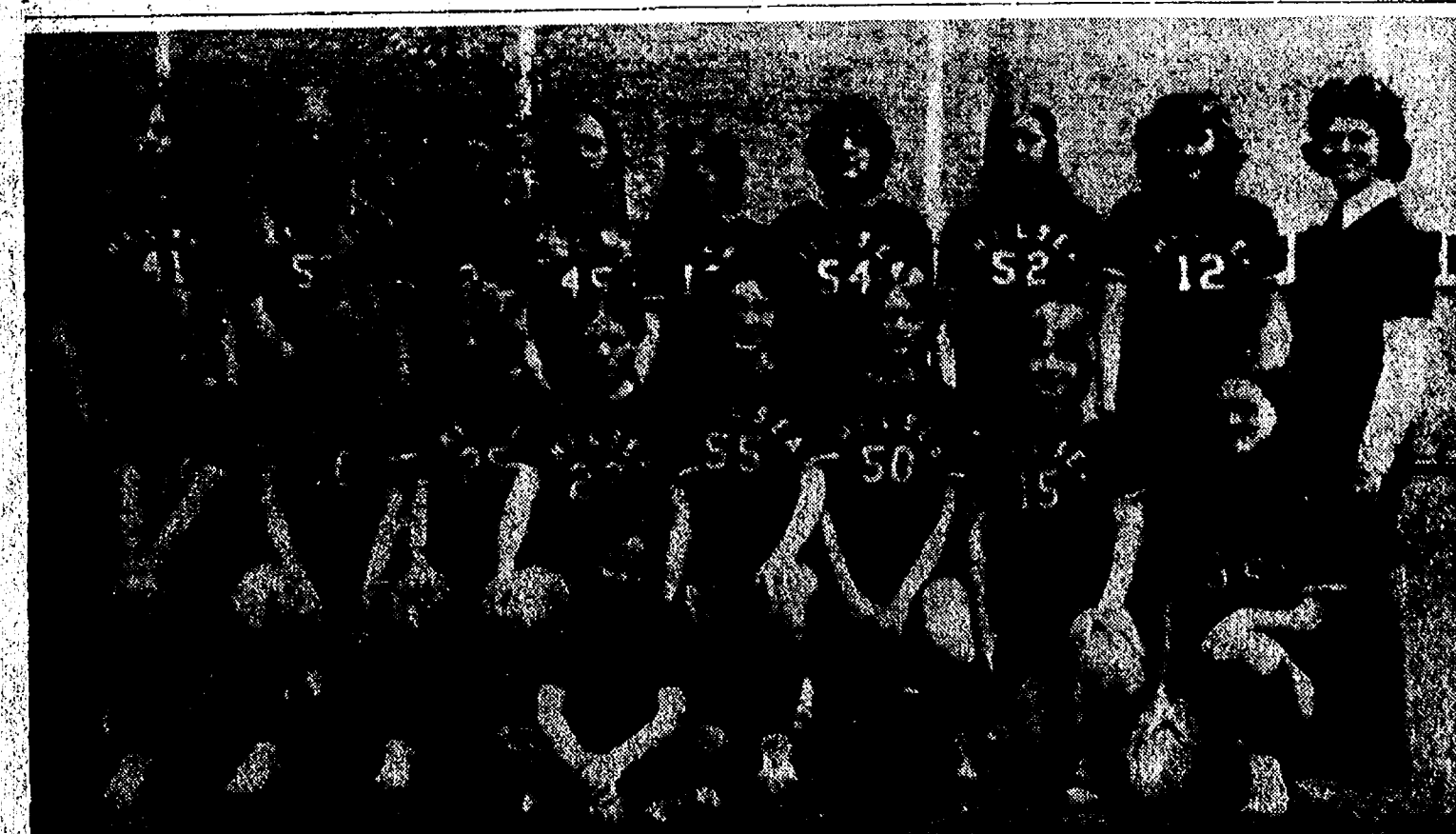
Peg Yerlan, a successful author of children's books and a Dexter resident, told a group of the young authors at the conference, "I could show you a drawerful of rejection slips from publishers saying 'thank you, I liked your story, but it isn't right for us just now.'"

Already the 2nd, 3rd, and 4th graders are armed with some degree of reader acceptance, however, since their entries to the conference were judged by their fellow students, rather than

teachers. "In that way, we felt our young authors gained a real sense of writing for an audience, rather than doing a school assignment," explained Georgine Donroe, 2nd grade teacher at Dexter's Bates school, who was one of the staff participants in the conference.

If audience appeal is a factor in writing—as of course it must be—the Chelsea students' entries displayed a remarkable attentiveness to their peers' fantasy and real-life favorites.

David Wojcik, a 3rd grader at South school, presents a futuristic tale of pre-historic monsters with names like Godzilla and Rodan and Baby Mothara (and one (Continued on page four)



LEAGUE CHAMPIONS: Chelsea's girls softball team earned that title Tuesday night, defeating Dexter, 12-6, to finish the season undefeated. From left, front row, are Brenda Salyer, Julie Asmussen, Teresa Breza, Pam Boyer, Bonnie Augustine, Alice Juergens, Kathy Schmitke, and Pam Blackwell. In back, from left, are Lori Fritz, Cindy Van Riper, Char Steinaway, Mary Clark, Lorraine Clark, Lori Schrader, Kathy Kuhl, Marilyn King, and Coach Ann Schaffner. In front is Patti Hume, manager.

Girls Capture Softball Crown

Chelsea's girls track squad showed more than adequate spunk in last Friday's A-B Regional track meet at New Boston Huron, placing in three events, 100-yard dash, 220-yard dash, and 440 relay.

The team's performance in the meet, which was dominated by Chelsea, was particularly impressive in the 220-yard dash, with a time of 1:28.1. She ran a total of seven races, including two preliminaries and a final, and then

petition with teams representing both Class A and Class B schools.

Sue Frisbie, who has turned in a number of fine performances in competition this season, placed fourth in 100-yard dash with a 1:22. Frisbie's time was only one-tenth of a second off the first place runner's time. She also earned a fifth in the 220-yard dash, with a time of 1:28.1. She ran a total of seven races, including two preliminaries and a final, and then

anchored the winning 440-relay team. Chelsea's 440-relay team, which "started the season running 58s," according to Coach DiAnn L'Roy, edged out champion Lincoln Park for fifth with a time of :54.3, its best of the season. Team members are Nancy Wonders, Kathy Treado, Annette Gaken, and Sue Frisbie.

Judy Powers, while not placing, ran her best time in the 880, 2:43.2, which was eighth best time in that event.

Uncle Lew from Lima Says:

DEAR MISTER EDITOR:

Zeke Grubb proved to the fellows at the country store Saturday night that even a blind hog finds a acorn once in a while. Zeke drew on his wide experiences in life and his years of reading newspapers and farm journals to finger out that if everybody in this country worked for the Government, they wouldn't be anybody left to support the Government.

What got Zeke into research on this discovery was a piece he saw where the number of folks on Government payrolls is growing twice as fast as the United States population. The item said six out of ever 10 new jobs are in some level of Government from the courthouse to the White House. Zeke said 14 million people now are on public payrolls, and by 1980 almost 17 million Americans will be paid out of the taxes paid by the rest of us.

Zeke said he was reminded of an estimate out of Russia some years back where they figured out over there that at the rate they were going the hole adult population soon would be doing Government planning, and nobody would be left to carry out the plans. We've got just about the same situation here, allowed Zeke, as more people demand more Government services that demand more wages that demand more revenues that come from the folks demanding the services.

Ed Doolittle said the strain is being felt everywhere. He said he had saw where by June 30 the national debt will be up to \$490 billion, a jump of 34 per cent in five years. We have to pay \$39

billion a year on interest on the money we owe, Ed said, and this is twice what it was in 1969. Ever man, woman and child in this country that is enjoying all the services by all them Government workers owes \$2,802 of that debt, Ed declared.

What we're going to have to do, broke in Clem Webster, is work out a system like them nuclear breeders that make more atomic fuel than they use to generate electricity. That'll be like the old deal where these fellows was going into the cat skin business. They were starting with a million cats that would eat four million rats that would eat the remains of the skinned cats, and the cats and rats would multiply happily ever after.

Actual, went on Clem, he had saw where this feller in a factory got 25 cent from 1,000 workers to buy a gift for the boss that was getting married. He bought 1,000 packs of cigarettes with the \$250, removed the coupons from the smokes and traded them for a silver service for the boss and then he give each worker a pack of cigarettes, and got himself a fishing rod when he traded in the stamps he was give when he bought the cigarettes.

Folks set up nights thinking, Mister Editor, I saw where last year Congressmen sent back home more than 16,000 flags that had flew over the Capitol. Stuck with just 365 days a year, they got a special flagpole hid where 50 flags a day is run up and right down.

Yours truly,
Uncle Lew.

Senator Ballenger Addresses Farm Bureau Groups

State Senator William S. Ballenger cautioned six Farm Bureau groups Friday evening, May 10, that they should carefully review the provisions of the newly enacted Green Belt Bill (H.B. 4244) before deciding whether to enter into its provisions.

Speaking to the Iron Creek, Kossel, Pleasant Plains, Fre-Lg, Happy-Go-Lucky, and Friendly Farmers Farm Bureau Community Groups in Manchester, Bridge-water, Lodi, and Scio townships, Ballenger said that, "Whether or not Michigan turns into a giant slab of concrete and high-rise apartments will depend upon the farmer."

Noting the erosion over the past quarter century of prime farmland to ever-increasing urban development, Ballenger said the farmer was being forced out of business by "confiscatory property tax rates."

"The Green Belt Bill, however, will ease this pressure, since it calls for the taxation of agricultural land on the basis of its use for farming, rather than its potential or market value. The farmer who wishes to remain a farmer can now do so," declared Ballenger.

Senator Ballenger, candidate for the Sixth Congressional seat being vacated by incumbent Charles E. Chamberlain, has been chairman of the Senate Agriculture and Consumer Affairs Committee since 1971.

Other than the Green Belt Bill, which he helped to write in House-Senate conference, Ballenger's accomplishments in the agricultural field have included passage of Michigan's first-in-the-nation Agricultural Marketing and Bargaining Act and winning the 1972 Distinguished Service to Agriculture Award presented by the Michigan Agricultural Conference. He also recently introduced a new bill to prevent catastrophic loss incurred by dairy farmers by hiking indemnity values for animals lost through tuberculosis, brucellosis, or Bang's Disease.



LEST WE FORGET...

Memorial Day- May 27

MICHIGAN MIRROR

By Elmer E. White, Secretary, Michigan Press Association

Long Time Coming

A tax break for farmers, aimed at halting creeping urbanization of Michigan agricultural land, is in the offing—after a years-long struggle by rural interests.

Sponsor of the bill, Rep. Dale Warner, R-Eaton Rapids, says its major purpose is to "stop careless destruction of good farmlands in areas near developing cities." The legislature gave final approval to the bill earlier this month and there is expected to be no problem in gaining Gov. William Milliken's signature.

Under the measure, farmers would contract with the state to limit use of their agricultural land for 10 years.

If the contract were approved by the state and by a local governing unit, the farmer would qualify for a credit against his state income tax. That credit would equal the amount by which his property taxes exceed seven percent of the household income. (For owners of incorporated farms, the figure would be seven percent of taxable income.)

If a farmer backed out of the agreement before the 10 years elapsed, he'd be penalized for the amount of the tax credit he'd collected, plus six percent annual interest.

Backers figure the bill will cost the state \$6 million to \$10 million a year.

Elton Smith, president of the Michigan Farm Bureau—which for years fought for tax relief for farmers—called the legislation "a positive step to assure a healthy and viable agriculture in Michigan."

"Farmers have been concerned about the availability of land, the

one irreplaceable resource needed to produce food," Smith said. "We have been alarmed by the thousands of acres of prime farmland lost each year from agricultural production because of an unfair taxing system."

"This legislation will help slow down the sacrifice of productive farmland to factories, shopping centers and urbanization, and also help insure that Michigan agriculture will have adequate land to produce the food our citizens need."

Youth Moves Ahead

An 18-year-old governor? Could be, if a measure pending in the Senate is passed and approved by voters this fall.

The legislation would lower the age requirements for governor and lieutenant governor from 30 and for legislators from 21 years. The House already has approved the proposal, which was reported from the Senate Judiciary Committee recently.

Rep. Jackie Vaughn, III, sponsor of the measure, says he sees no major problems in getting Senate approval. Vaughn, a Detroit Democrat, may find some opposition to the lower age requirement for the state's top offices, however.

There appears to be some concern over whether 18-year-olds would be too young to run the state as governor and lieutenant governor.

Watch the Horses

Mosquito season is at hand, and with it, the danger of disease for Michigan horses.

The Agriculture Department warns horse owners that they

should have their animals vaccinated for equine encephalomyelitis—a form of sleeping sickness that Director B. Dale Ball says can only be avoided by preventive action.

The Eastern and Western versions of the disease (EEE and WEE) are mosquito-carried viruses that attack horses, certain birds—and even humans in some cases. But Dr. John Quinn, chief of the department's animal health division notes that humans are rarely infected.

"Last year several confirmed cases of EEE (in horses) were discovered in Michigan through laboratory analysis," Quinn says, "and we certainly don't want a similar outbreak this year."

The department says effective vaccines are available and, when given early in the season, will not affect training programs and will provide protection for one year.

A Candidate Again?

Zoltan Ferency, the colorful former Michigan Democratic Party chairman who ran unsuccessfully against George Romney for the governor's chair in 1966, is considering another gubernatorial race. This time he'd be a Human Rights Party candidate.

Ferency, who gained a bit of fame when the late President Johnson mispronounced his last name, left the Democratic Party more than three years ago. He's now an associate professor at Michigan State University.

JUST REMINISCING

Items Taken from the Files of The Chelsea Standard

4 Years Ago...

Thursday, May 21, 1970—

James Edward Pinney, son of Mr. and Mrs. James E. Pinney, Sr., of 16450 Cavanaugh Lake Rd., and Vicki Lynn Elsie, daughter of Mr. and Mrs. Paul Elsie, of 211 Beaufort St., Manchester, have been named two of the recipients of the more than 1,000 University of Michigan Regents Alumni Award offered to graduating high school seniors this year, in recognition of their outstanding academic achievement.

Mrs. Arthur (Anne) Steinway was elected on May 16 to the position of Michigan Jaycee Auxiliary president at the Jaycee state convention in Detroit. In her new position, Anne will assume the responsibility of 24 districts covering all of Michigan and composed of 182 local auxiliaries with a total membership of 8,000 young women.

Mary Lill Blinfort, daughter of Mr. and Mrs. Howard W. Blinfort of 610 S. Main St., has been notified that she is one of the 10 winning soloists to be honored during the Youth Arts Festival, scheduled for Saturday, May 23, in Jackson.

Walter J. Brown, Jr., local Jaycee president, was named one of the five outstanding Michigan Jaycee presidents at the State Awards Banquet Saturday night. The award was based on his involvement in the local chapter and the local community.

14 Years Ago...

Thursday, May 26, 1960—

James Gaken, chief miller at Chelsea Milling Co., left by jet plane Sunday for St. Louis, Mo.,

where he attended the technical conference and trade show of the National Association of Operative Millers.

David McLaughlin, Chelsea High school sophomore, placed second in the low hurdles at the state track meet at Mt. Pleasant Saturday. He set a new Chelsea High school record for the low hurdles, 20.6 seconds, to beat his own previous record of 20.8 seconds.

Twelve students in grades 7 through 12 were presented with Kiwanis citizenship awards at Monday's Kiwanis Club meeting. Winners were James Collins and Linda Fisher, seniors; Carol Cameron and Daniel Mayer, juniors; Nancy McCalla and Donald Atkinson, sophomores; Carol McCalla and Jack Howard, freshmen; Susan Schroon and John Hand, 8th graders; and Donald Hinderer and Jane Fals, 7th graders.

Three representatives of the Chelsea Jaycee Auxiliary, Mrs. Robert Vanderkelen, Mrs. Elton Guenther, and Mrs. Merle Leach, attended the state convention of the Jaycee Auxiliary last week and accepted for the Chelsea chapter a first-second; and third-place honor in the state scrapbook contest.

24 Years Ago...

Thursday, May 25, 1950—

R. B. Dexter, owner and operator of Dexter's Meat Market, purchased Kolb's Grocery, located in the same store building, from W. G. Kolb on Monday. Dexter, who has been in business in Chelsea since 1929, will open a newly-decorated store Friday under the name of Dexter's Pure Food Market.

The store will carry a complete line of groceries and meats.

Twin towers of triangular steel pipe construction, rising to a height of 240 feet are presently about half completed on the W. H. McAtee farm on Sylvan Rd. The towers are part of a new television booster station being erected on the farm for station WKZO, Kalamazoo, to serve as a private relay system which will be used to relay programs from television stations in Detroit and Toledo to the WKZO-TV station in Kalamazoo.

Three Chelsea High school seniors, Virginia Quait, Patricia Murphy, and William Kossika, have been announced as among the 500 graduating seniors of Michigan High schools to be awarded Regents-Alumni scholarships at the University of Michigan.

Fourth graders report that Carol Aldrich's team played Joyce Black's team a game of softball last week. Joyce's team won by four runs; the score was 17 to 13.

34 Years Ago...

Thursday, May 23, 1940—

Prof. Russell C. Hussey of the University of Michigan geology department, accompanied by a group from U. of M., were in Chelsea Saturday and visited the cornfield at the Methodist Old People's Home where bones of an ancient animal were uncovered last week. Dr. Hussey identified the bones as those of a mastodon.

Bert Conlan and David Mohrlock have been appointed by village president A. D. Mayer as the members of the village board of review, which will be in session at the Sylvan Town Hall on June 4, 5, 10, and 11.

Chelsea's district spelling champion, Eva Harris, out-spelled 40 of the select 53 participants in competition for Michigan's Champion Speller, but was unable to spell "chronology."

SMITH'S SERVICE, INC.

announces its

STORE OPENING

at 11453 Jackson Rd. (Lima Center)

GROCERIES - BEER - WINE

HOURS: Mon. thru Sat., 7 a.m. to 9 p.m.

Sundays, 1 p.m. to 6 p.m.

BRAD - PAULINE - GEORGE - SHARON
RON - JEAN

40,000 4-INCH GERANIUMS

85¢ ea. \$9.00 doz.

3" GERANIUMS - 39¢ ea. or 3 for \$1



POTTED PLANTS

Hardy Mums 50¢ ea.
Tuberous Begonias 85¢, \$9.00 doz.
Fuchsias 85¢, \$9.00 doz.
Patio Pots of Combination Plants \$6 up
Window Boxes Combination Plants \$7 up
Hanging Baskets wide variety, filled \$5 up
Cemetery Urns filled \$7.50 up
Selectin of Other Small lants 39¢, 3 for \$1

FLOWERING PLANTS

Flowering Plants 48¢ pak., \$4.50 flat

★ Petunias ★ Pansies ★ Snapdragons
★ Zinnias ★ Coleus ★ Carnations
★ Asters ★ Celosia ★ Alyssum
★ Marigolds ★ Lobelia ★ Delphinium
★ Moss Rose ★ Verbena ★ Begonias
★ Phlox ★ Salvia ★ Dwarf Dahlias

VEGETABLE PLANTS

Vegetable Plants 48¢ pak, \$4.50 flat

★ Tomatoes ★ Broccoli
(Most popular varieties) ★ Sweet Onions
★ Peppers ★ Egg Plant
★ Cabbage ★ Sweet Potatoes
★ Brussel Sprouts ★ Cauliflower
★ Head Lettuce ★ Red Cabbage

Patio Pots of Tomatoes \$1.49

Potted Tomatoes 39¢, 3 for \$1

Cucumbers - Muskmelons - Watermelons

OPEN MON. thru SAT. 8 a.m. to 7 p.m.

OPEN SUNDAY 10 a.m. to 5 p.m.

Free Local Delivery every day on all items except Annuals.

All Items Grown in Our Greenhouses.

CHELSEA GREENHOUSE

CHARTER MEMBER FTD — WE TELEGRAPH FLOWERS ANYWHERE

7010 LINGANE ROAD, CHELSEA

PHONE 475-1353, 475-1354, 475-9313

Howell Livestock Auction

Starts 1 p.m. Every Monday
Mason 677-8941

The Wise Owl Says Ship to Howell
Phone 546-2470. Bim Franklin

Market Report for May 20

CATTLE—

Good to Choice Steers, \$39 to \$42
Good-Choice Heifers, \$36 to \$39
Fed Holstein Steers, \$34 to \$36.50
Utility and Standard, \$33 and down.

COWS—

Heifer Cows, \$32 to \$34
UL-Commercial, \$28 to \$32
Canner Cows, \$25 to \$28
Fat Beef Cows, \$25 to \$27.

BULLS—

Heavy Bologas, \$35 to \$38
Light and Common, \$34 and down.

CALVES—

Prime, \$58 to \$62
Good-Choice, \$50 to \$58
Heavy Export, \$45 to \$60
Cull & Mqd., \$30 to \$50

FEEDERS—

300-600 lb. Good to Choice Heifers, \$36 to \$42
400-700 lb. Good to Choice Steers, \$40 to \$48
300-500 lb. Holstein Steers, \$42 to \$46
500-600 lb. Holstein Steers, \$32 to \$42

SHEEP—

Short Slaughter Lambs, \$45 to \$48
Good-Utility, \$35 to \$40
Woolled Spring Lambs, \$48 to \$50
Slaughter Ewes, \$8 to \$12.50
Feed Lambs, all weights, \$35 to \$40

HOGS—

200-250 lb. No. 1, \$28 to \$29
200-250 lb. No. 2, \$27 to \$28
250 lb. and up, \$25 to \$27
Light Hogs, \$28 and down.

Sows—

Fancy Light, \$18 to \$20
200-300 lb., \$18 to \$20
600 lb. and up, \$17 to \$18

Rears and Stags—

All weights, \$20 to \$24

Feder Pigs—

Per Head, \$18 to \$26

HAY—

1st Cutting, 50¢ to \$1.00
2nd Cutting, \$1.00 to \$1.25

STRAW—

Per Bale, 40¢ to 50¢

COWS—

Tested Dairy Cows, \$400 to \$600
Tested Beef Type Cows, \$300 to \$500

"Come and see our Expansion Program"

INVERNESS INN

Your Innkeepers: Matt and Marge
13996 North Territorial Rd. - North Lake

YOUR FAVORITE MEALS
SHRIMP, CHICKEN & FISH DINNERS

BEER - WINE - LIQUOR - PIZZAS
LUNCHEON SPECIALS

Established 1871 The Chelsea Standard Telephone 475-1371

Excellence Award By Michigan Press Association
1951-1952-1960-1964-1966-1968
Walter P. Leonard, Editor and Publisher

Published every Thursday morning at 300 North Main Street, Chelsea, Mich. 49118, and second class postage paid at Chelsea, Mich., under the Act of March 3, 1879.

Subscription Rates (Payable in Advance)

In Michigan	Outside Michigan:
One Year \$4.00	One Year \$6.00
Six Months \$2.25	Six Months \$3.50
Three Months \$1.15	Three Months \$1.75
Service men or women, anywhere, 1 year \$4.00	

National Advertising Representative:
MICHIGAN PUBLISHING, INC.
211 W. Michigan Ave.
Ann Arbor, Mich. 48106

MARSHALL TRUCKING

DRAW LINE - BACK HOE
SAND - GRAVEL - LIMESTONE
WASHED STONE

Immediate Service
FREE ESTIMATES

Call 424-9123, evenings 665-6521



Girl Drives Away Auto Given to Jaycee Rummage Sale

There seems to be a greater-than-at least more dramatic—demand for some items scheduled for the Jaycee Rummage Sale this year than in the past.

A 1962 turquoise Chevrolet Impala donated to the Jaycees for sale in their rummage auction scheduled for next month by Wilhelmina Zink, was stolen from Harper Sales & Service at 113 W. Middle last Tuesday night and ended up in Findlay, O., in the possession of Joyce Ann Cubberly, 13 of 142 Manchester Rd., and a 13-year-old boy. Reportedly they were bound for Florida when stopped by Ohio State Police.

Chelsea police officers had a brief encounter with the vehicle and its passengers earlier in the evening, when they pulled it over to investigate its commercial plates. Three citations were issued to Miss Cubberly but were not given to her as the officers had to leave the scene to respond to an emergency. A wrecker was called for the car, but the car and passengers had left the scene by the time it arrived.

Acting on a tip that reported that the pair had left for Florida, the car was placed on LEIN for the state of Michigan, as well as Ohio. At 4:15 a.m., Patrolman Foust of the Ohio State Police notified the Chelsea Police Department that the vehicle had been recovered in Findlay, O.

The 13-year-old was retrieved from Ohio by his father, Miss Cubberly

was picked up from the county jail by officers McDougall, Peeble, and matron Debbie Orlovski.

Miss Cubberly pled not guilty Monday in 14th District Court to unlawfully driving away an auto. Preliminary examination on the charge is set for Friday, May 24, at 9:30 a.m. She was released from custody on personal recognizance.

Wife Rescues Husband When Boat Flips

A Chelsea man who spent some two hours in waist-deep muck in Jurlig Lake in the Waterloo Recreation Area Sunday was saved from drowning by his quick-thinking and swimming wife, State Police report.

Mr. and Mrs. Charles Risner, 204 South St., were attempting to change seats in their 12-foot boat when the craft overturned, throwing both into the water and its mucky bottom.

Mrs. Risner managed to disengage herself and swam to shore, where she obtained another boat and a two-foot piece of wood and paddled back to where her husband held onto a life preserver.

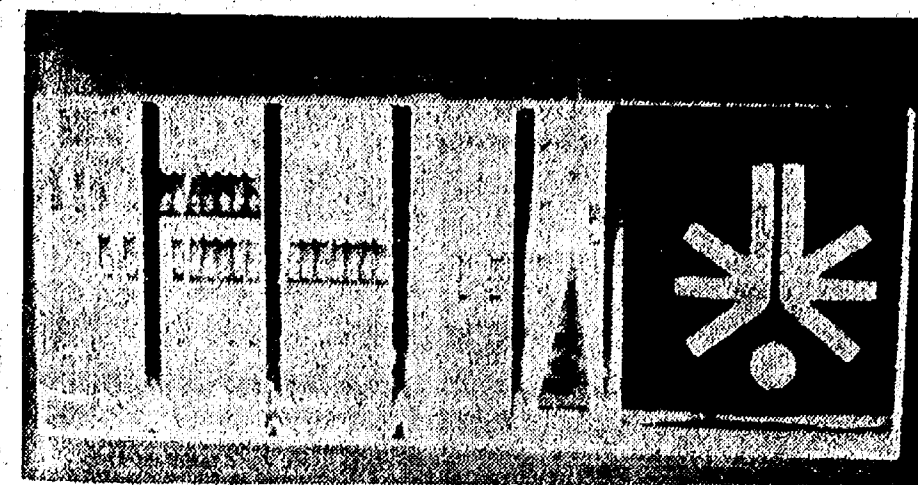
Troopers said Mrs. Risner held her husband's head above water until a rescue party from the shore arrived and pulled him to safety.

Risner was confined to Foote Hospital in Jackson for several hours for treatment for shock. Mrs. Risner said Tuesday, but has since been released. Mrs. Risner was not injured.

She noted that she "thanked God that my father and my brother threw me into the water when I was 10 years old and told me 'swim or drown.'"

YOU FIGURE IT!

A woman had a second-hand car for sale out in front of her home. The sign on the car read: "387.31." A prospective buyer asked, "Why do you have such an odd figure?" The woman was shocked an answered: "Because I eat between meals."



SPECIAL OLYMPICS RIBBONS: Overloaded with 83 ribbons won in the regional special olympics at Milan two weeks ago is this bulletin board at St. Louis school. A total of 15 of the boys qualified to compete in the state special olympics at Mt. Pleasant this week-end, and the rest of the boys will be transported by bus to Mt. Pleasant on Saturday to watch their fellow students.

Motor Vehicle Tax Receipts For March Show Increase

Gallons of taxed gasoline down, but income from gas and weight taxes up: that's the latest report from the State Highway Commission on January-through-March receipts of Michigan's Motor Vehicle Highway Fund in comparison with the same period of 1973.

Net receipts for the first three months of 1974 totaled \$169,849,674, an increase of 6.8 percent over the \$159,108,023 net in the same quarter of last year. All state gasoline and diesel fuel taxes, as well as license plate fees, go to the Motor Vehicle Highway fund.

Proceeds in the Motor Vehicle Fund are distributed at three levels of government after deductions of collection costs, the Waterways Commission's 1.25 percent share of gas taxes, and the General Transportation Fund's one-eighth share of the gas tax for public transportation. The formula provides for 44.5 percent to go to the Department of State Highways and Transportation, 35.7 percent to the state's 83 counties, and 19.8 percent to the 530 incorporated municipalities.

Washtenaw County's share of the proceeds was up to \$1,310,897 from \$1,136,368 in 1973. Chelsea's amount of that was \$21,202 (from \$20,199 in 1973) and Dexter's was \$10,422 (from \$10,178 in 1973).

David Evison Tops Competition In Chess Tournery

Winners in Chelsea Recreation Council's first chess tournament, completed last Tuesday, are David Evison in the senior division and Mark Barnes in junior division.

Second placers were Marlis Williams in senior division and Douglas Pichlik in junior division.

The tournament, under the direction of David Evison, consisted of four games played over a period of four consecutive Tuesdays.

Other participants in the competition were John Bailey, Fred Davis, James Hoffmeyer, Daniel Shirilla, James Van Sleete, Daniel Williams, Paul Hoffmeyer, Eric Pichlik, and Michael Ward.

Gun Stolen from Sheriff Deputy Recovered

A gun stolen from the Chelsea home of a Washtenaw County Sheriff's Department sergeant has been recovered by Wayne County sheriffs in the arrest of a pair of subjects near Wayne County General Hospital.

The gun, removed from the home of Sgt. Arthur Haapla, 263 Harrison St., on Dec. 24, 1973, has been listed on LEIN with the police department since its theft.

The arrested men have been charged with carrying a concealed weapon and possession of stolen property.

The Flag Goes By

Hats Off!

Along the street there comes a blare of bugles, a ruffle of drums,
A flash of colour beneath the sky; Hats off!
the flag is passing by!
Blue and crimson and white it shines
over the steel tipped ordered lines.

Hats Off!

The colours before us fly;
But more than the flag is passing by.
Sea fights and land fights, grim and great,
fought to make and save the state;
Wearied marchers and sinking ships;
cheers of victory on dying lips;
Days of plenty and years of peace;
March of a strong lands swift increase;
Equal justice, right and law,
stately honour and reverend awe;
Sign of a nation, great and strong,
To ward her people from foreign wrong;
Pride and glory and honor—all live the colours to
stand or fall

Hats Off!

Along the streets there comes a blare of bugles
a ruffle of drums;
And loyal hearts are beating high:

Hats Off!

The flag is passing by!

Band Booster Calendar

Buy your Band Calendar now!
If you've been missed use this coupon.

Name.....
Address.....
Number of calendars, \$1.00 each.....
List your dates, 25c each.....
Anniversary.....
Birthdays.....
TOTAL.....\$.....

Send check to Band Booster
c/o Phil Hume, 12 Hickory Dr., Chelsea, Mich. 48118

St. Louis School Notes

Fifteen boys from the school will compete in the Special Olympics this week-end at Mt. Pleasant, accompanied by Fr. Louis and Fr. Umberto. On Saturday, Fr. Germano and Fr. Fortunato will drive a bus of boys from the school to Mt. Pleasant to watch the competition.

Last Monday, the American Legion sponsored the boys' trip to a circus in Saline.

Sunday the Alhambra Club cooked dinner for all at the school and brought the Bird Lady and Indian

dancers with them. Alhambra Club provided all the prizes and entertainment for the boys.

JUST AN HOUR?

There was a drunk who walked up to a parking meter and inserted a coin, looked at the meter and exclaimed: "Well, whatta yuh know, I weigh one hour!"

SIGN IN A TAVERN:

If you are enjoying our color TV, you've had enough—this is a black and white set!

Golfers Second In Conference Final Standings

(Continued from page one)

Final conference standings are determined by a combination of dual meet records and placing in the conference meet.

Coach Pat Wade called the season "a successful year for this young team," and although admitting that his golfers were disappointed in their performance at the conference meet, said that the team "over-all, is quite proud of the season."

Full Line Supermarket

BEER - WINE - LIQUOR
AUTHORIZED
FOOD STAMP STORE
LOTTERY TICKETS
MARATHON GAS PUMPS
2-CYCO GAS PUMPS

Jiffy market

Big Enough To Serve You . . . Small Enough To Know You!

Open 7 Days A Week
7 a.m. to 10 p.m.
Open All Day Memorial Day

Sale Prices Effective
Thurs., May 23 thru Mon., May 27

TOP VALUE STAMPS - GUARANTEED SATISFACTION - COURTEOUS SERVICE

WAY BAKING CO.

KLEEN-MAID BREAD . . . 3 1 1/4-Lb. \$1
Loaves

WHAT CAN YOU BUY FOR 5c? ASSORTED

KOOL-AID . . . 5c 1 Pkg. 6.15
Makes 2 Qts. Pkg.

7-OZ. JAR MARIO'S

SPANISH OLIVES . . . 69c

KRAFT REG. LARGE 28-OZ. BOTTLE

BARBECUE SAUCE . . . 39c 1-Lb., 12-Oz. Bottle

KRAFT JETS

MARSHMALLOWS . . . 29c Full Pound

MAXWELL HOUSE, CHASE & SANBORN, HILLS BROS.

COFFEE . . . 98c 1-Lb. Can

CHEF'S DELIGHT

CHEESE SPREAD . . . 98c 2-Lb. Box

PRINGLE'S NEW FANGLED

POTATO CHIPS . . . 69c Twin Pak 2 9-Oz. Cons

LARGE, NEW CROP TEXAS

SPANISH ONIONS . . . lb. 10c

U. S. FANCY RED

DELICIOUS APPLES . . . lb. 29c

FREE TOP VALUE STAMPS

BASKART SPECIAL

BORDEN'S JUMBO TREAT

ICE CREAM

1 gallon **\$1.29**

FARMER PEET'S

HI-STILE HAM

Semi Boneless Skinless Whole **89c lb.**

Half - 95c lb.

BARBECUE TIME

YOUNG, LEAN, MEATY

SPARE RIBS lb. **89c**

CAMELOT SKINLESS

WIENERS 2 lbs. **\$1.49**

MEADOWDALE SLICED

BACON lb. **79c**

JIFFY HOT PRICE - HOME-MADE

SAUSAGE lb. **79c**

U. S. CHOICE

RIB STEAKS lb. **\$1.29**

U. S. CHOICE

CLUB STEAKS lb. **\$1.59**

U. S. CHOICE LEAN, MEATY

SHORT RIBS lb. **69c**

YOUNG, LEAN, MEATY

PORK STEAKS lb. **79c**

FREE TOP VALUE STAMPS

JIFFY MARKET MAKES A SWITCH

We are proud to announce
DETROIT PURE MILK CO.

Producers of
FARM MAID DAIRY PRODUCTS
is our new supplier

FARM MAID, "Michigan's Most Modern Dairy" is now serving Chelsea with all of its fresh, delicious, large variety of dairy products. JIFFY MARKET is happy and thrilled that we now have contracts with FARM MAID that will enable us to continue to serve the fresh dairy needs of Chelsea with Michigan's best, and still continue the sales programs that have helped all of you. Thank you!

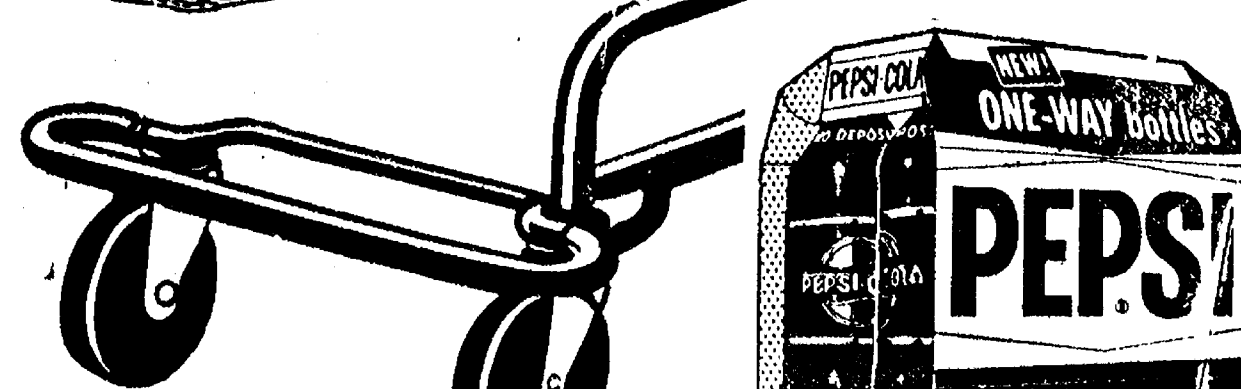
—Gene.



SWITCH SPECIALS
FARM MAID HOMOGENIZED

MILK
gal. **\$1.19**
FARM MAID

COTTAGE CHEESE
1-Lb. Crtn. **59c**



Memorial Day or Any Day
"Pepsi Has A Lot To Give"

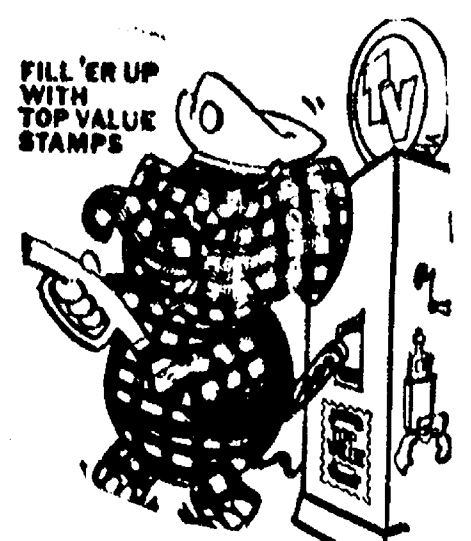
PEPSI COLA 8 Pack 10-Oz. Throwaway **89c**

JIFFY MARKET MARATHON GAS

**OPEN ALL DAY
MEMORIAL DAY**

REG. GAS **59.9** PREMIUM GAS **61.9**
Prices include all taxes.

FREE TOP VALUE STAMPS
OPEN 7 DAYS A WEEK
MORNING 7 a.m. to 10 p.m. NIGHT



Mich. State Lottery Tickets - Fresh Meats - Beer - Wine - Produce - Frozen Foods - Fresh Bakery Goods - Health and Beauty Aids - Groceries - Fresh Meats - Daily and Sunday Papers



TRUSTED CAMERA in hand, Don Turner and his familiar Dodge van prepare to depart for the great north country once again. Turner's journeys to Canada and Alaska have become something of history-in-the-making to readers of The Standard.

Don Turner Off Again to Alaska

Chelsea's wandering photographer-naturalist, Don Turner, is off once again into the wilds of the north country.

Turner, who claims that "my feet have been itching to get started ever since the geese went north," is aimed ultimately for Alaska, with a myriad of stops between to visit friends made in the past and attend Kiwanis meetings along the way.

Eight years ago, Turner spent his first summer in Alaska, joined for a few weeks by Ralph Guenther, for hunting and fishing in the back woods. Together, they bagged two sheep, a bear, and a wolf.

His first trip was such a success that two years later, Turner returned and again spent the summer in Alaska, visiting many of the places he had missed before.

In May of 1970, the wanderlust returned and Turner once again set off to visit favorite areas and explore some new ones.

Always his reports sent back to The Standard for "the folks back home," have teemed with the local color of an area that most of us have no chance of ever visiting beyond Don Turner's eyes—a picture of him holding a one-day-old antelope fawn while in Alaska is one such experience. Or there are the local history stories he garners while in old gold rush towns—like one about the source of Diamond Tooth Gertie's rather interesting name, as well as the type of employment in which she was engaged.

And, since maybe we can't quite visualize the wonders he writes about, he sends back photos to The Standard—and much later, after winters of editing and splicing, comes a Don Turner travelogue.

This journey's route, once again by Dodge van, will be via Sault Ste. Marie, up the Trans-Canada Highway to Banff and Jasper National Park.

"The fishing pole and reel are all oiled up and I am looking forward to doing some fishing in my favorite lake in Canada," Turner says. "I have written about Too Bally Lake in previous trips, where the moose, trumpeter swans, and loons are your only neighbors and the stillness of the wilds fills one's soul with peace. I will let you know how they are biting there."

Always one to seek new adventures, Turner says that he plans to "travel some new roads that have been built in the past two years, and see how the fishing is there."

His itinerary will include parts of Alaska and northern British Columbia, the Yukon, and, if "all goes well," he intends to visit relatives in California before returning some time in September. He hopes to include stops at Grand

Teton National Park in Wyoming and Yellowstone National Park.

In addition, Turner notes, he is taking along his gold pan and shovel and expects to do some prospecting along the way in remote areas.

"Who knows, maybe I will make a strike yet," he speculates. "But even if I don't, it's a lot of fun trying, so I'll keep everyone informed."

Craig Coltre Qualifies for State Meet

(Continued from page one)

Other Chelsea winners and placers were:

Shot put: 1st, Rex Miles, 44 ft. 2nd, Mark Smyth, 40 ft. 2 1/2 in.

High jump: 1st, Rick Sweeney, 5 ft., 10 in.; 2nd, Randy Sweeney, 5 ft., 10 in.; 3rd, Howard Salyer, 5 ft., 8 in.

Long jump: 1st, Howard Salyer, 17 ft. 8 1/2 in.; 3rd, Dennis Bauer, 17 ft. 2 1/2 in.

Pole vault: 1st, Randy Sweeney, 9 ft.

880 relay: 1st, Willow Run, 1:38.

880-yard run: 1st, Howard Salyer, 2:19.2; 2nd, Morris Johnson, 2:19.6.

120-yard high hurdles: 1st, Rick Sweeney, 17.8; 2nd, Jeff Marshall, 18.7.

1 mile run: 2nd, John Storey, 5:06.6; 3rd, Bill Rademacher, 5:14.9.

100-yard dash: 2nd, Craig Coltre, 10.73.

440-yard dash: 2nd, Dale Poertner, 56.8.

180-yard low hurdles: 1st, Howard Salyer, 22.2; 2nd, Jeff Marshall, 23.5; 3rd, Rick Sweeney, 23.8.

Two-mile run: 1st, Phil Frame, 10:55.4; 2nd, Rick Haller, 10:56.4; 3rd, David Frame, 11:40.

220-yard dash: 1st, Willow Run.

1 mile relay: 1st, Chelsea (Jerry Milliken, Skip Foytik, Eric Prinz, John Storey).

440-yard run: 1st, Willow Run.

Final home meet of the season is scheduled for this afternoon, Thursday, May 23, against Dexter at 3 p.m.—the early starting time due to a Dexter sports banquet scheduled tonight.

Conference meet action is on tap for next Wednesday, May 29, at South Lyon. Field events will begin at 3:30 p.m., running preliminaries at 4:45, and final running events at 7:30 p.m.

Several athletes in individual events and two relay teams have also qualified to run in the first annual Washtenaw County meet, to be held at 2 p.m. Saturday, May 25, starting at 2 p.m. at the Ypsilanti High school track, Radford Field.

This meet includes the eight fastest teams and distances in each event, and will find athletes from the Ann Arbor, and Ypsilanti Class A schools as well as all the outlying class B, C, D schools.



NORTH SCHOOL'S REPRESENTATIVES to the Young Authors Conference in Dexter last week were these four students, shown with their proud teachers. In front, from left, are Laura Hines, 4th grade, Chris Martin, 3rd grade, Cathy Doll, 3rd grade, and Karen Kiel, 4th grade. In back are teachers Mrs. Pietila, Mrs. Peet, Miss Sanders, and Mrs. Hafer.

Young Authors in Conference...

(Continued from page one)

who doesn't fit the category, Baby Dumbhead, all of whom display decidedly humanistic qualities—decidedly humanistic, except that they are emerging from the ground and flying over New York, while "people were screaming to death."

The crew digs a hole to China and the story ends—a bit prematurely to be sure, but the excitement factor is no doubt high for anyone familiar with King Kong or Godzilla movie afternoons.

Bill Merkel's reworking of the old-favorite tortoise and the hare fable in his "The Hare and the Turtle," is rampant with scandalous, unfair acts by the braggart hare, but nonetheless the sounder cruises unchallenged across the finish line, an hour ahead of the turtle.

His victory is only momentary, young Merkel immediately points out, with an apparently deep belief in justice: "The judges had something to say. The hare had lost the race for cheating so the turtle won the race."

Michelle Hellner, a student in Mrs. Huebner's class at South school, deals with one of the every-day delights of elementary school children, substitute teachers.

This particular substitute teacher turns out to be none other than Walt Disney's Jiminy Cricket, in the flesh, who proceeds to lead the apparently exhausted 4th graders through a debauched week of plays, singing, joke times, fun time, and other trivia, until Mrs. Huebner returns to teach "the usual stuff."

"A little Jiminy Cricket goes a long way," writes Michelle, a line that should restore some parents' confidence in their children's educational aspirations.

Karen Kiel's limerick creation entitled "End of a Dream" is not a somewhere-over-the-rain-bow world, but rather the basic stuff: a boy from Saline who doesn't realize the superior mettle of Chelsea residents:

There was a big boy from Saline
Who thought he could whip
Chelsea clean.
He gave it a try,
Got socked in the eye,
And that was the end of his dream.

Tanya Mattoff's "The Kitty Who Wanted To Sleep" begins on a note of James Joyce's once upon a time with the moo-cow classic, but involves a cat apparently unconcerned with the cares of the world. The cat informs dogs, cows, and its owner, that he "wants to sleep." Tanya seems convinced that the cares of the world, including dogs and owners, are not particularly pressing if fundamental pleasures like trees and sleep are on hand.

Ted Merkel, a 2nd grader at South school, spins an involved tale of a pair of hardy heroes, Bob and Bill Smith, who go for a camping trip in the mountains by themselves.

The two brothers encounter an amazingly extensive array of adventures with alligators, attacking bees, and waterfalls. To protect themselves, the pair employ scuba gear, guns, and walkie-talkies until a helicopter rescues them from their peril.

"Then Bob said 'I'm coming down' And he jumped down with his scuba gear and made a safe landing in the water. Then he saw Bob lying on the river bank.

He swam as fast as he could. Then he grabbed his walkie-talkie and radioed for help and in one day the helicopter came to pick them up."

Only Laura Hines' entry fails to deal with fantastic creatures, adventures, talking animals, or the like. Her poetry is more in the vein of writing that people create when no one else will see.

A short poem, "A Dime" seems a basic statement on Laura's values:

For a dime
You can buy a lime.
A lime is green like a lawn.
A lawn is like a fawn—
Warm and delicate.

"One of the children told us the conference was the biggest thing that had ever happened to him," noted Miss Donroe, the Bates 2nd grade teacher.

Maybe that wasn't the case with all the young authors, but it is certain they heard some enjoyable literature.

Girls Track Team

(Continued from page one)

Kathy Treado, Monica Hanna, and Sue Frieble. Time was :54.4.

Other Chelsea winners and placers were:

88-yard low hurdles: 1st, Monica Hanna; 2nd, Kathy Treado.

880-run: 1st, Judy Powers, 2:47.6; 3rd, Julie Proctor, 2:59.6.

100-yard dash: 1st, Sue Frieble, :12.3; 3rd, Annette Gaken, :12.8.

1 mile run: 2nd, Jan Downing, 6:45.4.

220-yard dash: 1st, Sue Frieble, :28.1; 3rd, Kathy Treado, :29.3.

440-yard run: 2nd, Lynne Roskowski, :59.8; 3rd, Judy Powers, :1:01.1.

440-yard relay: 1st, Chelsea (Annette Gaken, Kathy Treado, Monica Hanna, Sue Frieble), :34.4.

Shot put: 1st, Annette Gaken, 26 ft.

Long jump: 1st, Sandy Lingerfelt; 3rd, Colleen Collins.

High jump: 3rd, Kathy Treado.

Mobil-Toons

By GLENN

We never let our customers down!

GLENN'S MOBIL SERVICE

1629 M-52 & I-94
CHELSEA, MICHIGAN
Phone 475-1767
GLENN HEIM
PROP.

CHELSEA FINANCE CORP.

\$25 to \$1,500

For Any
Worthwhile Purpose

See or Call
FRANK HILL
at 475-8631

111 PARK STREET
CHELSEA, MICH.

CONSUMERS' CORNER

FANCY BED SHEETS

If the beds in your house are wearing striped or flowered sheets, they are in fashion.

For fancy sheets have become the big sellers in stores across the country.

On an industry-wide basis, fancy sheets account for about 60 percent of the total sales.

Solid colors are slipping, accounting for no more than 11 to 12 percent of total sales. But white sheets are still around—capturing about one-fourth of the total market.

Muslins have been gaining in sales at the expense of percales. Last year, percales accounted for 55 percent of all sheet sales; muslin had the other 45 percent.

This year the market will probably split 50-50 between muslin and percale.

Popular designs feature checks and plaids, as well as colorful floral prints.

Lacking visible symptoms, hearing problems often develop unnoticed over a long period of time, hearing specialists report. This, in part, accounts for health and government estimates that over 14 1/2 million Americans—including three million school age children—suffer from an undetected hearing loss, they add.

Telephone Your Club News
To 475-1371

Tennis Team...

(Continued from page one)

Hagen and Luick, Chelsea, first round bye.

Hagen and Luick, Chelsea, defeated Smith and Harrington, Marshall, 6-3, 6-2, second round.

Cooper and Loucks, Charlotte, defeated Hagen and Luick, 6-2, 4-6, 6-4, quarter finals.

Results from Tuesday afternoon's match with Leslie were: Debbie Bertke, Chelsea, defeated Jim Parker, 6-3, 6-4.

Jane Belser, Chelsea, defeated Don Haner, 6-1, 6-2.

Dan Hagen, Chelsea, defeated Gulce Bergmann, 6-3, 3-6, 6-0.

Duane Luick, Chelsea, defeated Mike Hamlin, 6-0, 6-0.

Umstead and Verchereau, Chelsea, defeated Lantz and Mulinix, 6-0, 6-0.

Lisa McCollum and Michelle McCollum, Chelsea, defeated Whitney and Weaver, 6-3, 6-4.

Feeny and Beaumont, Chelsea, defeated Sutton and Valentine, 7-6, 6-2.

CHS Senior Joins Ferris Band for Commencement

Chelsea High school senior Phyllis Jede, who plays trumpet in the high school band, was a participant in the 17th annual Honors Band Clinic at Ferris State College, in conjunction with the school's commencement exercises this past week-end.

Phyllis, who will enter Ferris next fall, was the only Chelsea High school band member chosen for this honor, which provides high school band members who will enroll at Ferris the opportunity to rehearse and perform in the school's concert band for the commencement exercises.

Guest conductor for the honors clinic was Leonard B. Smith, conductor of the Detroit Concert Band, a professional organization that presents six concerts each week during the summer months at Detroit's Belle Isle.

Phyllis is the daughter of Mr. and Mrs. Alvin Jede, 13175 North Territorial Rd., Gregory.

Because children learn and mature through verbal communication, it is vitally important to protect their God-given ability to hear. For this reason, winter earaches and ear infections must be provided the proper medical attention to prevent a permanent hearing complication, hearing specialists warn.

HAMILTON REFRIGERATION and AIR CONDITIONING SERVICE

COMMERCIAL SYSTEMS Installation and Repair

CALL
GARY HAMILTON
Manchester 428-7600
Evenings 428-8232

CALL OR STOP IN

CHELSEA GLASS WORKS

WORKMANSHIP AND MATERIALS FULLY GUARANTEED.
Open Daily 8 a.m. to 5 p.m.; Sat., 8 a.m. to 1 p.m.

140 W. Middle, Chelsea Phone (313) 475-8667

WE REPAIR AND REPLACE:

- ★ STORE FRONTS
- ★ FURNITURE TOPS
- ★ SHOWER DOORS
- ★ THERMOPANES
- ★ AUTO GLASS - Including Windshields

Free Pick-up and delivery on auto work.

Storm Door & Window Reglazing & Screens

COMMERCIAL BUILDINGS OR RESIDENTIAL

PROMPT SERVICE REASONABLE PRICES

Wayne

THE ALL-PRO DOG FOOD

People who know... breeders, trainers, kennel owners... the Pro's who are trained and experienced in dog care choose and recommend Wayne Dog Food.

Why? Because they know Wayne's is a nutritionally balanced dry dog food that helps build and maintain strong, healthy dogs. A total meal in itself, it contains all known nutrients necessary for complete dog nutrition. Ask for the professionals' choice... Wayne Dog Food.

Now Available — Ground Corn Cobs

McCalla Feed Service

PHONE 475-8153

12875 OLD US-12 CHELSEA

Also from Wayne
Ask us about Wayne's complete canned dog food line. A nutritious and convenient daily ration.

Simplicity Wonder Boy.

Wonder priced!

Two tough performers to choose from. The big 8 hp. Wonder Boy with semi-automatic transmission mows 30" at a pass. The economical 5 hp. version has 2-speed gearbox, and 26" rotary mower. Free-floating mowers follow ground contours, avoid scalping. Both come with optional electric start and 5 bushel collection hopper. Team with carts for year 'round hauling. Wonder Boy. The Simplicity System for yards that are mostly lawn.

Father Nature's right-hand man.

PLUS! \$79.95 Grass Catcher FREE!

Chelsea Hardware

110 S. Main St. Phone 475-1121

AFTER SCHOOL

"Mom, I'm hungry!" When you hear those familiar words, delicious milk is the best answer. It's a satisfying, healthful treat, and the youngsters love it. Be sure to keep plenty of milk on hand.

HICKORY RIDGE FARM DAIRY

Stockbridge, Mich.
Phone (517) 851-3000

Are you gambling with your family's security?

Suppose you were sued for \$500,000... and lost! Would you be able to stay out of bankruptcy? And what would happen to your family security? Suits involving hundreds of thousands of dollars are all too frequently started against businessmen and professionals simply because they are well-known as affluent and successful people! Here's an economical way to avoid such a risk! Our Executive Liability Insurance provides up to \$5,000,000 of protection for you and your family. Call us now. We can probably put all your liability insurance together and even save you some money.

it's better altogether

A. D. MAYER AGENCY, INC.

115 PARK ST., CHELSEA
BOB BARLOW, AGENT
PHONE 475-2030

Auto-Owners Insurance

Lifelong Car Business



NORTH ELEMENTARY SCHOOL NOTES

KINDERGARTEN—

Everyone reports Teacher: Mrs. Michelson
The Senior Citizens had lots of cookies and Kool-Aid for all of the kindergarten children when they sang there last week. Mrs. Dye was there too. We had a wonderful time. Mr. Wehrwein helped us across the railroad tracks when we walked to town. We rode back on the bus, and Ralph Brier helped us sing "The People on the Bus." It was fun.

The art show was beautiful. Did you see our fish kites made out of old newspaper? Then there were big panels of our other papers—one orange and green one right by the door. Mrs. Coulam, the art teacher, said we could send our work too. "She really worked hard," said one of our six-year-olds.

Isn't it more fun to learn letters if you think of G for gum, and C for candy and I for ice cream? We think so. S can be for "some-mores" which we baked the other day.

Our mothers are the best. They help us whenever we need them—they bake, they come to school, they do a lot of calling.

After Memorial Day vacation on Monday, May 27, we are going to visit Inbody's farm—all of us. Do you know what? We are going for a train ride before our picnic. Monday, June 3 the morning children will go and Tuesday, June 4 the afternoon children will go. Mrs. Hawks, Mrs. Porath, Mrs. Schaffner and Mrs. Mull are getting everything ready for all the activities going on. If we had to make a list of all the mothers who are helping, it would be too long. We, the children and Mrs. Michelson thank you for a good year. Have a happy day!

P.S.—Don't forget our Pet Shows on the 28, 29 and 31st of May.

FIRST GRADE—

Teachers: Mrs. Packard, Mrs. Peebles, and Mrs. Stein.
Our May birthdays are: Calvin Carlson, Christine Hegadorn, Sol Merkel, Brett Knickerbocker, Shane Brown, Michelle Romine, Debbie Burton, Jeff Chandler, and Beth Fahey.

Summer birthdays are: Michael Ball, Gayla Bauer, John Duhamel, Michael Broshan, Joanne Brown, Allison Hepburn, LeAnn Carpenter, Sarah Weik, Peter Hanna, Julianne Pratt, Bonnie Bentley, Liz Kincer, Joe McDougall, Lorri Paxton, and Colleen Stubbs.

Our school breakfast was a great success if judged by the amount of food the children ate that morning. We hope they remember some of the values of what makes a good breakfast and why we need breakfast.

We were pleased to see so many families at our program. Mrs. Dye has the children twice a week for music this year, and you could see how the children benefited. It meant a great deal to the children to have so many people come.

The children made their musical instruments and program covers during art class with Mrs. Coulam. She also made our May Pole.

The First Grade Field Day will be held the last day of school, June 5.

We are planning a walk to McKune Library the last week of school. We will be sending home information on using the library this summer.

Have you tried making and eating turtles yet? The children enjoyed making these for our program. Aren't they delicious?

SECOND GRADE—

Teacher: Mrs. Walton
Summer vacation is so near that it is hard to keep from counting the days. We do have some important work ahead of us though. We will be taking tests and finishing books.

We are also planning our trip to the Waterloo Farm Museum. We have been hearing stories about the colonial life and how they made

their own soap, candles, furniture etc.

Our field day and picnic are going to be our send-off into summer.

We also have three more birthday days to celebrate before school is out. Scott Cheever, Hallie Schmidt and Scott Richardson will all be eight years old.

Have a happy summer.

Memorial Day Parade Closes Out Band Year

As band members go into "retirement" with the end of the school year following the Memorial Day parade the work is just beginning for a few hard-working band mothers.

On Tuesday, Wednesday, and Thursday mornings, May 28, 29, and 30, band members are asked to return their band uniforms. Since "dis-assembling" all those band uniforms and crediting their return to the students is a chore in itself, band directors have asked that each student, prior to returning his uniform, do the following:

- remove citation cords.
- remove plume from hat.
- remove buckles from belt.
- launder belt and snap-in collar lining.
- clean spats.

In other band-related news, band members are reminded that band camp applications and fees are to be handed in Wednesday, May 29, and Thursday, May 30. Band calendar order forms and money should also be turned in promptly.

Assembly for the Memorial Day parade for junior and senior high band members is scheduled for 9:30 a.m. at the municipal parking lot. Senior band members should wear white shorts, white shirt, band uniform overlay, white socks, and shoes. Junior high school band members are to wear white shirt and dark shorts.

Thomson Brothers Help Kalamazoo To Another Title

Among Kalamazoo College tennis players winning singles championships in Michigan Intercollegiate Athletic Association play were three brothers, Steve, Mike, and Mark Thomson, formerly of Chelsea.

They are the sons of Mr. and Mrs. John R. Thomson of 1318 Three Mile Rd., Grosse Pointe.

Steve Thomson was also chosen a member of this year's all-conference squad.

Kalamazoo captured its 36th consecutive MIAA tennis championship, earning first places in eight of nine events during last weekend's action at Calvin College.



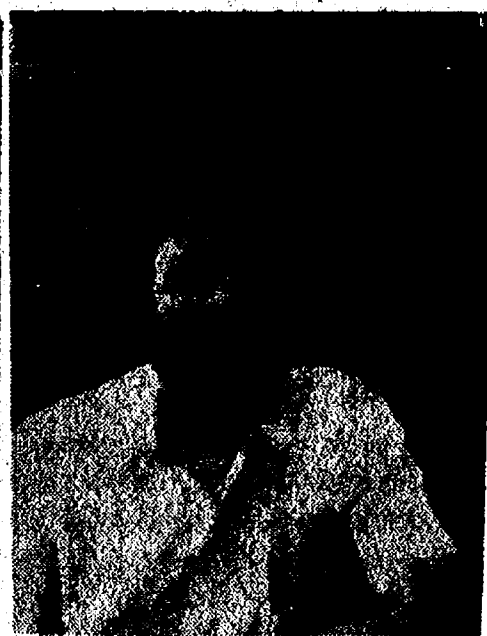
CUB SCOUT NEWS

PACK 435, DEN, 15—

At our May 8 meeting, Den 15 of Pack 435 met at Tom Spencer's house after school. We made notes about safety from alphabet macaroni. At our May 15 meeting, we went for a long walk and looked for wild things we could eat. We found some wild onions. Wayne Smith, scribe.

GOOD GUYS WIN?

From watching television, one can easily worry. The good guys win on every program except the evening news!



THOMAS S. ROBERTS

Area Resident Seeks County Cmsr. Post

Thomas S. Roberts, 11485 Pleasant Shore Dr., Manchester, has announced his candidacy for the Republican nomination for District 2 county commissioner. District 2 includes Dexter, Freedom, Lima, Lyndon, Manchester, Sylvan and Sharon townships.

Formerly director, Programs Division, of the University of Michigan's Bureau of Industrial Relations, he is now president of Mastertec Press which publishes and distributes books nationally. He is also active as a management consultant specializing in assisting smaller businesses. Roberts holds a BS degree from Syracuse University and a Master of Business Administration from Michigan. A member of the American Society for Training & Development, he serves on its National Exhibitor's committee.

Long active in area politics, Roberts formerly served on the County Republican Committee, sits on its issues committee and has been elected Republican delegate from Freedom Township for a number of years.

Youth Pleads Guilty to Charge of Furnishing Liquor

An 18-year-old Dexter youth who purchased four pints of orange-flavored vodka for himself and three companions has been fined \$50 and placed on six months probation for furnishing alcohol to minors.

Pleading guilty Monday in 14th District Court in the case was Mark Watton, 1280 Lima Center Rd., Dexter. A 17-year-old Chelsea girl who passed out after drinking with Watton and two other companions and had to be revived at Chelsea Medical Center signed a warrant against him. The other girl in the group, an 18-year-old, also testified against Watton.

According to Chelsea High school assistant principal Richard Lapanowski, the unconscious girl was brought into the school at 2:30 p.m., Thursday, May 9, in "an acute state of intoxication."

After transporting her to the medical center, police officers learned that she and the other girls, and Watton and another minor boy had decided to "skip school and go drinking." Watton purchased two pints of orange flavored vodka; then later returned for two more, which were consumed at Green Lake Campground.

School Board Briefs

(Continued from page one)

It was decided to set the operational millage request for the June 10 election at 13.5 mills for two years, 1974 and 1975, and to place the following names on the ballot or election to the school board: Robert L. Daniels and Thomas R. Hodgson and for the one-year term, Eino S. Michelson and Martin H. Tobin.

Appointed election inspectors were: Frances Manzel, Ethel Halst, Loren Wenk, Dorothy Koengeter, Mary Ann Coltre, Marjorie Plumb, Virginia Visel, Irene Claire, and Cecile Bernath.

President Haselschwardt called a special Board of Education meeting for Monday, June 10 at 8:45 p.m. in the instructional material center of Beach Middle school to certify the results of the election and take up any other business that comes before the board.

The board decided that all past members of the Board of Education with children in the graduating class be invited to present the diplomas to their children.

Principal Lane discussed the 1974-75 agriculture program with the board. Principal Lane reported that the interviews of prospective candidates for the agriculture teaching position will begin this week.

The meeting was adjourned at 11:55 p.m.

Present at the special Board of Education meeting of the Chelsea School District on May 15 were Trustees Schafer, Stirling, Hodgson, Daniels, Koenn, and Irwin, Superintendent Cameron, Business Manager Mills, and Principals Lane, Conklin, Wojcik, and Benedict.

In the absence of President Haselschwardt, secretary Schafer took over as temporary president.

Meeting was called to order by Secretary Schafer at 9 p.m.

The board certified the results of the May 15 operational millage election as: 476 yes; 695 no; and 12 spoiled ballots.

The board unanimously accepted the petitions of the Board of Education candidates for the June 10 annual election, as certified by Secretary Schafer: for the two four-year terms, Robert L. Daniels and Thomas R. Hodgson, and for the one one-year term, Eino S. Michelson and Martin H. Tobin.

The board unanimously decided to pay the fees of \$60 for the Special Education Olympics qualifiers.

Howard Haselschwardt, Donald Irwin, and Herman Koenn will award the diplomas at graduation.

The board unanimously supported a motion to place a millage issue proposal on the ballot on June 10. An extended discussion of the alternatives of the board, in light of the second operational millage defeat, was held. The board decided that because of the financial conditions of the school district, the number of teachers and administrators for the 1974-75 school year should be reduced; and therefore notices of termination will be immediately issued to all teaching and administrative personnel, to become effective with the termination of their 1973-74 contracts.

The board instructed Business Manager Fred Mills to freeze all spending of 1974-75 fiscal funds other than necessary emergency maintenance and operational expenses. Until a 1974-75 operational millage is approved, the Business Manager is to submit individual expenditure requests to the board for approval.

The board set the annual election on June 10, with polls in the large group instruction room of Dwight E. Beach school. Polls will be open from 7 a.m. to 8 p.m. Serving as election inspectors will be Frances Manzel, Ethel Halst, Lorena Wenk, Dorothy Koengeter, Mary Ann Coltre, Marjorie Plumb, Virginia Visel, Irene Claire, and Cecile Bernath.

The meeting was adjourned at 11:30 p.m.

Queen Kick-off Meeting Set For Tuesday

Queen kick-off at last is the good news for women of the Dexter area.

Bruce Waggoner, general chairman of the Dexter Area Sesquicentennial Committee, has announced that the queen's kick-off meeting will be held Tuesday, May 28 at 8 p.m. at the all-purpose room of Dexter High school.

At that time, rules for the contest will be presented and the contest will officially begin. The winner will be crowned at the Coronation Ball on opening night of the celebration, June 22, and she will reign the entire week of the celebration.

Gifts and prizes for the queen and her court will be on display at Sesquicentennial Headquarters.

SUN'S ENERGY

Each second, the sun converts 564 million tons of hydrogen into 560 million tons of helium; the remaining four million tons eventually radiate away as heat and light.

REWARD

\$50 reward for information regarding Frank Lee Mueller, formerly of Wisner St., Ypsilanti.

CALL MOON BAIL BONDING CO.
ANN ARBOR 668-7107

Holloway Competent To Stand Trial

Roy F. Holloway, a Dexter man currently accused of armed robbery and assault with intent to murder in last December's shoot-out with Dexter Police officer Hugh Vaughn, has been declared mentally competent to stand trial in Circuit Court.

Judge Edward D. Deake declared Holloway competent based on a report from the Center for Forensic Psychiatry at Ypsilanti State Hospital, where Holloway has been undergoing treatment since February, when Deake declared him incompetent to stand trial.

Holloway, 20, has been remanded to Washtenaw County Jail under a \$100,000 bond and is scheduled for a pre-trial hearing May 30.

The charges stem from an attempt by Officer Vaughn to question Holloway and his 16-year-old companion about a bar fight in the morning of Dec. 4. After disarming Vaughn, the pair began to force him into his patrol car in an apparent abduction attempt. Vaughn, however, pulled a pistol from his pocket and began to shoot, striking Holloway's leg.

The pair escaped in the patrol car, which was later recovered. Holloway surrendered to his probation officer some 12 hours after the incident. He was then on probation for breaking and entering.

CAN'T DROWN?

Despite legends that you can't drown in the Okefenokee Swamp because an alligator will swallow you first, a gator actually will more likely turn tail and run than attack a human.

DNR Public Hearing Stated May 30

A public hearing will be held May 30 by the Department of Natural Resources to present proposed rules for the control of watercraft on the Huron River, Dexter and Webster townships.



BOB MYRREL
Assistant Manager
EVE. 475-1449

To divide land you should know

- ★ THE MICHIGAN PLAT ACT
- ★ THE LAND SALES ACT
- ★ TOWNSHIP REGULATIONS
- ★ COSTS INVOLVED
- ★ MARKET VALUE OF THE PARCELS

Call me personally . . . I can help.

Real Estate Div.
OF WASHTENAW
REALTORS

1196 M-52, Chelsea 475-8493

EXPERT BODY SHOP

INSURANCE WORK - CUSTOMIZING
FIBREGLASS REPAIR

All Work Guaranteed - Free Pick-up & Delivery

CALL DANNY ALLEN FOR FREE ESTIMATE

FRANK GROHS CHEVROLET

Phone 426-4677

Dexter

COMPLETE HOME REMODELING

FREE ESTIMATES

DORMERS

ALUMINUM SIDING
EAVESTROUGHS
ADDITIONAL
AWNINGS



ROOFING
KITCHENS
REC ROOMS
GARAGES

CAMELOT CONSTRUCTION

475-9209
14034 N. Territorial

DEXTER FOOD LOCKER

PAUL DUNBAR, OWNER

8083 MAIN ST., DEXTER

PHONE 426-8466

**FILL YOUR FREEZER NOW
WE HAVE SIDES - HINDS - FRONT
BEEF FRONT QUARTER . . . 63¢ lb.**

WE SELL IN SMALL QUANTITIES, TOO . . .

Bologna	79c lb.	Pork Chops	98c lb.
Hot Dogs	79c lb.	Bulk Hamburger	89c lb.
Slab Bacon	79c lb.	Hamburger Patties	98c lb.

(Above in 10 lb. lots only)

Single Steaks and Roasts Also Available

CUSTOM SLAUGHTERING & PROCESSING

EXTRA GAS!

Custom installed fuel tanks for all makes of pickups, vans and motor homes.

26 to 50 gal. additional fuel tanks installed from \$155.

CALL FOR APPOINTMENT

475-1347

LLOYD BRIDGES TRAVELAND

M-52 and I-94 - Chelsea

\$1000 OR MORE

This is an outstanding investment/savings opportunity. It is the highest savings and loan interest paid in Michigan. Interest is paid and compounded quarterly giving an effective annual rate of 7.71% when left on deposit to maturity. AND your investment is insured to \$20,000 with the Federal Savings and Loan Insurance Corporation. . . Safety coupled with a high return. A hard combination to beat in today's investment market.

You can open a Passbook Savings Certificate account in amounts of \$1000 or more, minimum term 60 months at any AAFS office in Washtenaw County.

OTHER HIGH INTEREST PAYING SAVINGS PLANS	
7%	PASSBOOK CERTIFICATE ACCOUNT... minimum \$1000 or more for 48 months. Effective annual rate 7.19%.
6 3/4%	PASSBOOK CERTIFICATE ACCOUNT... minimum \$1000 or more for 30 months. Effective annual rate 6.92%.
6 1/2%	PASSBOOK CERTIFICATE ACCOUNT... minimum \$1000 or more for 12 months. Effective annual rate 6.66%.
5 1/4%	PASSBOOK SAVINGS ACCOUNT... daily interest paid from date of deposit to date of withdrawal. Effective annual rate 6.35%. No minimum deposit.
PER ANNUM	

Federal Regulations require a substantial interest penalty for withdrawals from certificate savings accounts.

ANN ARBOR FEDERAL SAVINGS

ANN ARBOR OFFICES: Downtown, Liberty at Division; Westside, Parkway at Stadium; Easdale, Huron Parkway at Platt; Northside, Plymouth at Niles
CHELSEA—Main Street near Old U.S. 12; DEXTER—801 Main Street; YPSILANTI—Huron at Packard; MANCHESTER—111 East Main Street
Member: Federal Home Loan Bank System • Federal Savings and Loan Insurance Corporation



Mr. and Mrs. Boyd L. Pitts

Faber - Pitts Vows Spoken Saturday

Kathy E. Faber became the bride of Boyd L. Pitts Saturday, May 18, in a ceremony at Chelsea Baptist church conducted by the Rev. James A. Stacey.

The bride is the daughter of Mr. and Mrs. Arthur W. Faber of Chelsea; the bridegroom is the son of Edna Hiller and the late Ted Pitts of Fenton.

Honor attendants were Mrs. Eddie Parsons, a niece of the bride, of Grayson, Ky., and Patrick Miliken of Chelsea.

Acting as a bridesmaid was Miss Debora L. Steinaway, of Chelsea, a niece of the bride.

Acting as ushers were Waldo B. Steinaway, III, of Chelsea, a nephew of the bride, and Charles Miller, of Jackson, a nephew of the bride.

A reception followed the ceremony at UAW Hall in Chelsea. The couple are now at home in Hamburg after a wedding trip to Mackinac City and Mackinac Island.

Area Riders Score Well in First Point Show of Season

Chelsea area riders earned a number of ribbons at the first Michigan Hunter-Jumper Association point show of the season, held May 11 and 12 at Union Lake.

Kate Donkin earned a first in novice equitation on the flat, a third in equitation, 14 and under category, and a fourth in novice equitation over fences. Riding Bittersweet, she earned a fourth place in junior working hunter under saddle, 15' 2" and under Riding Dakari, she took fourth in junior working hunter under saddle, over 15' 2".

Mrs. Thomas Donkin on Dakari took a third place in amateur hunter under saddle.

Mrs. S. J. Behrman and her mount, Silent Majority, placed first in amateur hunter under saddle, and fifth in green hunter under saddle.

Andrea Behrman, on Paper Moon, earned a pair of thirds, in warm up, over 15' 2", and junior working hunter, over 15' 2", and a sixth in MHJA medal.

Penny Bartlett, riding War Dance, recorded a third in B-level jumper.

Scott Alder, riding Bacardi, placed first in regular working hunter, and earned two sixth places in junior equitation, 14 and under category, and junior working hunter, over 15' 2".

Kim Alder earned a second place in junior equitation, 15 to 17 category. Riding Me Three, owned by Mrs. Claire Mathes, she placed third in first year green working hunter. Riding Altanga, owned by Mrs. Wendie Bowie, she took second in second year green working hunter.

Next show of the season will be held at Waterloo Hunt Club this week-end, Saturday, May 25, and Sunday, May 26. A spring show is scheduled for Stoney Ridge Farm June 1 and 2.

Chelsea cruised into a league championship in girls softball action Tuesday afternoon, defeating Dexter, 12-6, to finish an undefeated season.

Leading the triumphant local squad to victory were Loraine Clark who was good for three hits in the contest, and Brenda Salyer, who provided two. Salyer also pitched a complete game for the win. Alice Juergens, hard-working catcher for the squad, completed the winning battery.

Coach Ann Schaffner rated the game "one of our best-played games" as the team committed only four errors.

"I'm really proud of this team, since this is their first season," Coach Schaffner noted in excitement after the game. "We have a really young team—we started four freshmen and a sophomore this year—and we have a lot to look forward to."

Chelsea winners and placers included the 880 relay team, which placed first with a time of 1:56.8. Team members are Angie Merkel, Penny Collinsworth, Shelley Warren, and Carolyn Schardain.

Shuttle hurdle relay team placed fourth and the 440 relay team, fifth.

Only five events were offered for girls. Highlighting the boys team's performance was Beach's time of 9:24.5 in the second Tecumseh distance relay, which broke the meet record. Team members are Chris Smyth, Pat Stevenson, Todd Weber, and David Dawson.

Beach also earned a second place in the shot put relay, with a combined distance of 85 ft.

Meat left over from a baked ham dinner can be converted into an economical yet distinguished dish that merits a place on the company luncheon table. Ham a la King is a pleasing example. Simply add cubes of cooked ham, canned mushrooms (stems and pieces), chopped pimiento, sliced ripe olives and chopped hard cooked egg to a medium white sauce and heat through. Serve the mixture on toast triangles. It's a smooth and easy recipe that will delight guests. Makes fine family fare too!

Beach also earned a second place in the shot put relay, with a combined distance of 85 ft.

Only five events were offered for girls. Highlighting the boys team's performance was Beach's time of 9:24.5 in the second Tecumseh distance relay, which broke the meet record. Team members are Chris Smyth, Pat Stevenson, Todd Weber, and David Dawson.

Beach also earned a second place in the shot put relay, with a combined distance of 85 ft.

Only five events were offered for girls. Highlighting the boys team's performance was Beach's time of 9:24.5 in the second Tecumseh distance relay, which broke the meet record. Team members are Chris Smyth, Pat Stevenson, Todd Weber, and David Dawson.

Beach also earned a second place in the shot put relay, with a combined distance of 85 ft.

Only five events were offered for girls. Highlighting the boys team's performance was Beach's time of 9:24.5 in the second Tecumseh distance relay, which broke the meet record. Team members are Chris Smyth, Pat Stevenson, Todd Weber, and David Dawson.

Beach also earned a second place in the shot put relay, with a combined distance of 85 ft.

Only five events were offered for girls. Highlighting the boys team's performance was Beach's time of 9:24.5 in the second Tecumseh distance relay, which broke the meet record. Team members are Chris Smyth, Pat Stevenson, Todd Weber, and David Dawson.

Beach also earned a second place in the shot put relay, with a combined distance of 85 ft.

Only five events were offered for girls. Highlighting the boys team's performance was Beach's time of 9:24.5 in the second Tecumseh distance relay, which broke the meet record. Team members are Chris Smyth, Pat Stevenson, Todd Weber, and David Dawson.

Beach also earned a second place in the shot put relay, with a combined distance of 85 ft.

Only five events were offered for girls. Highlighting the boys team's performance was Beach's time of 9:24.5 in the second Tecumseh distance relay, which broke the meet record. Team members are Chris Smyth, Pat Stevenson, Todd Weber, and David Dawson.

Beach also earned a second place in the shot put relay, with a combined distance of 85 ft.

Only five events were offered for girls. Highlighting the boys team's performance was Beach's time of 9:24.5 in the second Tecumseh distance relay, which broke the meet record. Team members are Chris Smyth, Pat Stevenson, Todd Weber, and David Dawson.

Beach also earned a second place in the shot put relay, with a combined distance of 85 ft.

Only five events were offered for girls. Highlighting the boys team's performance was Beach's time of 9:24.5 in the second Tecumseh distance relay, which broke the meet record. Team members are Chris Smyth, Pat Stevenson, Todd Weber, and David Dawson.

Beach also earned a second place in the shot put relay, with a combined distance of 85 ft.

Beach Track Team Finally Loses Contest

Beach Middle school's track squad fell to Pinckney last week, 70-53, their first defeat in recent memory. Highlighting the meet, however, was a winning performance by the 880 relay team, which recorded a time of 1:48.6, its best of the year.

Other winners and places in the meet were:

Shot put: 1st, Leon Brown, 43 ft., 11 in.; 2nd, Tim Welshans, 43 ft., 7 in.

High jump: 3rd, Randy Harris, 4 ft., 8 in.

880 relay: 1st, Beach (Brian Lewis, Randy Harris, Pat Stevenson, Chris Smyth), 1:48.6.

880 run: 2nd, Todd Weber, 2:16.5.

60-yard high hurdles: 2nd, Matt Fisher, :09.7; 4th, John Daniels, :09.9 (his best time of the year).

100-yard dash: 2nd, Scott Stafford, :11.2.

440-yard-dash: 1st, Chris Smyth, :02.2.

100-yard low hurdles: 2nd, Matt Fisher, :13.6; 3rd, Greg Reed, :13.4.

60-yard dash: 1st, Brian Lewis, :07.5; 3rd, tie, Angie Merkel and Leon Brown, :07.8.

75-yard dash: 2nd, Scott Stafford, :08.9; 3rd, Tim Welshans, :09.2.

220-yard dash: 3rd, Pat Stevenson, :28.1.

1 mile relay: 1st, Beach (Scott Beyer, David Smith, Steve Pennington, David Dawson), 4:15.

In the Tecumseh Relays, which took place two weeks ago, Beach's boys team placed fifth in a field of 12, while girls stood third.

Leading the placing for the girls squad was Ida, with 36 points, followed by Blissfield with 27, and Chelsea and Saline, tied for third with 18 points.

Chelsea winners and placers included the 880 relay team, which placed first with a time of 1:56.8. Team members are Angie Merkel, Penny Collinsworth, Shelley Warren, and Carolyn Schardain.

Shuttle hurdle relay team placed fourth and the 440 relay team, fifth.

Only five events were offered for girls.

Highlighting the boys team's performance was Beach's time of 9:24.5 in the second Tecumseh distance relay, which broke the meet record. Team members are Chris Smyth, Pat Stevenson, Todd Weber, and David Dawson.

Beach also earned a second place in the shot put relay, with a combined distance of 85 ft.

Only five events were offered for girls.

Highlighting the boys team's performance was Beach's time of 9:24.5 in the second Tecumseh distance relay, which broke the meet record. Team members are Chris Smyth, Pat Stevenson, Todd Weber, and David Dawson.

Beach also earned a second place in the shot put relay, with a combined distance of 85 ft.

Only five events were offered for girls.

Highlighting the boys team's performance was Beach's time of 9:24.5 in the second Tecumseh distance relay, which broke the meet record. Team members are Chris Smyth, Pat Stevenson, Todd Weber, and David Dawson.

Beach also earned a second place in the shot put relay, with a combined distance of 85 ft.

Only five events were offered for girls.

Highlighting the boys team's performance was Beach's time of 9:24.5 in the second Tecumseh distance relay, which broke the meet record. Team members are Chris Smyth, Pat Stevenson, Todd Weber, and David Dawson.

Beach also earned a second place in the shot put relay, with a combined distance of 85 ft.

Only five events were offered for girls.

Highlighting the boys team's performance was Beach's time of 9:24.5 in the second Tecumseh distance relay, which broke the meet record. Team members are Chris Smyth, Pat Stevenson, Todd Weber, and David Dawson.

Beach also earned a second place in the shot put relay, with a combined distance of 85 ft.

Only five events were offered for girls.

Highlighting the boys team's performance was Beach's time of 9:24.5 in the second Tecumseh distance relay, which broke the meet record. Team members are Chris Smyth, Pat Stevenson, Todd Weber, and David Dawson.

Beach also earned a second place in the shot put relay, with a combined distance of 85 ft.

Only five events were offered for girls.

Highlighting the boys team's performance was Beach's time of 9:24.5 in the second Tecumseh distance relay, which broke the meet record. Team members are Chris Smyth, Pat Stevenson, Todd Weber, and David Dawson.

Beach also earned a second place in the shot put relay, with a combined distance of 85 ft.

Only five events were offered for girls.

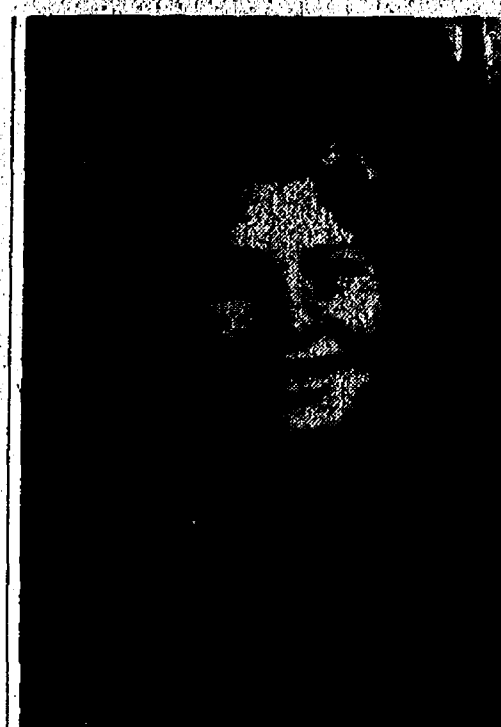
Highlighting the boys team's performance was Beach's time of 9:24.5 in the second Tecumseh distance relay, which broke the meet record. Team members are Chris Smyth, Pat Stevenson, Todd Weber, and David Dawson.

Beach also earned a second place in the shot put relay, with a combined distance of 85 ft.

Only five events were offered for girls.

Highlighting the boys team's performance was Beach's time of 9:24.5 in the second Tecumseh distance relay, which broke the meet record. Team members are Chris Smyth, Pat Stevenson, Todd Weber, and David Dawson.

Beach also earned a second place in the shot put relay, with a combined distance of 85 ft.



CAROL SPENCER



DEBRA ANN ROSSBACH

Carol Spencer Chosen for Girls State Session in June

Chelsea High school junior Carol Marie Spencer has been selected this year's representative to the annual Girls State session by Herbert J. McKune Post No. 31, American Legion Auxiliary.

Carol, a member of the Chelsea chapter of the National Honor Society, has taken an active part in school fund-raising projects and enjoys all forms of sports, both as a spectator and as a participant, but swimming and sailing rank as favorites. She plays viola and hopes eventually to enter the field of medicine. She is a member of the First United Methodist church. She is the daughter of Dr. and Mrs. Herbert H. Spencer.

Scheduled for Olivet College in Olivet, June 16 through 23, the 34th annual American Legion Auxiliary Girls State includes seven full days devoted to government, education, recreation, and enjoyment.

Girls State members will play the roles of junior politicians and build a unit of government, electing from their own representatives city, county and state officials for a model state. Each participant will be assigned to a city, petition for offices, form party platforms and caucus her way through a whirlwind seven days of self-government.

At the close of the session, two girls will be selected to represent Michigan at Girls Nation, held in Washington, D.C.

Girls State is designed to provide citizenship training for girls of high school age, to give them an opportunity to live together as self-governing citizens; to inform them about the duties, privileges, rights and responsibilities of American citizenship; and to help them grasp the meaning of some of the responsibilities which they must assume when they become adults.

Established by the American Legion Auxiliary in 1941, Girls State participants are generally selected from a list obtained from high schools of eligible girls in their junior year. Selection is based on each individual's character and potential abilities, rather than on a single achievement such as excellence in scholarship or any other specific field.

Alternate delegate to Girls State is Debra Ann Rossbach. A member of the National Honor Society and the Junior Trip Club, she is proficient at painting and enjoys hobbies including biking, tennis, swimming, and cooking. She intends to pursue a career in science. She is a member of St. Mary Catholic church in Chelsea.

Chelsea High School 1974 Track Schedule

May 23-Dexter Home
May 29-Conference South
June 1-State Meet East Lansing

CHELSEA HEATING CO.

WARM AIR HEATING - HOT WATER HEATING
AIR CONDITIONING - HUMIDIFIERS

Gas and Oil Service



Phone 475-2419

Your International Dealer

MENAGERIE MANOR ANIMAL FARM

Farm Animals Exotic Animals & Birds

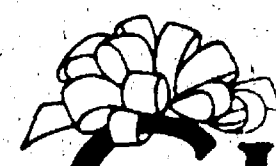
OPEN: May - October

Located between Stockbridge and Gregory
14140 Worden Rd. (off M-106)

Admission: 50¢ ea.

Ph. 498-2155

Want to sell a car? Try a Standard Want Ad!



GIFTAMERICA®

© 1974 GIFTAMERICA

CHELSEA CARD & GIFT SHOP

116 S. MAIN ST.

PHONE 475-7501

We've got the Happy Medium.

Plymouth Satellite



It's more than a compact. Priced less than a full-size car.

We call our Plymouth Satellite the Happy Medium because it's sized big enough for comfort, but small enough for economy. Satellite seats as many people as most bigger cars, and gives you plenty of trunk space. But it features mid-size parking,

a great shape, and runs on regular gas. Maybe that's why, in just the past three years, over a quarter million people have switched to Satellite from other makes of cars. And we're still going strong. Stop in, and check out the '74 Satellite, now.

See Satellite, Sebring, Sebring-Plus, and our great Satellite Wagons.

AUTHORIZED DEALER

CHRYSLER

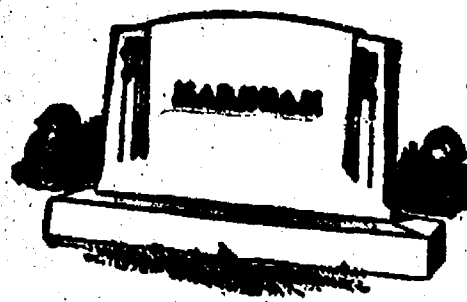
PAA

VILLAGE MOTOR SALES, INC.

1185 MANCHESTER ROAD

CHELSEA, MICHIGAN

SALES



MAUSOLEUMS ★ MONUMENTS
BRONZE TABLETS ★ MARKERS

BECKER MEMORIALS

6033 Jackson Road
ANN ARBOR, MICHIGAN



Week of May 27-31
Monday - Memorial Day, no school.

Tuesday—Hotdogs on buns with trimmings, tatar tots, with catsup, buttered vegetables, pudding, and milk.

Wednesday—Savory beef over mashed potatoes, buttered wax beans, bread and butter, cake with fruit sauce, and milk.

Thursday—Submarines, soup and crackers, fruit mix, bar cookie, and milk.

Friday—Pizza, buttered corn, cottage cheese salad, bread and butter, pink applesauce, cookie, and milk.

Telephone Your Club News
To 475-1371

LOSE UGLY FAT OR PAY NOTHING
Start losing weight today OR MONEY BACK. MONADEX is a tiny tablet that will help curb your desire for excess food. Eat less-weigh less. Contains no dangerous drugs and will not make you nervous. No strenuous exercise. Change your life... start today. MONADEX costs \$3.00 for a 20 day supply and \$5.00 for twice the amount. Lose ugly fat or your money will be refunded with no questions asked by:

CHELSEA DRUG STORE
Chelsea - Mail Orders Filled

SPRING TUNE-UP TIME

at

TOWER SHELL

6-CYLINDER

\$35.00

8-CYLINDER

\$40.00

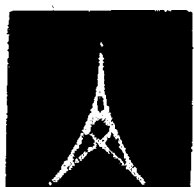
Price Includes

ALL PARTS and LABOR

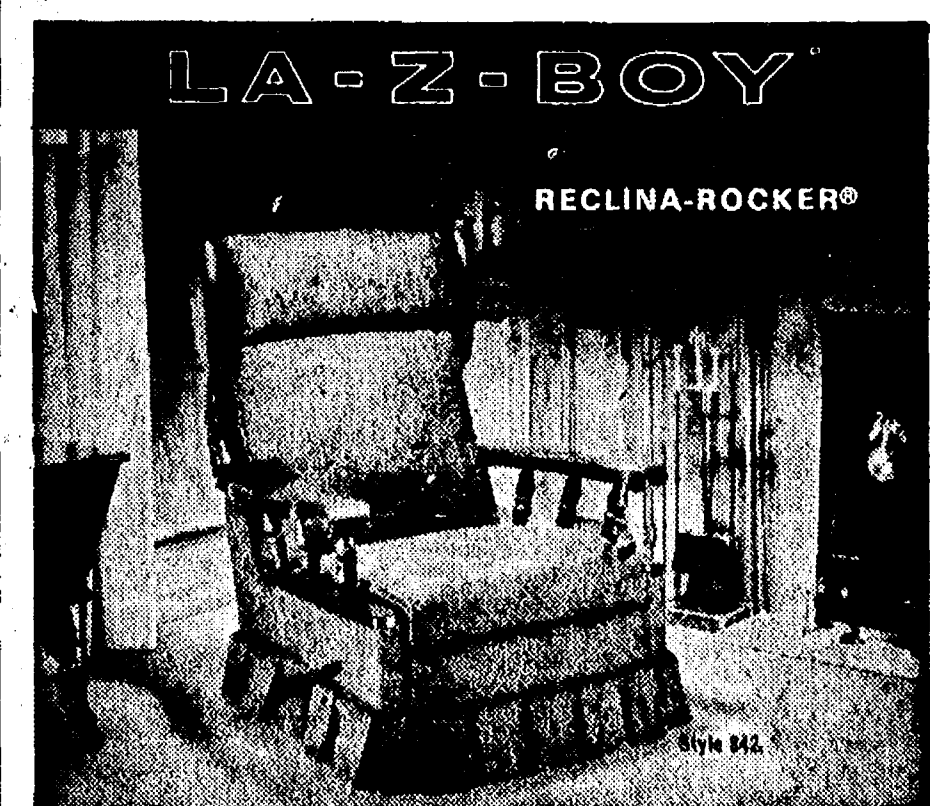
PLUS - Our 10-POINT ANALYZER CHECK-UP

- 1.—TIMING
- 2.—DWELL
- 3.—CARB. ADJ.
- 4.—IDLE SPEED
- 5.—PCV VALVE
- 6.—ALTERNATOR
- 7.—BATTERY
- 8.—LIGHTS

- 9.—FUEL FILTER
- 10.—AIR FILTER



475-2691



This chair is destined to be bought after by every member of your family. The generous proportions are enhanced by the burnished dark pine finish of the wood accents. It is fully reclining. It's the rocker that doesn't look like a rocker. La-Z-Boy's exclusive Comfort Selector's three-position

leg-rest can be easily adjusted with or without reclining the chair. This graceful styling is certain to add charm and warmth to your home. A selection can be made from hundreds of attractive decorator colors and fabrics, most of them treated with Scotchgard Fabric Protector.



Merkel Home Furnishings

Open Mon. & Fri. Until 9

Ph. 475-8621



Club and Social Activities

PHOEBE CIRCLE

Phoebe Circle of the First United Methodist church met Wednesday May 15, at 1 p.m. in the Methodist Home.

A dessert luncheon was served by Mrs. Pearl Engelbrecht, who acted as hostess.

A program was presented based on a story entitled "The Prayer Rug," which was written and read by Mrs. Winifred Jordan. The story was illustrated by Mrs. Anna Belle Closson, with many hand-drawn pictures of various church signs and symbols.

Funds were collected for the Heart and Hand House in Philip, Va.

Next meeting will be held on June 28 at 12 noon, with pot-luck luncheon at the home of Mrs. Anna Belle Closson.

BIRTHDAY GATHERING

Mrs. May Jedele of Chandler St. was pleasantly surprised for her birthday last Sunday, May 19, by a number of relatives and friends. Guests were her daughter and son-in-law, Mr. and Mrs. Ray Bemis of Osego; two grandsons and their wives, Mr. and Mrs. Bernard Bemis and son of Allegan, and Mr. and Mrs. Dale Bemis of Osego; all son Mr. and Mrs. Louis Wolfe of Saranac; Mr. and Mrs. James Carraher of Garden City; Mr. and Mrs. William Osterman; Mr. and Mrs. Carl Viviano and family, from Detroit; and Mrs. Josephine Bennett and daughter Jody, of Chelsea.

OLDER ADULT GROUP

Older Adult Group of the First United Methodist church met Saturday, May 18 with 21 members present. Lyman Adams gave grace, followed by a pot-luck dinner.

Miss Florence Ives furnished a birthday cake, while Gary Robinson played "Happy Birthday" for Helen Lindeman, Mildred Brown and Freda Bommer.

Mrs. Herbert Paul gave the reading, "Grandmothers, What They Are Now and What They Used To Be," and "Sure Signs of Spring." Mrs. Rae Lillie read verses from Ecclesiastes with the poem, "Tranquility."

Mrs. Lyman Adams also gave a reading of "One Solitary Life" and "God is the Answer," which is Romans 12:14 to 21 verse. "How To Cure a Cold," and "Old Time Church on Sunday," were read by Mrs. Paul.

A short business meeting followed. The group plans a pot-luck picnic for June 15.

All signed a get-well card for Herbert Dreher, who is at St. Joseph Mercy Hospital.

Get-well wishes from all of the group go to Mrs. Bert Pearson, who is confined to Chelsea Medical Center for a month.

CHILD STUDY CLUB
Chelsea Child Study Club's annual spring dinner was held May 14 at the home of Mrs. Richard Borton, with dessert and installation of officers following at the home of Mrs. Gerald Giffin.

Honorary members attending were Mrs. Charles Lancaster, Mrs. Richard Kern, Mrs. Paul Schaible, and Mrs. Raymond Seitz. Mrs. Thomas Bust was welcomed as a new honorary member.

Mrs. Martin Steinbach, second president of the club, was the installing officer. A short skit called "All in the Club" was the entertainment, presented by Mrs. Richard Borton, Mrs. Charles Thomas, Mrs. Bruce Galbraith, Mrs. James Gray, Mrs. Joseph Marzec, and Mrs. Thomas Donkin.

After a summer vacation, meetings will resume the second Tuesday in September.

SUN POWER

In a single year the sun's energy reaching the earth's surface is equal to the energy from burning 120 trillion tons of coal—about 25 times more than the world's estimated coal reserves.



Mr. and Mrs. Reuben Lesser

Reuben Lessers Will Be Honored At June 2 Open House Event

An open house at the Chelsea Fair Service Center is planned to celebrate the 50th wedding anniversary of Mr. and Mrs. Reuben Lesser of Chelsea on Sunday, June 2, from 2 to 5 p.m.

The event will be hosted by the couple's children, Mr. and Mrs. Reuben Lesser, Jr., of Chelsea, and Mr. and Mrs. James W. Hall of Osego, and their grandchildren, Mark Lesser of Chelsea, Mr. and Mrs. Robert Brammer of Belleville, Ill., and Mr. and Mrs. Rick Smith of Shaw, AFB, S.C.

The Lessers were married Wednesday, June 4, 1924, (Mr. Lesser's birthday) at 3 p.m. at Zion Lutheran church, Rogers Corners.

Several Area Students On Dean's Honor List At Kalamazoo College

Several area residents and former residents were recently announced as placing on the dean's list at Kalamazoo College for the spring quarter. Those designated "high honors" earned better than a 3.75 average for the term.

Appearing on the dean's list were: Stephen Siebert, son of the Rev. and Mrs. Warner H. Siebert of 1005 Church St., N. Canton, O.; Michael Thompson, son of Mr. and Mrs. John R. Thompson of 1318 Three Mile Rd., Grosse Pointe; Steve Thompson, son of Mr. and Mrs. John R. Thompson of 1318 Three Mile Rd., Grosse Pointe; Michael Herget, son of Mr. and Mrs. Harvey Herget of 4998 S. Lake Rd., Grass Lake, high honors; and Jill Kipfmiller, daughter of Mrs. Joan E. Kipfmiller of 11909 Jackson Rd., Dexter, high honors.

What's Cooking In Michigan

By Larrestine Trimm

Michigan Dept. of Agriculture Marketing Information Specialist
Feast on Michigan foods as part of your Michigan week activities. Michigan farmers received a record \$1.4 billion for their products in 1973, according to Marketing of Michigan Department of Agriculture. With the addition of transportation, processing and marketing, the value of Michigan agricultural industry is nearly \$1 billion, making it the state's second largest source of income.

You'll have no problem finding Michigan foods in area supermarkets because almost 50 food products are grown commercially in Michigan. If you're watching your budget closely, MDA marketing of Michigan foods is generally more economical when foods are in moderate to abundant supply.

Bring the freshness of spring to your table with a succulent beef sirloin tip or rump roast and all the trimmings. Boneless cuts are easy to prepare and leftovers make great lunchbox sandwiches.

Often boneless cuts, even though priced a bit more, are better buys because they have little waste. With sirloin tip or rump roast, you get three servings per pound. To determine cost per serving, divide servings per pound by price per pound.

Beef goes well with most vegetables. Michigan potatoes are a natural accompaniment, whether baked, boiled, mashed or prepared in a special dish. It's the season for fresh Michigan asparagus. Try serving it with a savory cream sauce as a beef accompaniment. Another delightful side dish is made with fresh mushrooms sautéed in butter and mixed with early spring peas.

Select a Michigan wine to accompany your roast beef dinner. Michigan is fourth nationally in wine production. Wine experts recommend a red table wine like burgundy or beaujolais with roast beef.

Ladies Day Golf Event Rained Out Thursday at Inverness

About 20 ladies braved the overcast weather on Thursday, May 16, for Inverness Country Club's Ladies' Day. Only one team completed nine holes of golf before the rains came and all adjourned to the clubhouse for rolls and coffee.

Prizes were awarded to Elizabeth Frisinger for low putts, and to Ruth Cook for low gross.

Hostesses for the day were Yolaine Carignan and Jeanette Smith.

The Aztec Emperor Montezuma drank 50 jars of chocolate a day.



GIRL SCOUTS

TROOP 130
We went to Jodi Rowe's house. We saw her three-week-old foal, three horses, a kitten and a dog. We hiked around her farm and had treats in her back yard.
Michelle Fletcher, scribe.

DAYTIME TV
Could Daytime Television be the reason why "a woman's work is never done?"

LAURA'S BEAUTY SALON

LAURA DOWNER, Owner - Formerly Tina's Beauty Salon
116 S. MAIN ST. PHONE 475-7677

LAURA - TINA - MADELINE - ANGIE
OPEN MONDAY THRU SATURDAY
9 a.m. to 5 p.m.
EVENINGS BY APPOINTMENT

JUST ARRIVED!
New Stock of
SIMPLICITY PATTERNS
Beautiful Stock of
SWEATERS - CAPES
VESTS - ANGEL - TREADS
VOGEL'S STORE

VFW Auxiliary Officers Installed

VFW Auxiliary installation of officers was held Monday, May 20 in the VFW Hall.

Elected and appointed officers installed by Mrs. Harry B. White of Ann Arbor, a past department president, Mary Kniss, treasurer; Gertrude O'Dell, chaplain; Jenny Smith, conductress; Elsie O'Dell, guard; one-year trustee, Helen Harvey; two-year trustee, Geraldine Klink; three-year trustee, Sandi Ellenwood; Dorothy Lentz, secretary; historian, Eleanor Farley, musician; Ava Lorenzen, banner bearer; Lila Bohanna, flag bearer; Ruby Bauer, patriotic instructor; Lucy Platt, Bessie Sharp, Eulalie Packard, and Geraldine Klink, color bearers.

Visitors were Helen Hainer and Edna Lutz of Ann Arbor, and Kenneth Platt and Mac Packard of Chelsea.

BEEF UP THAT HOT DOG!

Create a juicy spicy frankfurter specialty called a "Coney Dog." It's easy to do. Just heat canned barbecued ground beef and spoon over the hot franks on buns.

Magic Mirror Beauty Salon

Open Tuesday thru Friday
9 a.m. to 9 p.m.
Saturday, 8 a.m. to 3 p.m.

PHONE 665-0816

Ruth Circle Meets At Methodist Home

Ruth Circle of the First United Methodist church met at the Crippen Memorial Building Wednesday, May 15, at 1 p.m.

Refreshments were served by Mrs. Cora Dolan and Miss Marjorie North. The tea pot used is a treasured possession of Miss North. It is a replica of a tea pot which belonged to John Wesley, given to him by Mr. Wedgewood. It is beautifully decorated with wreaths and garlands of flowers, each with a special meaning. There are blessings on two sides of the tea pot. Miss North related the history of the original tea pot, which had a capacity of one gallon. It is now in a museum. The napkins used at the tea had a picture of the John Wesley tea pot on them. One of the blessings was read as the table grace.

Miss North read the 23rd Psalm followed by a prayer in the Devotional Period.

Mrs. Eulalie Packard presided at the business meeting in the absence of the chairman.

Thank-you notes were read from Mrs. Minnie Lesser and Mrs. Mabel Snider. Mrs. Helen Pearson is still a patient at Chelsea Community Hospital.

Mrs. Packard read a poem "Giving Thanks" at the close of the business meeting. Miss North then presented a program, "Women of the Bible," portrayed by Mrs. Mary Lou Haas, Miss Martha Earles, Mrs. Helena Switzer, Mrs. Cora Dolan, and Mrs. Hazel Summers in the costumes of Biblical days.

There were 23 members and two guests present. Ruth Circle will meet June 19 at 12:30 p.m. for a pot-luck dinner at the Crippen Building.

The Latest in SPRING FASHIONS

featuring
★ Personalized Hair Coloring
★ Precision Style Cuts

Now Open Mondays

VILLAGE BEAUTY SALON

Arlene - Cheryl - Carol - Janice - Janie
107 N. MAIN, CHELSEA PHONE 475-1671

FIRST YEAR ANNIVERSARY

SALE

15% OFF
On everything in stock
except hosiery and foundations.

KAREN'S BOUTIQUE

Use Your BankAmericard

Open Fri. until 8; Sat. until 5

THINK ABOUT IT
Jet Spray Carpet Cleaning
Phone John Lixey 761-3025 or 475-1509

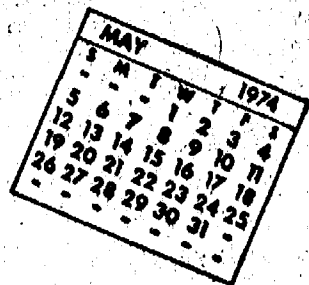
YOUR BANKAMERICARD ACCEPTED

LAST 3 DAYS
SALE ENDS SATURDAY
STORE-WIDE CLEARANCE
SAVE 10%
On Any Item in Stock
LOOK FOR RED TAG SUPER BARGAINS
REDUCED UP TO 50%

MERKEL
HOME FURNISHINGS



Community Calendar



Special communication, Olive Lodge No. 155, F&AM, FC degree, Tuesday, May 28, 7:30 p.m.

South Elementary school ice cream social, Friday, May 31, 6:30 p.m. Music program presented by the classes of South School, and softball game, North school vs. South school.

North Lake Co-op Nursery is accepting applications for 1974-75 school year for fun-loving 3- and 4-year-olds. Call 475-7061 or 475-7388 for information. adv 49

Dexter Sesquicentennial luncheon and style show June 28, 12 noon. \$3 tickets available at the Dexter Bakery, McLeod Pharmacy, Sesquicentennial headquarters. adv x49

Lutheran Retirement Center, 1200 Earhart Rd., Ann Arbor, (1 1/2 miles north of Concordia Lutheran College), community-wide Open House Sunday, June 2, from 1 to 4 p.m. Public invited to take a guided tour of the residential building, the recreational areas and also the 70-bed attached nursing care facility. Refreshments will be prepared by the Center's food service staff.

Chelsea Co-op Nursery is now taking applications for 1974-75 classes for three and four-year-olds, both mornings and afternoons, assist and non-assist. Anyone interested in receiving an application, call Phyllis Muncer, 475-1751 adv 50

Sylvan Township Board meeting the first Tuesday of the month, at 7 p.m., at Sylvan Township Hall.

Evangelist Bill Rice III, revival services, North Sharon Bible church, May 27 to June 2, 7 p.m. nightly. All meetings interpreted for the deaf.

Rogers Corners Study Group Thursday, May 23, 6:30 p.m., corner of Fletcher Rd. and Waters Rd. to go to dinner.

Washtenaw County Council on Aging, spring membership dinner meeting, Thursday, May 23, 4:30 p.m., Chelsea United Methodist Home. Featured speaker: Dr. Natalie Trager, Supervisor of Operation and Grants Management, Office of Services to the Aging in Lansing. For dinner reservation, contact the Retired Senior Volunteer Program office at 971-7780. Transportation available.

Waterloo Memorial Program, Sunday, June 2, 2 p.m., Waterloo Village church.

Open meeting of Advisory Committee on the Status of Women, first and third Monday of every month, 7:45 p.m., room 117A Washtenaw County Building, corner of Huron and Main, Ann Arbor.

Pap tests are free for all area women, Tuesday mornings, at St. Joseph Mercy Hospital, Ann Arbor. Call American Cancer Society office, 668-8887 for appointment.

American Legion and Auxiliary hospital equipment available by contacting Pat Merkel at 475-1824.

North Sharon Bible church balcony ascension, Sunday, May 26, 11 a.m.

"Meet the Mormons," St. Barnabas church, Old US-12, Sunday, May 26, 2 to 5 p.m. open house.

United Methodist Home Volunteers, Tuesday, May 28, 10 a.m., at the home.

North Sharon Bible church formal spring banquet for teens, ages 14 to 21, Saturday, June 8, 7:30 p.m., Sweden House in Jackson. For reservations, call 428-7222.

Monetary donations for Home Meal Service of Chelsea should be sent to Mrs. Helen Pearson, 725 W. Middle St.

Inquiries regarding the Chelsea blood bank may be directed to Harold Jones in the event that Mrs. Dudley Holmes is unavailable, or to Mrs. Pauline McKenna, American Red Cross in Ann Arbor, 971-5300.

Senior Citizen Fun Nite every Friday evening at 7:30.

One hot meal a day delivered to the home of elderly or disabled, seven days a week, to people living in the Chelsea area. For information call 475-8014 or 475-2823.

Chelsea Jaycees annual rummage auction, Saturday, June 29, 1 p.m. For pick-up of usable rummage, call Norm Colby, 475-7321, or Dick Call, 475-2593; or evenings Jerry Kraus, 475-1686, or Mitch Zink, 475-7912. adv 4911

Little League Registration Set Saturday

It's only a matter of time until summer, now that Chelsea Recreation Council news is coming in thick and fast.

Registration for T-Ball and Little League baseball for boys eight to 12 years, is scheduled for Saturday, June 1 from 1 to 3 p.m. in Chelsea High school gym.

Jim Ticknor, director of these two leagues, will be on hand at registration to welcome registrants and their parents. Parents are asked to accompany their boys to registration.

Director Ticknor is currently in need of managers and coaches for Little League and T-Ball teams. Anyone interested in managing or coaching should contact either Recreation Council Director Tom Balistrere at 475-8511, or Ticknor at 475-7197.

Ticknor notes that the two groups are in dire need of coaches and would appreciate calls from interested people as soon as possible.

POWER FOR THE 1980's
By 1980 nuclear power is expected to replace the equivalent of about 2,500,000 barrels of oil per day or 224,000,000 tons of coal a year while producing 20 percent of the nation's electrical output.



TOURING CHELSEA MEDICAL CENTER
was one of the stops during Mayor Exchange Day for Chelsea's exchanges from Wixom. Pictured above are Richard Hinds, administrator of the Medical Center, Dr. James Shadoan, Veronica Hessel, head nurse, Dr. Val Vangieson, council member from Wixom, Mrs. Sylvia Vangieson, Mrs. Pearl Willis, and Gilbert Willis, mayor of Wixom.

Visiting Mayor Tours Hospital's New Outpatient Surgical Center

The nearly completed outpatient Surgical Center of Chelsea Community Hospital was a featured stop Monday for official visitors to Chelsea during Mayors' Exchange Day.

Hosted by Hospital Administrator Richard Hinds and led on a tour of the facilities by Dr. James Shadoan, were two couples from Wixom, Mayor and Mrs. Gilbert Willis and Dr. and Mrs. Val Vangieson, a Wixom councilman.

They toured the Chelsea Medical Center grounds, had lunch with Chelsea Village officials and viewed the Surgical Center which is due to open June 3.

Designed expressly for the new concept of outpatient surgery, the Center is the only one of its type in Michigan, according to Hinds, and also represents a first in providing this type of medical service in a rural area.

The Center will save on hospital costs for patients by allowing doctors to schedule one-day surgery for non-major operations. The patient both enters and leaves the hospital the same day, recovering under medical supervision at home. Experience at other outpatient surgical centers has shown that they promote rapid recovery at home. Hinds noted, and the patient loses less time from job and family. This is a particular advantage for young families in which either the parents or children need surgery, he added.

The Wixom visitors also toured the new six-bed coronary and intensive care unit, radiology suite, emergency suite and physicians' offices which are contained in the Center.

Band Booster Calendars Now Being Sold

Chelsea Band Boosters calendars are now being sold by members of Chelsea bands. Each band member has been asked to sell a minimum of three calendars.

Residents who have not been contacted by a band member and would like to purchase a calendar should use the coupon in this issue of The Standard.

Subscribe today to The Standard!

change Day luncheon in the hospital dining room were: Mr. and Mrs. Thomas Dmoch, Mr. and Mrs. Donald Wood, Mr. and Mrs. Bruce Galbraith, Dr. and Mrs. Richard K. Borton, Mr. and Mrs. Frederick Weber, village administrator, and

Rec. Softball Program Starts Tuesday

(Continued from page one)

have begun play on the high school field. Slow-pitch games are scheduled for Monday, Tuesday, and Thursday.

Once the high school field is available for use (which means after the conclusion of the High School Regional Tournament, held in Chelsea this year), each league will play two games each night.

This week's schedule for fast-pitch will see Thompson's Pizza vs. Sweepsters, Tuesday, May 28, South school, 6:30 p.m.; and Chelsea Milling vs. St. Paul's, Thursday, May 30, South school, 6:30 p.m.

Slow-pitch games will open Tuesday, with Rulea Farms taking on the Independents at the new grass field at the high school at 6:30 p.m. Other games this week include Fortune Industries vs. Eagles, Wednesday, May 29, new grass field at the high school, 6:30 p.m. and IPSCO vs. Mark IV Lounge, Thursday, May 30, new grass field at the high school, 6:30 p.m.

Tournament action for slow-pitch teams will begin the week of July 22; while fast-pitch tournament play will follow the week of July 29.

Questions about the program for this year should be directed to Charles Waller, director for both slow and fast-pitch leagues, at 475-8816.

DESERT CONDOMINIUMS

Giant saguaro cactuses serve as desert condominiums. Gila woodpeckers and gilded flickers peck out nest-size caves; then successions of other birds, bats, rodents, and insects move in.

Sidewalk Festival Will Include Greatly Enlarged Street Art Fair

Chelsea's second annual sidewalk festival of the less "quality" items and up-graded the fair in general. Last year's sidewalk festival included booths of ceramics, leather goods, oil and watercolor painting, pottery, photographs, "ecology boxes," jewelry-making, batik-dyeing, glass-blowing, and weaving, among others.

According to a pamphlet available to potential displayers, "artists are encouraged to be present whenever possible to discuss, and demonstrate their crafts."

Specific regulations regarding the sidewalk festival include: —entry fee is \$10 for two days (artist is required to exhibit both days).

—each entry receives a 10-foot space.

—to receive acceptance by the jury, contact Robert Merkel at Merkel Brothers Home Furnishings, 209 S. Main St., with either a picture or original form of the work. Only hand-made items will be accepted.

—payment may be made to Robert Merkel or by mailing a check to Chelsea Sidewalk Festival, 121 Main St., Chelsea 48118.

—deadline for reservations is July 27. Cancellations in writing will be accepted no later than Aug. 3. No entry fees will be refunded after that date.

In addition, it is suggested that each artist include a table and easels to display his work, and that each artist display work of no more than three media. Artists should provide their own preparations for possible rain.

For further information, contact Pat Dittmar at 475-2512, or obtain a copy of Sidewalk Festival guidelines at Tailfeather Creations or other local business establishments.

Spaghetti Dinner Funds Will Benefit Home Meal Service

St. Barnabas Episcopal church has planned a spaghetti dinner for Saturday, June 1, with proceeds to be donated to Home Meal Service of Chelsea and to defray costs of physicals for area handicapped children who participated in the recent special Olympics at Milan.

The dinner is planned for 5 to 7 p.m. For ticket information, contact Joan Waller at 475-8816.

Awarded Scholarship

Carol Weir, daughter of Mr. and Mrs. Stanley Weir, 870 McKinley Rd., has been awarded an Eastern Michigan University Community College Honors Scholarship for the 1974-75 academic year.

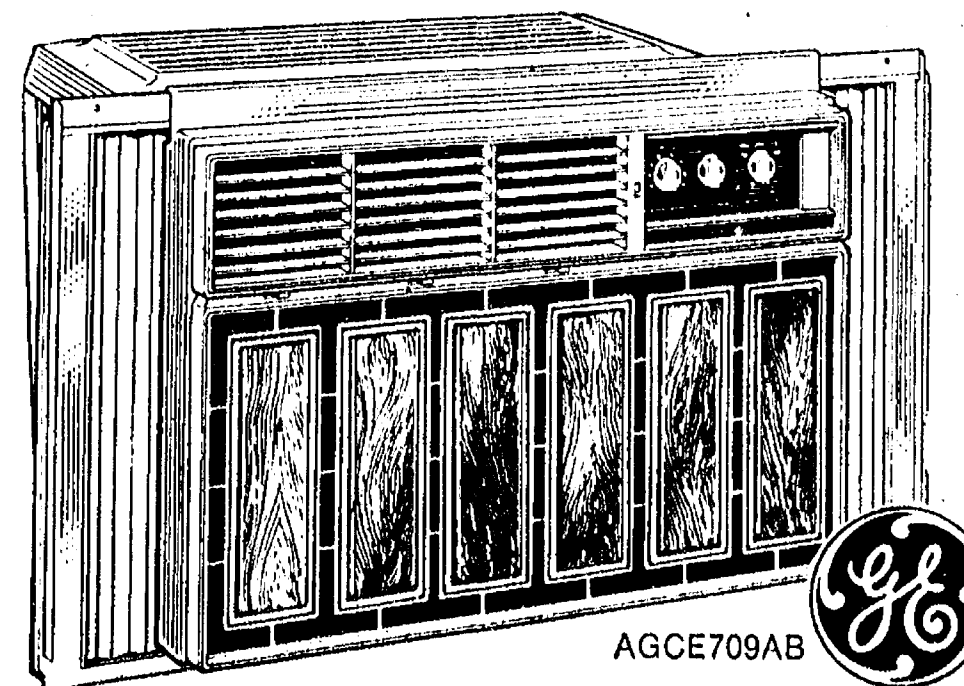
PRE-SEASON CASH & CARRY SALE



BUY NOW!

for the hot times

Save 10% off regular price
on all air conditioners
during our pre-season promotion



4,000 BTU
Bedroom
Air Conditioner
as low as

\$98⁸⁸

Many models available for all types of installation.

HEYDLAUFF'S

113 N. Main St., Chelsea

Phone 475-1221

WE HAVE IT! SHERWIN-WILLIAMS® Gloss Latex House Paint

Give your house the traditional glossy look of oil base paint with the easy application, fast-drying, water clean up of latex.

- Covers wood, metal, masonry, asbestos shingle, aluminum siding
- Covers metal gutters, doors and window trim
- Self-priming over repaint surfaces in good condition
- Excellent gloss and color retention
- Resists blistering and peeling



40 Colors
To Choose
From

GAMBLES
10-N Main Phone 475-7472

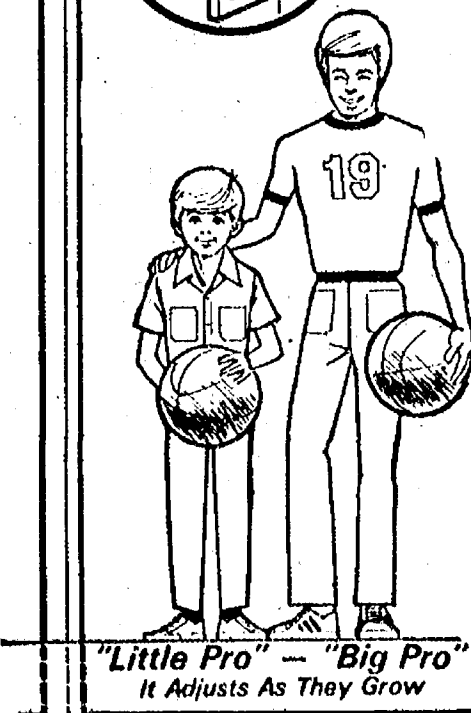
Basketball PRO-POLE

The Pole That Grows With The Pro — Completely Adjustable To The Shooting Height Of The Little Pro, And The Big Pro.

EASY TO INSTALL A Truly Quality Product

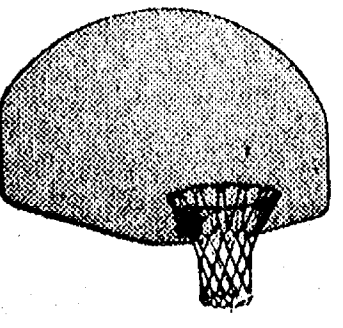
With The Following Features:

- 4"x4"x heavy ga. tubing on the upright
- 4"x4"x heavy ga. tubing on the extending arm
- 6"x8"x 3/4" mounting plates
- Heavy 1/2" U-bolts complete
- Back Board Mounts 42 1/2" out from upright pole
- Prime coated with rust resistant paint



\$45⁰⁰

REGULATION SHAPE
BACKBOARD & GOAL
\$21.59



At CHELSEA LUMBER

MEMORIAL DAY WEEKEND

FOOD SPECIALS

NEW SUMMER HOURS

8 a.m. to 10 p.m.
DAILY
10 a.m. to 6 p.m.
SUNDAY



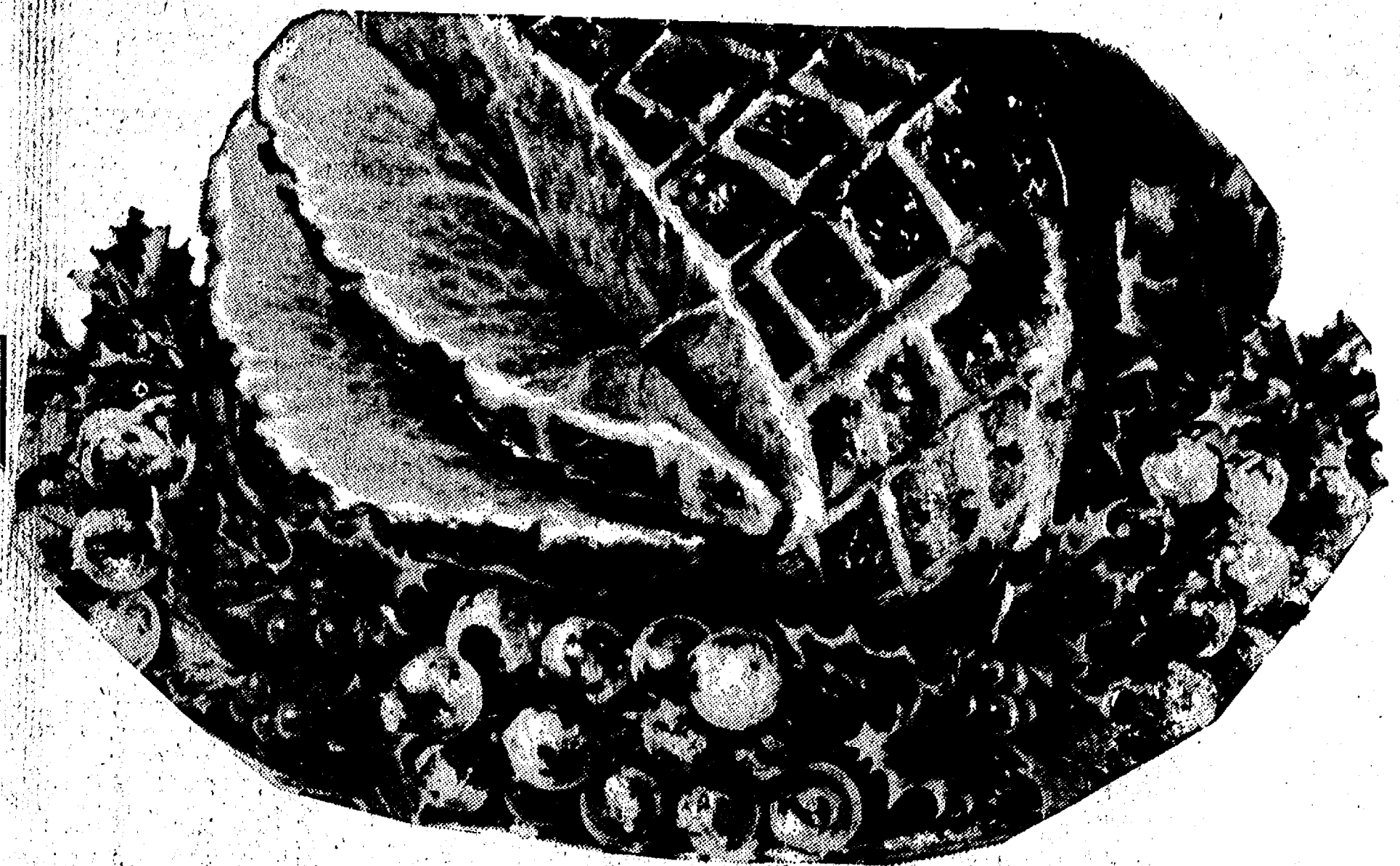
Polly's
MASTER MARKETS

Summer find!

GRILL OUT SPECIALS!

OPEN
MEMORIAL DAY!!
8 a.m. to 1 p.m.

1101 M-52
CHELSEA



U.S.D.A. CHOICE BLADE CUT

CHUCK STEAKS lb. **69¢**

LEAN, MEATY

SPARE RIBS lb. **88¢**

ECKRICH ALL-BEEF or ALL-MEAT

FUN FRANKS lb. **89¢**

USDA CHOICE BONELESS ROLLED ROUND OR
RUMP ROAST lb. **\$1.59**
USDA CHOICE BONELESS
CLUB STEAK lb. **\$1.99**
LEAN CENTER CUT BONELESS
PORK CHOPS lb. **\$1.89**

USDA CHOICE BONELESS
SIRLOIN TIP STEAK lb. **\$1.89**
USDA CHOICE BONELESS
NEW YORK STRIP STEAK lb. **\$2.79**
LEAN BOSTON STYLE BONELESS
ROLLED PORK ROAST lb. **99¢**

FARMER PEET'S
FINEST BONELESS

BONANZA HAM

WHOLE OR HALF **\$1¹⁹**

FRESH GROUND ALL-BEEF

HAMBURG

88¢ Lb.

HERRUD'S

"OLE VIRGINIA"

SEMI - BONELESS

HAM

WHOLE
14 to 17 Lb. Avg.
Per Lb.

69¢ Lb.

HALF - CUTS **79¢** Lb.

SWIFT'S PREMIUM
LEAN FANCY

CANNED HAM

5-Lb. Can. **\$4⁹⁹**

FRESH DRESSED SPLIT

BROILERS

58¢ Lb.

SWIFT'S PREMIUM
SLICED BACON lb. **89¢**
USDA CHOICE BEEF ENGLISH CUT
CHUCK ROAST lb. **89¢**
USDA CHOICE BEEF ARM CUT
CHUCK ROAST lb. **99¢**
USDA CHOICE ALL-MEAT BONELESS
CHUCK ROAST lb. **\$1⁰⁹**
HERRUD'S CHUNK STYLE
BRAUNSCHWEIGER lb. **49¢**
HERRUD'S ALL MEAT
FRANKS 2-lb. pkg. **\$1⁵⁹**

SWIFT'S PREMIUM
ALL-MEAT FRANKS lb. **79¢**
HERRUD'S MILD OR HOT PURE
PORK SAUSAGE lb. **55¢**
ARMOUR STAR CONVENIENCE
CANNED HAM 1 1/2-Lb. Can. **\$1⁹⁹**
ARMOUR STAR JET-NET BONELESS
LEG-O-PORK lb. **\$1¹⁹**
8-OZ. ANY VARIETY FARMER PEET'S
LUNCH MEATS lb. **\$1⁰⁹**
U.S.A. GOVT. INSPECTED NEPTUNE
TURKEYS lb. **59¢**

ARMOUR'S COLUMBIA
SLICED BACON lb. **69¢**
12-OZ. PKG. HERRUD'S PURE PORK
LINK SAUSAGE lb. **79¢**
10-OZ. PKG. HERRUD'S
SMOK-Y-LINKS lb. **89¢**
12-OZ. PKG. HERRUD'S
SLICED BACON lb. **79¢**
ECKRICH
SMORGAS PAC lb. **\$1³⁹**
LEON'S BULK
BAKED BEANS lb. **45¢**

VALUABLE COUPON
20¢ OFF
THE PURCHASE OF ANY 20-LB. BAG OF
CHARCOAL
SAVE 20¢ WITH COUPON
LIMIT 1 EXPIRES MAY 27, 1974

VALUABLE COUPON
REGULAR OR DIET
SHASTA POP
12-Oz. Cans
8 for \$1
SAVE 11¢ WITH COUPON
LIMIT 8 EXPIRES MAY 27, 1974

VALUABLE COUPON
KRAFT
MIRACLE WHIP
1-Qt. Jar
69¢
SAVE 19¢ WITH COUPON
LIMIT 1 EXPIRES MAY 27, 1974

VALUABLE COUPON
HILLS BROS.
COFFEE
10-Oz.
\$1.49
SAVE 50¢ WITH COUPON
LIMIT 1 EXPIRES MAY 27, 1974

VALUABLE COUPON
REG. SIZE
DIAL SOAP
5 for **69¢**
SAVE 41¢ WITH COUPON
LIMIT 5 EXPIRES MAY 27, 1974

VALUABLE COUPON
HEAVY DUTY LIQUID DETERGENT
DYNAMO
59¢
SAVE 13¢ WITH COUPON
LIMIT 1 EXPIRES MAY 27, 1974

VALUABLE COUPON
COCONUT
NU-SOFT
32-Oz.
59¢
SAVE 20¢ WITH COUPON
LIMIT 1 EXPIRES MAY 27, 1974

VALUABLE COUPON
AIR FRESHENERS FROM
GLADE
7-Oz.
2 for \$1
SAVE 18¢ WITH COUPON
LIMIT 2 EXPIRES MAY 27, 1974

VALUABLE COUPON
REG. OR LEMON JOHNSON'S
PLEDGE
7-Oz.
79¢
SAVE 16¢ WITH COUPON
LIMIT 1 EXPIRES MAY 27, 1974

VALUABLE COUPON
GAINES
DOG MEAL
25-Lb. Bag
\$3.79
SAVE 62¢ WITH COUPON
LIMIT 1 EXPIRES MAY 27, 1974

do your food shopping where **every penny counts**

OPEN PIT 18-OZ.
BARBEQUE SAUCE
3 FOR \$1 SAVE 35¢

3 PAK
PRINGLES
99¢ SAVE 20¢

12 PAK - 12-OZ. CANS
PEPSI
99¢ SAVE 54¢

POLLY'S HOMOGENIZED
MILK
\$1¹⁹ Gal. SAVE 20¢

NABISCO 19-OZ.
OREOS COOKIES
59¢ SAVE 36¢

1 POUND
IMPERIAL MARGARINE **49¢**
GOLDEN CROWN 32-OZ.
LEMON JUICE **43¢**

ASSORTED 11 1/2" - 16-OZ.
TONY'S PIZZAS **99¢**
NABISCO 9.5-OZ.
TRISCUIT CRACKERS **59¢**

AUNT JEMIMA FROZEN 9-OZ.
FRENCH TOAST **59¢**
ORE-IDA 7-OZ.
ONION RINGS **29¢**

SEALTEST 1/2-GAL.
LIGHT n LIVELY MILK **59¢**
SEALTEST
QUART BUTTERMILK **29¢**

ORE-IDA FROZEN 12-OZ.
HASH BROWNS **4 for \$1**
HARRIS 8"
APPLE PIE **69¢**

BORDEN'S 12 PAK
TWIN POPS or FUDGE BARS
49¢ SAVE 20¢ or 30¢

POLLY'S 8 PAK HAMBURG AND
HOT DOG BUNS
29¢ SAVE 14¢

SCOT LAD 6-OZ.
LEMONADE
10 FOR \$1

Fresher by Far Produce
CALIFORNIA U. S. No. 1
POTATOES
SWEET DARK **CHERRIES** lb. **89¢**
MEDIUM YELLOW **ONIONS** lb. **10¢**
RED RIPE **WATERMELON**
20-22-Lb. Whole **\$2²⁹**
8-Lb. Bag **\$1³⁹**
VINE-RIPE **TOMATOES** lb. **39¢**
TENDER YELLOW **CORN** ear **8¢**

Ads
Taken
till 1 p.m.
Tuesday

USE ACTION-PACKED WANT ADS

Just
Phone
475-1371

WANT ADS

The Chelsea Standard WANT AD RATES

PAID IN ADVANCE—An regular advertisement, 75 cents for 25 words or less, each insertion. Count each figure as a word. For more than 25 words add 3 cents per word for each insertion. "Blind" ads or box number ads, 50 extra per insertion. **CHARGE RATES**—Same as cash in advance with 25 cents bookkeeping charge if not paid before 1 p.m. Tuesday preceding publication. Pay in advance, send cash or check and save 25 cents.

DISPLAY WANT ADS—Rate, \$1.40 per column inch, single column width only. 8-point and 14-point type only. No borders or boldface type. Minimum 1 inch.

CARDS OF THANKS or MEMORIALS—Single paragraph style, \$1.50 per insertion for 25 words or less; \$1.75 per word beyond 25 words. **COPY DEADLINE**—1 p.m. Tuesday week of publication.

SPECIAL—Ceramic tile bath 4x8x4 materials and labor, \$189. Also repair. Call (1) 483-4615, or 1-481-1641.

FORMAL WEAR RENTAL SERVICE

Proms - Weddings - Special Events
8 different colors.

Foster's Men's Wear

21
CAR & TRUCK LEASING. For details see Lyle Christwell at Palmer Motor Sales, 475-1301. 49tf

C—Custom Built Homes
U—Hi We Remodel too.
O—can count on us
N—Job Too Small
T—rim Inside & Out
R—ough-in Only If
Y—ou Want to Finish
S—iding Aluminum, 5" Gutters
I—mmediate Attention
D—ALE COOK & CO.
E—stimates, Free

BUILDERS

Please Call
475-8863

DALE COOK

17th
WANTED TO RENT — Working couple desires to rent small farm or home in country. Will improve. References, lease, damage deposit. Ph. 763-0472, evenings. x44tf

"HILLTOP"

PLUMBING, HEATING & ELECTRICAL CONTRACTING
Robert Shears, Master Plumber
NO JOB TOO LARGE OR TOO SMALL

We sell Sun Pool Chemicals

1414 S. Main St., Chelsea, 475-2949 x45tf

LOVELY 4-BEDROOM home, 1 1/2 bath, large landscaped lot, 1-car garage, full basement, rec. room. Quiet neighborhood, close to elementary school. Terms available. 580 Chandler St. Ph. 475-7252. x49

General Carpentry Also Repairs

Chelsea Ph. 475-9209 x47tf

FOR SALE—1970 Mustang, 6-cyl., auto., AM-FM radio, good tires. \$895. Call 475-8915. 49

WANT ADS

CALL NOW SAVE \$\$\$ Greenwood

for

Siding - Remodeling FREE ESTIMATES Call Chelsea 475-2400

29tf

FOR RENT—Fair Service Center for meetings, parties, wedding receptions, etc. Weekdays or weekends. Contact John Welnitz, phone 475-1518. x31tf

FOR SALE—Cavanaugh Lake, 7-room cottage, with access to lake, \$17,900. EVELYN WHITE 475-7551

ROY S. MILLER, BROKER 475-7311. x47tf

WANTED TO RENT—Couple with one child would like to rent 2-bedroom apartment or house in Dexter-Chelsea area. Call 426-2194 or 428-4978. x49

EARL KEIM REALTY

The helpful people.
REALTORS*

23 offices to serve you;
Resident associates in seven southeastern Michigan counties, including Washtenaw and Jackson.

Nationwide affiliates throughout the United States and Canada.

MANCHESTER — Relax on the greened front porch, and watch time go by. This three-bedroom, two-bath home also has a large dining room, and first floor utility room, \$28,300. Call 662-2571.

MOBILE HOME PARK SITE—20 acres in the city limits of Chelsea. Zoned "mobile home" with 20 lots. Call 662-2571.

SOLITUDE—When you drive down the tree-lined lane to this beautiful home with 15 acres on the Huron River, you have the comforts of home with the serenity of the countryside. Call 662-2571.

VACATION SPECIAL—Like new mobile home, on a very adequate lot. Around the corner from Bruin Lake Access Site. Only \$16,900. Call 662-2571.

EVENINGS:

Carol Lakatos 475-7129
Shirley Yongoyan 663-1351
Jean Moncrieff 663-0663
Ken Harvey 429-4072
Kelley Newton 662-0110
Barbara Piekles 439-7511
Pat Krian 481-0876
Fred Moncrieff 663-0663
Bart Hamilton, realtor
Maynard Newton 971-8870
Jean Tangalakis 662-9456
Carolyn Lewis 763-4251
Anne Duffendack 973-9897
Betty Jo Kolb 971-7132
Patricia Smit 769-0919
Katherine Stephens 994-4018 x49

PAINTERS FOR HIRE

Will scrape, paint, trim, shingle, etc. Also have experience in landscaping. Houses and barns our specialties. Wanted for summer and fall job. If interested call 475-8219 or 475-1119. x48

CHELSEA JAYCEES Auction - Rummage Sale Saturday, June 29 at 1 p.m.

For pick-up of your items to be donated, call Norm Colby 475-7821, Mitch Zink 475-7912, Dick Call 475-2593, Jerry Kraus, 475-1686. 49tf

WANT ADS

KNAPP SHOES

For Cushion Comfort
Robert Robbins
475-7282 49tf

Pickup Caps & Covers

For all makes and models. Standard and custom-designed. From \$147.00. Free brochure.

PIONEER COACH MANUFACTURING CO.

3496 Pontiac Trail
Ann Arbor, 668-8785 x42tf

Roofing & Repairs

Fully licensed and guaranteed.
FREE ESTIMATES
Phone 475-2722 x44tf

McCulloch Chain Saws

WE SELL, SERVICE,
SHARPEN AND TRADE.

Chelsea Hardware

ACCOUNTING, bookkeeping and all tax returns done on a monthly or quarterly basis. Ph. 475-7402. x47tf

GUARANTEED technical training of your choice. Good salary, free room and board, free medical and dental care and 30 days paid vacation every year. For appointment call U. S. Army Sgt. Gene Jones at 665-3731 today. x49tf

Real Estate One Of Washtenaw

1196 M-52
Chelsea, Mich. 48118
We Make Things Simpler
For You

PORTAGE LAKE — Fox Point. Large 2,400 sq. ft. 5-bedroom year-around home, fireplace, front porch, 2 full baths, 2-car garage, large lot. Quick occupancy, \$55,000. Evenings Bob Myrmet at 475-1449.

SPORTSMAN'S PARADISE

Over 35 rolling, partly wooded acres with a breathtaking view of a beautiful valley. Secluded building sites. Chelsea schools, \$69,000. Evenings AJ Kleis at 475-7322.

FANTASTIC, remodeled farm house, 5-bedroom, fireplace, family room, dining room, with barn and garage on 5 acres backing up to State land, 10 minutes north of Chelsea, \$92,000. Evenings Bob Parker at (617) 764-2015.

LOCH ALPINE — Dexter schools. Three bedrooms, fireplace, full basement, 2-car attached garage. Fantastic wooded and landscaped lot, \$43,900. Evenings Bob Myrmet at 475-1449.

ZONED LOCAL BUSINESS

Opportunity has come knocking again. Presently used for appliance repair business. Has beer and wine license available. Also plenty of living space in a 4-bedroom home. \$55,000. Evenings Ed Coy at 426-8235. x49

REAL ESTATE

WATERLOO RECREATION AREA—80 acres rolling hills and woods, \$1,000 per acre. Land contract terms.

5 BEDROOMS, two-story farm house with beautiful tall maple trees on 1 1/2 acres backing to state land, 3 minutes to town, Chelsea schools. \$27,500.

WATERLOO Recreation Area — A beautiful, rolling, 13-acre building site with hidden pond, \$1,500 per acre, land contract. Chelsea schools.

CHELSEA SCHOOLS, 2 & 10-acre bldg. sites. Bubbling stream borders one parcel near Joslin Lake. 7% land contract.

6.8 ACRES overlooking Joslin Lake. Private easement to lake. 4-in. well, 7% land contract. Chelsea schools.

NORTH TERRITORIAL ROAD, excellent 10-acre building site. Wooded. Dexter schools. Land contract terms.

1-BEDROOM starter home in Village of Munith, \$8,900 with \$1,000 down on land contract.

WATERLOO REALTY

355 Clear Lake
JOANN WARYODA, BROKER
Phone 475-8674

Evenings:
Steve Sullivan, salesman and licensed builder, 475-1743
Sue Lowe, 475-2877. x49

GARAGE & YARD SALE—Real estate items, Thursday and Friday, 10 a.m. to 5 p.m. 475-8433. x50

WANT ADS

PIANO TUNING and repair. Call Ray Hutchinson, 665-3901. x39tf
A&K MOWER SERVICE Lawn mower repairs and sharpening. Free pick up and delivery and free estimates. 2751 McKinley Rd. Ph. 475-2923 after 5 p.m. 45tf

CHELSEA

COUNTRY LIVING — 2 bedroom, dining room, 1 acre, Chelsea schools. \$22,500.

2.7 ACRES—2-bedroom home, family room, garage, outbuildings. Stockbridge schools. \$93,500.

HALF MOON LAKE—4 bedrooms, family room, 2 baths, fireplace, \$50,400. Chelsea schools.

BRICK RANCH—3 to 4 bedrooms, dining area, 1 1/2 baths, insulated and heated garage, 1/4 acre. Pinckney area.

HILLTOP VIEW from this 3-to-4-bedroom ranch, finished walk-out basement with large round fireplace, 1 acre. \$35,900.

\$23,500—3-bedroom ranch, newly decorated, Village of Chelsea.

EXTRA LARGE family home, 6 bedrooms, 3 baths, large back yard, close to Junior & High School.

\$29,500—3 bedrooms, dining room, large lot 380' deep.

FRISINGER

REALTORS
Chelsea 475-8681

Events:
Herman Koenn - 475-2613
Bob Koch 426-4754
Mary Ann Staebler - 475-1432
Paul Frisinger - 475-2631
Toby Peterson - 475-2718
Hope Bushnell - 475-7180 x49tf

Eibler & St. Amour

Realtors
8047 Main, Dexter 426-4659

3-BEDROOM home, 4 miles east of Jackson, carpeted, full basement, large lot. Mid 30's. x51

3-BEDROOM older home, Chelsea schools, large kitchen, new bathroom. x48

3 ACRES on N. Territorial Rd. Lovely ranch, attached garage, on one of the nicest lots on Territorial. x48tf

MOBILE HOME for sale—1969, 12 ft. x 60 ft., with shed, \$4,900, on lot. Call 449-4594 or 665-7530. x49

HELP WANTED — Cooks, waitresses, waiters and bus personnel. Inquire Black Sheep Tavern, Manchester. Ph. 428-7303 or 428-8921. x50

HELP WANTED—Cook for summer camp near Gregory. Apply Camp Grindly, in care of 22029 Cedar, St. Clair Shores, Mich. 48081. x50

1970 Volkswagen Squareback Station Wagon, 4-speed

\$1295

USED CARS

1973 OLDS 98 Regency 4-dr. hardtop, air cond. \$3395

1972 OLDS Vista Cruiser wagon \$2295

1972 FORD Pinto 2-dr. sedan, automatic \$1695

1971 DODGE Crestwood wagon, air cond., 23,000 miles, \$1995

1971 FORD Torino 2-dr. hardtop, 6-cylinder, 8-speed, 44,000 miles \$1195

1970 BUICK Sportwagon \$1295

1970 BUICK Electra 225 2-dr. hardtop (air cond.) \$1795

1970 BUICK LeSabre 2-dr. hardtop, air cond. \$1595

1969 OLDS Delta 88 2-dr. hardtop, 48,000 miles \$1095

1969 CHEVROLET Bel Air 4-dr. sedan, air cond. \$895

1968 OLDSMOBILE Delmont 88 4-dr. \$695

1968 CHEVROLET Impala 2-dr. hardtop, air cond. \$595

1965 BUICK Special 2-dr. sedan \$495

1965 FORD Galaxie 500 2-dr. hardtop \$195

SPRAGUE Buick-Olds-Opel, Inc. Phone 475-8604 1500 S. Main St., Chelsea 49tf

BIB OVERALLS Blue Denim, for men at DANCER'S 49

CHELSEA JAYCEES Auction - Rummage Sale Saturday, June 29 at 1 p.m. For pick-up of your items to be donated, call Norm Colby 475-7821, Mitch Zink 475-7912, Dick Call 475-2593, Jerry Kraus, 475-1686. 49tf

WANTED TO RENT—Ann Arbor executive wishes to rent a secluded country home or farm. Immediate occupancy desired. Inquiries: 475-8433. x50

WANT ADS

SMALL CAR HEADQUARTERS

NOW OPEN
SATURDAYS, 9-6
MON.-FRI., 9-9

A-1 Clean, Used Car at low, low prices

74 VEGA, Panel wagon, green with black interior, 4-speed, AM radio, luggage rack. Perfect for small business.

74 MERCURY Montego MX, 4-door, pastel lime with green interior, V-8, automatic, p.s., p.b., AM radio. Only 4,500 miles.

73 FORD Country Sedan Station Wagon, dark green metallic with matching interior, V-8, automatic, tinted glass, AM-FM stereo, rear defroster, rallye wheels, wide oval tires. Extra clean.

73 PINTO Runabout, red with black interior, 4-speed, luggage rack, AM radio.

73 NOVA SS, brown with white stripes, matching interior, V-8, automatic, p.s., p.b., air conditioning, tinted glass, AM-FM stereo, rear defroster, rallye wheels, wide oval tires. Extra clean.

72 FORD F-100, 4-wheel drive, pick-up, 360 V-8, 4-speed, locking hubs, AM radio.

HENDERSON FORD

Ann Arbor's Oldest Ford Dealer
3480 Jackson Rd., Ann Arbor
769-7900
OPEN 9 TIL 9 MON.-FRI.
SATURDAYS, 9-6 x48

FOR SALE—32-ft. Fairlane house trailer. Ph. 475-8782. 49

BABYSITTING done in my home five days a week. Any age. Ph. 475-1438. x51

FOR SALE—15 1/2 ft. fiberglass Fish 'n' fun boat, 50 h.p. Evinrude motor. Ajax tilt trailer, \$800. Call 475-2737. x49

FOR RENT—2-bedroom upstairs apartment, furnished, 5911 Madison Rd. 426-3788. x48tf

MOBILE HOME for sale—1969, 12 ft. x 60 ft., with shed, \$4,900, on lot. Call 449-4594 or 665-7530. x49

HELP WANTED — Cooks, waitresses, waiters and bus personnel. Inquire Black Sheep Tavern, Manchester. Ph. 428-7303 or 428-8921. x50

HELP WANTED—Cook for summer camp near Gregory. Apply Camp Grindly, in care of 22029 Cedar, St. Clair Shores, Mich. 48081. x50

Special of the Week

1970 Volkswagen Squareback Station Wagon, 4-speed

\$1295

USED CARS

1973 OLDS 98 Regency 4-dr. hardtop, air cond. \$3395

1972 OLDS Vista Cruiser wagon \$2295

1972 FORD Pinto 2-dr. sedan, automatic \$1695

1971 DODGE Crestwood wagon, air cond., 23,000 miles, \$1995

1971 FORD Torino 2-dr. hardtop, 6-cylinder, 8-speed, 44,000 miles \$1195

1970 BUICK Sportwagon \$1295

1970 BUICK Electra 225 2-dr. hardtop (air cond.) \$1795

1970 BUICK LeSabre 2-dr. hardtop, air cond. \$1595

1969 OLDS Delta 88 2-dr. hardtop, 48,000 miles \$1095

1969 CHEVROLET Bel Air 4-dr. sedan, air cond. \$895

1968 OLDSMOBILE Delmont 88 4-dr. \$695

1968 CHEVROLET Impala 2-dr. hardtop, air cond. \$595

1965 BUICK Special 2-dr. sedan \$495

1965 FORD Galaxie 500 2-dr. hardtop \$195

SPRAGUE Buick-Olds-Opel, Inc. Phone 475-8604 1500 S. Main St., Chelsea 49tf

BIB OVERALLS Blue Denim, for men at DANCER'S 49

CHELSEA JAYCEES Auction - Rummage Sale Saturday, June 29 at 1 p.m. For pick-up of your items to be donated, call Norm Colby 475-7821, Mitch Zink 475-7912, Dick Call 475-2593, Jerry Kraus, 475-1686. 49tf

WANTED TO RENT—Ann Arbor executive wishes to rent a secluded country home or farm. Immediate occupancy desired. Inquiries: 475-8433. x50

WANT ADS

CLOGGED SEWER

Reynolds Sewer Service

We Clean Sewers Without Digging
Drains Cleaned Electrically

FREE ESTIMATES
2-YEAR GUARANTEE
Phone Ann Arbor NO 2-5277
"Sewer Cleaning Is Our Business—Not a Sideline" 88tf

FOR SALE — 16-ft. Slick Craft boat; also Little Dude tilt trailer. Ph. 475-7387. 49

GAR - NETT'S Flower & Gift Shop

Your Friendly Florist
112 E. Middle St., Chelsea
PHONE 475-1400

Funeral Flowers
Wedding Flowers
Cut Flowers (arranged or boxed)
Potted Flowering Plants
Green Plants - Corsages
WE DELIVER x29tf

CHELSEA JAYCEES Auction - Rummage Sale Saturday, June 29 at 1 p.m. For pick-up of your items to be donated, call Norm Colby 475-7821, Mitch Zink 475-7912, Dick Call 475-2593, Jerry Kraus, 475-1686. 49tf

RN, LPN, Nurses Aide

NURSING SERVICE is the core of the new Evangelical Home, Saline. All patient units join the central nursing station with voice communication to each room.

Geriatric Nursing

needs staff who want to give quality patient care. Nurses' aide classes offered. Full or part-time positions available for both. Immediate and full employment.

All Shifts

No rotating plan.
CALL 429-9401
for applications and appointments
Mrs. Betty Kemnitz, R.N.
Director of Nursing x49

WANT ADS

SECURITY GUARDS

Chelsea, Manchester
Whitmore Lake area.
Phone 761-5515
for appointment,
or apply at
290 S. Wagner Rd.
Ann Arbor
SANFORD SECURITY SERVICE,
INC. x45tf

- YOUNG -

We list and sell lake, country and town properties. Eugene Young, Real Estate & Builder, 878-3792, 11596 Dexter-Pinckney Rd., Pinckney 48169. x34tf

Roofing, Aluminum
& Vinyl Siding
Gutters, Storms
& Window Trim

For Free Estimate
Call (517) 851-8657

Mills
Construction Co.
3886 M-52, Stockbridge. 39tf

Automotive
Rust Proofing
Cars and Trucks

Village
Motor Sales, Inc.

IMPERIAL - CHRYSLER
DODGE - PLYMOUTH
Phone 475-8661
1185 Manchester Rd., Chelsea
Hours: 8 a.m. to 6 p.m.
Tues. thru Fri. Until 9 Monday.
9 a.m. to 1 p.m. Saturday. 21tf

Plumbing, Heating &
Electrical Contracting

HILLTOP

1414 S. Main St. - Chelsea

The Day of the
Ugly Bath Is Dead!

Yesterday's most functional of all rooms in your house has been changed in ways that five years ago would have been impossible. Bathroom design has exploded in an array of dazzling colors and materials.

Come See the
Bath People!

Phone 475-2949

ESTATE—Chelsea: 3 or 4 bedroom, 1-car garage, quite new gas furnace, water softener and heater. Older home, aluminum siding, on small lot. 475-7239, or 475-8218. 50

WEDDING INVITATIONS, napkins, matches, decorations, Chelsea Card & Gift Shop, 116 S. Main St. 475-7501. 51

WANTED TO RENT — Family building in area needs 2- or 3-bedroom home. Short term lease, June to fall. (1) 651-9246. 45tf

FOR SALE—Feeder pigs. Ph. 475-1968, after 7 p.m. 45tf

MOVING SALE — Saturday and Sunday, May 25-26, 10 a.m. to 5 p.m. beds, tables, chairs, Hide-A-Bed sofa, Kenmore deluxe washing machine, large desk, children and adult clothes, coats, boots, water skis, much more. 1304 Ridge Rd., Cavanaugh Lake. x49

WANT ADS

ANTIQUE BRASS BED Wanted—
Phone 682-0524.

LEHMAN WAHL

Land Appraisal
Residential
and Farm
17087 West Austin Rd.
Manchester, Mich.
Area Code 813
428-8886

CALL FRANK for all your carpet cleaning jobs, morning or weekend. Needs only 3 hours to dry. Only 10¢ per square foot. Phone now for free estimate, 761-4928. All work guaranteed. 33tf

Fireplace Builder

Field stone mason, block and brick mason, tuck pointing.
FREE ESTIMATES
Call 475-8025 after 3 p.m.

Patrick Grammatico
x40tf

HAMMOND ORGAN teachers wanted to teach in their own homes. Call Grinnell Brothers, Ann Arbor, 662-5667. 34tf

COUNTRY AUCTION

ANTIQUES HOUSEHOLD
1-HORSE CUTTER

Having sold our farm, we will sell the following at public auction, located at 20486 Bethel Church Road, Manchester, Michigan, Take M-52 to Bethel Church Road then east ½ mile on Bethel Church to Parr.

Sunday, May 26
at 1:00 p.m.

Antique ice box (nice), brass scales, 15-gal. copper kettle, apple butter paddle, broad axe, portable sewing machine, small oak table with ball and claw feet, old dishes, picture frames, old books, ironstone platter, food grinder, oak kitchen chairs, linens, kitchen utensils, straight razors, book stand, 2 baby cribs, 2 stoves, oak chest of drawers with mirror, maple dresser, ornate walnut hall mirror, oak bookcase desk with glass door, Enders Royal double barrel shotgun with hammers (muzzle loader), Remington Model 10 12-gauge shotgun, Savage 22 octagon barrel (parts), black and white television, oak buffet, mirrors, Rayo lamp, antique typewriter, old canes, hump back trunk, antique miniature doll dresser and chest of drawers, several old beds, antique brass bed, fruit jars, crock butter churn, 10 large crocks and jugs, copper boiler, cast iron boiler, round meat block, floor scrubber, cream separator complete and works good, hand corn planters, coal scuttle, ice tongs, blacksmith vise, pulleys, old chairs, antique pipe wrench, old fence stretcher, canthook, cross-cut saw, milk cans, garden tools, 2 platform scales, Wetmore hammermill, 1-horse cutter (sleigh) in good shape.

Many more items not listed.

MR. AND MRS. HOWARD BELL,
OWNERS

Auctioneers

Lloyd R. Braun — Ann Arbor
665-9646

Jerry L. Helmer — Plymouth
453-4109

Inspection Day of Sale

Terms: Cash or Check
Nothing removed until settled for.
Not responsible for accidents.
Lunch on Grounds. x49

WOULD LIKE to babysit during summer vacation in my home. Preferably school-age children. Have references. Ph. 475-2943. 50

LOST—2 male, full-grown Brittany dogs, in Cavanaugh Lake-Crook-Lake area. Reward, Ph. 475-8786 or 475-2731. 49

WANT ADS

NOW

Full Time
Complete
Body Shop
Service

Stop in For An Estimate

PALMER FORD

222 S. Main St.
475-1301 27tf

CUSTOM

BUILDING

LICENSED & INSURED
FREE ESTIMATES

TOTAL

CONSTRUCTION

SERVICES

—Residential, commercial and industrial

—Garages

—Remodeling - Additions

—Aluminum Siding

—Roofing

—Trenching

SLOCUM

CONTRACTORS

& BUILDERS

Serving Washtenaw County

For Over 20 years

20700 OLD US-12

CHELSEA

Phone 475-8321 or 475-7611

22tf

Pine Haven Saddlery

4534 Dexter Townhall Rd.
Phone Dexter 424-4268

Complete line of English and Western equipment. 10% discount to all 4-H club members.

Store Hours: Mon.-Sat., 9-9
Sunday, 10-9

x52tf

NEW AND REMODELING

Residential

Carpenter Contractor

M. A. LAWRENCE

1-517-522-4364 x7tf

BUILDERS—House and barn roof-
ing, all types of roof repairs,
aluminum storm windows and
doors, aluminum siding and gut-
ters, awnings, porch enclosures,
garage and room additions, ce-
ment work. Call Joe Hayes for
free estimates, Manchester 428-
8520. x16tf

Sand Gravel

KLINK

EXCAVATING

Bulldozer - Backhoe
Road Work - Basements
Trucking - Crane Work
Top Soil - Demolition
Drainfield - Septic Tank
Trenching, 5" up

Industrial, Residential, Commercial
CALL 475-7631 13tf

Headquarters for

RED WING

WORK SHOES

Foster's Men's Wear

40tf

MUNITH AUCTION—100 Main St.,
Munith, Mich. Auction every
Sunday, 6 p.m. Danny Fleming,
auctioneer. x12tf

STOCKBRIDGE, 13 acres, commer-
cial, on M-52. (517) 851-8144. 55tf

Fry Cook Wanted

11 a.m. to 5 p.m.

See Mrs. McMillan at

Chelsea Restaurant

from 8:30 a.m. - 1:30 p.m.,
or after 5 p.m. 87tf

FOR SALE—1973 Ford, air, load-
ed. Have to sell. Ph. 475-2924. 49

DAVE'S

SIDING CO.

Free estimates on aluminum sid-
ing and custom trim, aluminum
gutters, doors and windows.

Call Gregory 498-2423

Gregory, Mich. 49tf

1973 DODGE DART, 4 speed, rat-
tly pack, 9,000 miles. Call 475-
7449, after 6 p.m. x49

WANT ADS

BEAUTICIAN WANTED, Mr.
Ken's. Ph. 428-8669. x50

WHY RENT when you can own
your own trailer lot. These are
large lots, utilities and black-top
roads, 22 miles west of Ann Ar-
bor, 3 miles off I-94, \$3,500 cash.
Ph. (313) 229-6657 after 6 p.m. 49

CARPENTER—Remodeling, addi-
tions and home building. Ph.
426-4017. x47tf

Gem Travel Trailers
and Campers

PICK UP COVERS

4" ————— \$100.00

26" ————— \$179.00 and up

Triangle Sales

Chelsea 475-4802 40tf

CAR RENTAL by the day, week-
end, week or month. Full insur-
ance coverage, low rates. Call Lyle
Christwell at Palmer Motor Sales,
475-1801. 25tf

FOR RENT — American Legion
Hall, \$50. Call 475-1824. 30tf

SHOES FOR REPAIR picked up
and delivered every Saturday at
Parish's Cleaners, 113 Park St.,
Chelsea, Mich. x16tf

D&G Allen Excavating

Septic Tanks and Drainfields

Back Hoe and Dozing

Sand, Gravel and Topsoil Hauler

Phone (517) 851-8386

or (517) 851-8278

43tf

OFFICE SPACE for rent, Merkle

Home Furnishings. Ph. 475-8621. 30tf

FOR SALE—1971 Ford 4-door sed-
an, loaded with extras. Well
maintained and driven discreetly.
Come see and make an offer. Call
Clint Melvin at 475-8633. 40tf

CHUCK SELESKA — Bulldozing,
backhoe, trucking. Reasonable
prices. Call after 5:30 p.m. 428-
4746. x51

Complete

Body Repair

Service

Bumping - Painting
Windshield and Side Glass
Replacement

Free Pick-up & Delivery
Open Monday Until 9

CONTACT DON KNOLL
FOR FREE ESTIMATE

Village

Motor Sales, Inc.

IMPERIAL - CHRYSLER
DODGE - PLYMOUTH

Phone 475-8661

1185 Manchester Rd., Chelsea

Hours: 8 a.m. to 6 p.m.

Tues. thru Fri. Until 9 Monday.

9 a.m. to 1 p.m. Saturday. x40tf

GEORGE W. SWEENEY

HEATING

LICENSED CONTRACTOR

Furnaces, Air Conditioning,
and Sheet Metal Work.

Phone 475-1867

-50

REAL ESTATE

JUST LISTED—A new 4-bedroom
home. 2½ baths, family room
and fireplace, fully carpeted. Set-
ting on 10 acres. Located on Grass
Lake Rd.

THINKING OF BUILDING? We
have several parcels to choose
from. 2½ acres on up to 91, some
with streams, trees, wood, and
great views. Call for more infor-
mation.

BEAUTIFUL Country Living. 160-
acre farm in Irish Hills, with
new 72 ft. x 56 ft. pole barn, sev-
eral out-buildings. You will enjoy
the charm of this 2-story country
home with 5 bedrooms, 2 baths,
and beautiful scenery. Possibility
of an addition. On 209 acres.

For more information call

Spear & Associates,

Inc.

REALTORS

122 W. Main St., Manchester

Phone 428-8888

Evenings and Week-ends, call

Ellis Pratt 428-8562

Maria Lehr 428-8182

Tina Cotton 428-7143 49

The

BARGAIN FLOOR

Is Loaded

1/3, 1/2 and more off

DANCER'S

40

FOR SALE — Built-in electric
oven-rang, \$30. 19" portable TV
with stand, \$30. Bathroom sink, \$7.
Call 475-2831. x49

3000 FORD TRACTOR with a 6-ft.
tall mower, 75 hrs. Power steer-
ing, like new. Ph. 429-7770. x49

WANT ADS

ELECTRICAL WIRING of all
types New and rewiring. Ph. 428-
4855. x20tf

EVINGER REAL ESTATE, Alpine
St., Dexter. Phone 424-5518. x15tf

SEE US for transit mixed con-
crete. Klump Bros. Gravel Co.
Phone Chelsea 475-2530, 4920 Love-
land Rd., Grass Lake, Mich. x40tf

TRAVEL TRAILERS — 13-ft. and
up; 10x55 ft. trailers. John R.
Jones Trailer Sales, Gregory, Mich.
Phone 498-2655. 43tf

WANTED — Carpentry work, any
type. Charles Romine. Ph. 475-
7474. 35tf

TUTORING

Reading and math, by State of
Michigan, qualified reading
teacher. Summer vacancies. "A
learning situation tailored to suit
your individual needs." Call Mrs.
Sandra Peterson, 475-2718. x49

PIANO TUNING, Chelsea and area.
Facilities for reconditioning and
rebuilding. Used piano sales; re-
conditioned grands and verticals.
E. Ecklund. 428-4428. x50tf

ASPHALT PAVING

Driveways - Parking Areas
Landscaping - Site Work

PREVO EXCAVATING CO.
(517) 851-8608 or (313) 453-1027

x45tf

FOR SALE — Indian cents, post-
card, books, foreign coins,
Australian opals, and other arti-
cles. Lawrence E. Guinan, 1571
Sugar Loaf Lake. Call 475-2317.
x27tf

FOR SALE—Phillip Carey roof-
ing shingles, \$9 per square (4
squares available, tan). R. Laban,
475-2362, after 5:30. x40tf

SEAMLESS ALUMINUM EAVES-
TROUGHING—White & brown.
Wilson Metal Shop, Manchester.
428-8468. x43tf

SEAMLESS ALUMINUM Eaves-
trouchs installed and guaran-
teed. White and colors available.
For free estimates, call Rick Klein-
schmidt, R. D. Kleinschmidt Co.,
428-8838. x45tf

DECORATED CAKES for all oc-
casions, wedding cakes delivered.
Ph. 475-2403. x47tf

WEDDING INVITATIONS, nap-
kins, matches, decorations, Chel-
sea Card & Gift Shop, 116 S. Main
St. 475-7501. 51

Ladies, Girl's

Boys', Men's

SWIM WEAR

Buy now while
the selection
is good.

DANCER'S

-49

WATERLOO

GARAGE

15615 Clear Lake Rd.

OPEN 7 DAYS A WEEK

Bottle Gas

White Gas

75 Worms 50c

Crawlers 50c a doz.

Ice 89c 52

QUALITY PAINTING — Interior
and exterior, free estimates.
Phone evenings, George Moylan,
668-7091. x50

FOR SALE — Allis-Chalmers roto
baler, good condition, \$750. Fer-
ris Caskey, 109 Main St., Gregory.
x50

FOR SALE — Yellow couch and
2 green chairs. Ph. 475-1209. x49

CLEAN RUGS, like new, so easy
to do with Blue Lustre. Rent
electric shampooer, \$1. Dancer's
x49

WANT ADS

FOR REAL DOLLAR SAVINGS
be sure and see us before you
buy any new or used car. Palmer
Motor Sales, Inc. Your Ford Deal-
er for over 50 years. 25tf

DEPENDABLE TREE SERVICE—
Cutting and removing. Call 426-
4110. x19tf

ALCOA SIDING SPECIALIST —
Since 1938. Aluminum combina-
tion and regular (in colors). Wil-
liam Davis. Ph. 663-6635. x11

Gentle Ben's

Paper Recycling

To save a tree bundle your news-
papers and magazines, leave
them on your front porch every
Monday before 9 a.m. to be picked
up for recycling. Residents with-
in Chelsea Village Limits only. If
you live outside the village call
for an appointment, 475-1831. 52

HEALTHY, RED RASPBERRY
plants—Dig your own, 10 for
\$1. Also, Rose of Sharon, Satur-
day, June 1 only, at 17376 Water-
loo Rd. 49

70 TORINO GT, sharp sporty look-
ing, all new tires,



MANCHESTER'S EXCHANGE PLACE DAM will be one of the stops on the annual Washtenaw Historical Society Tour, scheduled for Saturday, June 8. First stop on the tour will be Hastings, the farm home of former Michigan Governor John Swainson and his wife. Next, the group will visit the Catholic church, the Township Library (Michigan's oldest), Fountain House, Mann Mill, and then

adjourn to dinner in the the Black Sheep Tavern in Manchester. For ticket information and reservations, call 663-5098. The public is urged to make reservations early, as last year's tour was extremely well-attended. The tour will begin from Ann Arbor Federal Savings parking lot, E. Liberty and S. Division Sts., Ann Arbor, at 1 p.m.

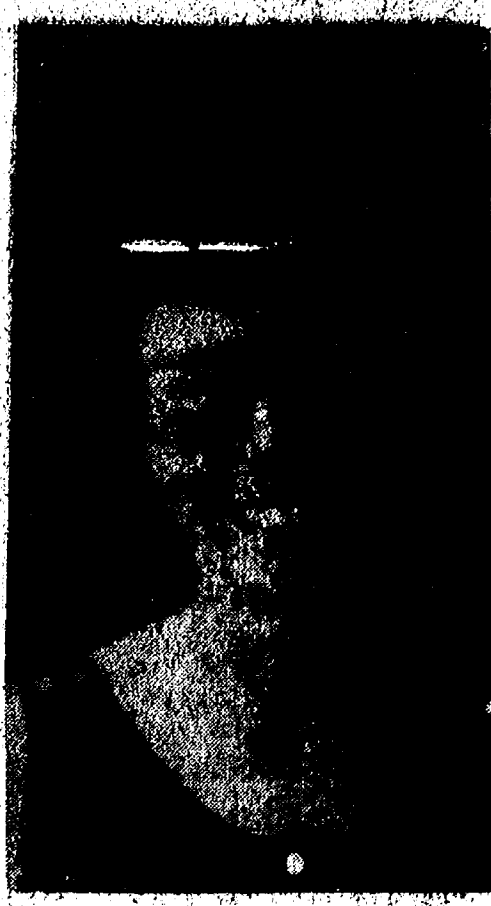
'Honest' Thief Admits to Gas Theft

A relatively straightforward thief, no doubt an uncommon thing in the world of crime, showed up in Chelsea early last Friday morning.

While on routine patrol of Chelsea High school parking lot, Officers Peebles and Browning spotted a man running between buses and hopping into his car. Officers, approaching his car to question him, noted three one-gallon containers, full of gas, another three empty containers, one gas funnel, and a plastic hose. Asking the obvious question—exactly what was he doing—the suspect replied that he was stealing gas.

At that point officers informed the man, Larry J. Alexander, 26, of Detroit, of his Miranda rights. According to the officers' report, however, he still wanted to tell us that he had stolen the gas. Alexander was placed under arrest and taken to Washtenaw County Jail where he was booked on a charge of larceny with value less than \$100.

He appeared in 14th District Court Friday and was fined \$50 and placed on six months probation. The gasoline was turned over to Chelsea School District Bus Supervisor Ralph Brier.



MRS. THOMAS ROBERTS

Area Resident Named to Huron Watershed Council

Mrs. Catherine Roberts of Freedom Township has been appointed alternate to the Huron River Watershed Council. Her appointment fills a long-standing vacancy. Former County Treasurer Sylvester Leonard was also nominated. Mrs. Roberts is secretary, board member and a founder of the Washtenaw County Lake & Streams Association and a board member of the Pleasant Lake Property Owners Association.

A medical technologist employed by the Chelsea Medical Center, she also serves on the Board of Christian Education of Bethel church and formerly served on the Manchester Co-op Nursery Board. Other activities have included March of Dimes and Red Cross work. She is also active in the Pleasant Lake School volunteer program.

Mrs. Roberts lives with her husband, area businessman Thomas S. Roberts, and their daughter, Jessica at 11485 Pleasant Shore Dr.

Urbanites subjected to seemingly endless crescendo of jack hammers, pneumatic drills, subways, sirens, airplanes and automobile traffic face a noise pollution health threat as serious and far-reaching as air and water pollution, hearing specialists report. Government estimates conclude 40 million people already are exposed to noise levels potentially damaging to their hearing ability and another 14½ million have hearing loss problems serious enough to warrant medical attention or hearing amplification.

The Veterans' Administration reports that there were more than 29 million veterans living in the United States in September 1973. The average age for all veterans was 45 years.

4-H Looking for Bike Leaders

"Almost every kid has a bike, and about only 1 percent has a cow. Therefore, 4-H is putting added emphasis this spring on the bike as a vehicle to youth development," according to Duncan R. Sanford, Extension 4-H Youth Agent.

As all bike enthusiasts know, bicycling has tremendous potential for positive personal development, exercise, fresh air, conservation of energy, anti-pollution, socializing, repair and maintenance, etc.

4-H would like to establish several 4-H youth bicycle clubs in Washtenaw county this spring and summer. Volunteers are needed to help form bike clubs. A person should be able to spend a couple of hours a week helping 10-12 kids learn bike repair, safety and to have fun on rides.

Bicycling in 4-H is great family fun. The entire family may want to join. 4-H has basic guide materials

and will co-ordinate with various group leaders to plan and conduct rides and county events for all bike clubs. For further information contact Duncan Sanford at 663-7511, ext. 227.

MARSHALL TRUCKING

**DRAG LINE - BACK HOE
SAND - GRAVEL - LIMESTONE
WASHED STONE**

**Immediate Service
FREE ESTIMATES**

Call 428-8123, evenings 665-6521

CHELSEA VILLAGE COUNCIL PROCEEDINGS

Regular Session.

This meeting was called to order at 7:30 p.m. by President Pennington. Present: President Pennington, Administrator Weber, Clerk Keezer, Trustees Wood, Galbraith, Dmoch, Gorton, Johnson, Borton.

Others present: Stanley Pickell, LaVern Smith, Faye Smith, Rose Ann Gimney, Mary Lou Bauer, Leroy Bauer, Ray Knickerbocker, Dan Schnalder, Viola Knoll, Rosemary Harok, Sue Wood, Barbara Gorton, John C. Dettling, George Winans, Nanja Faust, Norman Quakenbush, Bill Green, Sherry Hughes, Ethel Williams, Larry Bice, Leonard McDougall, Larry Yager, George Meranuck, Keith Boylan, Jim Grau, Clark Bushnell. A public hearing was held regarding the 1974-75 Budget. Motion by Dmoch, supported by Wood, to accept the budget in the millage factor to be determined amount of \$496,105.00 with the dependent on assessed county valuation. Roll call: Yeas: Borton, Johnson, Dmoch, Galbraith, Wood, Nays: Gorton. Motion carried. A request was received from Mr. Pickell of Dexter regarding a cab

service in Chelsea. No action was taken at this time.

Council heard comments of visitors regarding the dog problem. Norman Quakenbush, representing the Washtenaw Association of Retarded Children, addressed the Council regarding Boarding Homes in a residential district. No action was taken at this time.

Jim Grau made a report on the Sewer Trunk Expansion Program (5) day notice on clean-up on lot. Motion by Dmoch, supported by Johnson, to give contractor five (5) day notice on the Filter Backwash Water matter.

Roll call: Yeas all. Motion carried. A request was received from Aram Walker, 247 Washington St. for a variance to Section 3.03 (e) of Ordinance No. 55 to allow him to leave his fence as it is.

Motion by Dmoch, supported by Wood, to forward request to Planning Commission for recommendation. Roll call: Yeas all. Motion carried.

Request from North American Rockwell for renewal for a one year period, effective June 15, 1974. The Permit for Discharge of Rinse Waters from Phosphate Line to Village Sewer System.

Motion by Wood, supported by Johnson, to approve said request. Roll call: Yeas all. Motion carried.

Motion by Borton, supported by Johnson, to adopt a resolution to accept the 1974-75 Municipal Maintenance Contract between the Michigan State Highway Commission and the Village of Chelsea; to designate Frederick Weber as Maintenance Superintendent to Section M0052 of State Trunkline M-52; and authorize the Village President to sign said contract in behalf of the Village of Chelsea. Roll call: Yeas all. Motion carried.

Letter was received from Wallace Wood regarding delinquent 1973 Personal Property taxes in the amount of \$24.38.

Motion by Gorton, supported by Wood, to authorize the Village Administrator to draw a check from the General Fund in the amount of \$24.38 to pay said tax. Roll call: Yeas all. Motion carried.

Review was made of the Village Personnel Policies.

Motion by Wood, supported by Galbraith, to amend our Personnel Policies to include all State and Federal requirements. Roll call: Yeas all. Motion carried.

Motion by Dmoch, supported by Johnson, granting approval to transfer \$20,000.00 from the Electrical Fund to General Fund with same sum to be repaid upon receipt of 1974 Village Taxes. Roll call: Yeas all. Motion carried.

Various committee reports were given.

Motion by Dmoch, supported by Borton, to set the price of rental on the Village house on West Middle St. at \$225.00 per month, tenant to pay utilities. Roll call: Yeas all. Motion carried.

Motion by Dmoch, supported by Johnson, to have Planning Commission study previously enacted upon rezoning request and to forward recommendation to Council. Roll call: Yeas all. Motion carried.

Motion by Gorton, supported by Galbraith, to adjourn. Roll call: Yeas all. Motion carried. Meeting adjourned.

Loren Keezer, Village Clerk.

THE SEA LAMPREY?

The sea lamprey, an eel-like fish that sucks the blood of its victims, sometimes will fasten on swimmers. Unlike leeches, however, lampreys apparently are repelled by warm-blooded animals and invariably let go. There is no record of a lamprey harming a human.

While everyone should have their hearing tested annually to prevent an undetected hearing loss, persons working in noisy environments should have their hearing tested at more frequent intervals to be certain a hearing loss does not go undetected, hearing specialists urge.

Servicemen's Corner

A-1c Lawrence Gorton Graduates With Honors In Electronics Course

Biloxi, Miss.—Airman First Class Lawrence E. Gorton, son of Mr. and Mrs. Eldon C. Gorton of 765 Taylor St., Chelsea, Mich., has graduated with honors at Keesler AFB, Miss., from the Air Training Command's basic course for electronic specialists.

The airman, who received instruction in communications and electronics systems principles, is remaining at Keesler for advanced training.

Airman Gorton, a 1971 graduate of Chelsea High school, attended the University of Michigan. His wife, Gayle, is the daughter of Charles B. Winans of 750 Book St., Chelsea.

Grass Lake Area Youth Completes Air Force Electronics Course

Biloxi, Miss.—Airman First Class Thelma W. Frey, son of Mr. and Mrs. Gerald Frey of 15356 Kendall Rd., Grass Lake, Mich., has graduated at Keesler AFB, Miss., from the Air Training Command's basic course for electronic specialists.

The airman, who received instruction in communications and electronics systems principles, is remaining at Keesler for advanced training.

Airman Frey is a 1972 graduate of Manchester High school.

Manchester Youth Completes Basic Training in Air Force

San Antonio — Airman Donald J. Litwin, son of Mr. and Mrs. Lewis Litwin, 7251 Pierce Rd., Manchester, has been assigned to Pope AFB, N. C., after completing Air Force basic training.

During his six weeks at Lackland AFB, Tex., he studied the Air Force mission, organization, and customs and received special instruction in human relations.

Airman Litwin has been assigned to a unit of the Tactical Air Command for further training and duty as a metal working specialist.

He graduated last year from Manchester High school and attended Jackson (Mich.) Community College.

PACKAGED FOODS

Of the 8,000 or more items in a supermarket today, half or more are packaged foods.

ROCKCRETE PRODUCTS

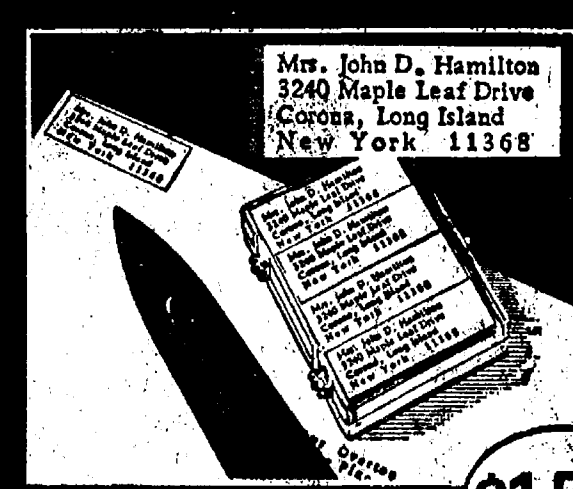
TRANSIT - MIXED CONCRETE

WASHED SAND & STONE - ROAD GRAVEL
LIMESTONE

Rite-Way Mixers

475-2848

6991 CHELSEA-MANCHESTER RD., MANCHESTER



1000
Bolind
GILT EDGE
personal
address
labels

\$1.50

• UP TO 26 SPACES PER LINE
• UP TO 4 LINES • PACKED
WITH PLASTIC BOX

— NOW AVAILABLE AT —
THE CHELSEA STANDARD

PLANNED USE REPORT
GENERAL REVENUE SHARING

General Revenue Sharing provides federal funds directly to local and state governments. The law requires each government to publish a report of its plan for the use of these funds to inform its citizens and to encourage their participation in deciding how the money should be used.

CATEGORIES	AMOUNT	PERCENTAGE
Local Rd.	\$650	
2. ENVIRONMENTAL PROTECTION		
3. PUBLIC TRANSPORTATION		
4. RECREATION		
5. PARKS		
6. SOCIAL SERVICES FOR AGED AND YOUNG		
7. FINANCIAL ADMINISTRATION		
8. MULTIPURPOSE AND GENERAL GOV.		

THE GOVERNMENT OF
LINCOLN TOWNSHIP

ANTICIPATING A GENERAL REVENUE SHARING PAYMENT OF \$650.

PLANS TO SPEND THESE FUNDS FOR THE PURPOSES SHOWN

ACCOUNT NO. 23 3 001 000

LINCOLN TOWNSHIP
TOWNSHIP TREASURER
WASHTENAW COUNTY
15000 S. 10 CHURCH RD
CHELSEA, MICH 48106

(I) The Treasurer has been advised that a copy of this report has been published in a local newspaper of general circulation. I have retained documents of the report and they are open for public scrutiny at 15000 S. 10 Church Rd., Chelsea, Mich.

(II) ASSURANCE (Under Instruction 5)

I, the Treasurer of the Township, have the honor to certify that the foregoing report has been published in a local newspaper of general circulation. I have retained documents of the report and they are open for public scrutiny at 15000 S. 10 Church Rd., Chelsea, Mich.

BRITISH TRIMS

HAGGAR
slacks

Express yourself in Marrakesh

It'll only cost you \$14 when you slip into Marrakesh Squares by Haggar® Bold, multicolored squares that twist on a white linen-like background. In Wide Trak® styling with wide belt loops and bold cuffs. Machine washable in an easy-care Forever-Prest® blend of Fortrel® polyester and combed cotton. Only \$14. Terrific!

Strieter's Men's Wear

Fortrel® is a trademark of Fiber Industries, Inc.

THE CITIZENS BANK OF SALINE PRESENTS

ON A 48 MONTH CERTIFICATE OF DEPOSIT

EXAMPLE: DEPOSIT \$5,000 AND YOU RECEIVE AN INTEREST CHECK FOR \$91.44 QUARTERLY FROM THE CITIZENS BANK OF SALINE.

YOU CAN OPEN YOUR 7% CERTIFICATE OF DEPOSIT AT BOTH CONVENIENT LOCATIONS OF THE CITIZENS BANK OF SALINE, 100 WEST MICHIGAN AVENUE IN DOWNTOWN SALINE OR 4997 SALINE ANN ARBOR RD.

FEDERAL REGULATIONS REQUIRE SUBSTANTIAL INTEREST PENALTY FOR EARLY WITHDRAWALS FROM CERTIFICATE SAVINGS DEPOSITS.

THE CITIZENS BANK OF SALINE

(Member F.D.I.C.)

+ Services in Our Churches +

ST. PAUL UNITED CHURCH OF CHRIST

The Rev. John Rinehart,
Interim Pastor

Thursday, May 23—

Confirmation night and reception.

Friday, May 24—

Senior Youth Fellowship's Tower Hill retreat begins.

Saturday, May 25—

No confirmation class.

Sunday, May 26—

9:00 a.m.—Communion Class.

9:00 a.m.—Church school.

10:30 a.m.—Worship service.

Courier articles due.

Tuesday, May 28—

6:30 p.m.—Courier Mailing Committee.

Wednesday, May 29—

3:30 p.m.—Junior Choir.

7:30 p.m.—Chancel Choir.

ST. JOHN'S EVANGELICAL AND REFORMED CHURCH

(United Church of Christ)

Francisco

The Rev. J. P. Goebel, Pastor

Every Sunday—

9:00 a.m.—Adult Bible study.

10:00 a.m.—Regular worship service and Sunday school.

NORTH LAKE UNITED METHODIST CHURCH

The Rev. J. William Todd, Pastor

Every Sunday—

9:45 a.m.—Worship service.

11:00 a.m.—Sunday school. Nursery available.

Every Wednesday—

4:00 p.m.—Children's Choir.

7:00 p.m.—Adult Choir.

WATERLOO FIRST UNITED METHODIST

Parks and Territorial Rds.

The Rev. Altha Barnes, Pastor

Every Sunday—

9:15 a.m.—Morning worship.

CHELSEA MEDICAL CENTER

Every Other Wednesday—

1:30 p.m.—Worship service.

WATERLOO VILLAGE UNITED METHODIST CHURCH

818 Washington St.

The Rev. Altha Barnes, Pastor

Every Sunday—

10:00 a.m.—Sunday school.

CHURCH OF JESUS CHRIST OF LATTER-DAY SAINTS

Meetings at

St. Barnabas Episcopal Church

20500 Old US-12

Every Sunday—

11:00 a.m.—Priesthood meeting.

12:30 p.m.—Sunday school.

5:30 p.m.—Sacrament meeting.

SALEM GROVE UNITED METHODIST CHURCH

3320 Notten Rd.

The Rev. J. William Todd, Pastor

Every Sunday—

10:00 a.m.—Sunday school.

11:00 a.m.—Worship service.

IMMANUEL BIBLE CHURCH

145 E. Summit St.

The Rev. LeRoy Johnson, Pastor

Every Sunday—

9:45 a.m.—Sunday school, nursery provided.

11:00 a.m.—Morning worship, nursery provided.

7:30 p.m.—Family hour, prayer meeting and Bible study.

First Sunday of Month—

7:00 p.m.—Communion service.

10:00 a.m.—Sunday school.

FIRST UNITED PRESBYTERIAN CHURCH

Unadilla

The Rev. T. H. Liang

Every Sunday—

9:45 a.m.—Sunday school.

11:00 a.m.—Worship service.

NORTH SHARON BIBLE CHURCH

Sylvan and Washburne Rds.

The Rev. William Enslen, Pastor

Every Sunday—

10:00 a.m.—Sunday school.

(Nursery will be available.) Junior church classes.

11:00 a.m.—Worship service.

6:00 p.m.—Senior High Youth meeting. Youth Choir.

7:00 p.m.—Evening worship service. (Nursery available.)

Every Wednesday—

7:00 p.m.—Bible study and prayer meeting. (Nursery available.)

Bus transportation available: 428-7222.

FIRST UNITED METHODIST CHURCH

The Rev. Clive Dickins, Pastor

Saturday, May 25—

10:00 a.m.—Cherub Choir.

10:30 a.m.—Junior Choir.

Sunday, May 26—

9:00 a.m.—Church school.

10:00 a.m.—Worship service.

Wednesday, May 29—

7:00 p.m.—Membership - Instruction Class, in the Educational Unit.

8:00 p.m.—Chancel Choir.

Thursday, May 30—

1:00 p.m.—Literature Group, home of Mrs. Fred Harris.

CONGREGATIONAL CHURCH (United Church of Christ)

The Rev. Carl Schwarm, Pastor

Sunday, May 26—

10:00 a.m.—Sunday school.

11:00 a.m.—Worship service.

Commentary articles due.

Coffee hour, altar and sacraments.

OUR SAVIOR LUTHERAN CHURCH

The Rev. William H. Keller, Pastor

1515 S. Main, Chelsea

Every Sunday—

9:00 a.m.—Sunday school.

9:00 a.m.—Adult Bible class

10:30 a.m.—Worship service.

ST. MARY CATHOLIC CHURCH

The Rev. Fr. David Philip Dupuis

Pastor

Mass Schedule

Every Saturday—

4:00-5:00 p.m.—Confessions.

7:00 p.m.—Mass.

Immediately after 7 p.m. Mass—

Confession.

Every Sunday—

Winter schedule

8:00, 10:00, 12:00 noon—Mass.

Summer schedule

7:00, 9:00, 11:00 a.m.—Mass.

ST. JACOB EVANGELICAL LUTHERAN CHURCH

12501 Riethmiller Rd., Grass Lake

The Rev. Andrew Bloom, Pastor

Every Sunday—

9:00 a.m.—Worship service.

10:15 a.m.—Divine services.

CHURCH OF CHRIST

13681 Old US-12, East

David A. Rushlow

Every Sunday—

10:00 a.m.—Church school.

11:00 a.m.—Worship service.

Nursery will be available.

6:00 p.m.—Worship service.

Every Wednesday—

7:30 p.m.—Bible study.

BAHA'I FIRESIDE

Every Thursday—

8:00 p.m.—At the home of Toby

Peterson, 705 S. Main St. Anyone

wishing to learn about the Baha'i

faith is welcome.

FIRST ASSEMBLY OF GOD

The Rev. Thode B. Thodeson

Pastor

Every Sunday—

9:45 a.m.—Sunday school.

11:00 a.m.—Worship service.

6:00 p.m.—Youth service.

7:00 p.m.—Evangelistic service.

Every Tuesday—

9:30 a.m.—Ladies Bible study.

Every Wednesday—

7:00 p.m.—Midweek services.

ST. JOHN'S (UNITED CHURCH OF CHRIST)

Rogers Corners

The Rev. Richard Campbell, Pastor

Every Sunday—

10:00 a.m.—Sunday school.

11:00 a.m.—Worship service.

CHELSEA BAPTIST CHURCH

337 Wilkinson

The Rev. James Stacey, Pastor

Every Sunday—

9:45 a.m.—Sunday school.

11:00 a.m.—Worship service.

Nursery care available during all

services.

6:00 p.m.—Junior and Senior

Baptist Youth Fellowship.

7:00 p.m.—Evening service.

Every Wednesday—

7:00 p.m.—Bible study and

prayer meeting.

BETHEL EVANGELICAL AND REFORMED CHURCH

(United Church of Christ)

Freedom Township

The Rev. Roman A. Reineck

Every Sunday—

10:00 a.m.—Worship.

ST. THOMAS EVANGELICAL LUTHERAN

Ellsworth and Haab Rds.

The Rev. Daniel L. Mattson, Pastor

Thursday, May 23—

8:00 p.m.—Men's Bible Study at

Mattsons.

Sunday, May 26—

9:45 a.m.—Sunday school and Bi-

ble class.

11:00 a.m.—Worship service.

Wednesday, May 29—

10:00 a.m.—Women's Bible Study.

8:30 p.m.—Choir rehearsal.

ZION LUTHERAN CHURCH

Corner of Fletcher, Waters Rds.

(Rogers Corners)

The Rev. John R. Morris, Pastor

Thursday, May 23—

4:00 p.m.—Eighth grade youth in-

struction.

Saturday, May 25—

Youth instruction classes.

Sunday, May 26—

9:00 a.m.—Sunday school.

10:15 a.m.—Worship service.

Monday, May 27—

Junior Choir only.

Michigan District Convention be-

gins at Western Michigan Univer-

sity in Kalamazoo.

ST. BARNABAS EPISCOPAL CHURCH

20500 Old US-12

The Rev. C. Walton Fitch, Vicar

Telephone 426-8815

Every Sunday—

9:15 a.m.—Holy Communion, first

third, and fifth Sundays.

9:15 a.m.—Morning Prayer, sec-

ond and fourth Sundays.

9:30 a.m.—Sunday school.

10:15 a.m.—Choir rehearsal.

GREGORY BAPTIST CHURCH

The Rev. Paul White, Pastor

Every Sunday—

10:00 a.m.—Worship.

11:10 a.m.—Sunday school.

7:00 p.m.—Evening worship

service.

7:30 p.m.—Thursday mid-week

service.

FIRST CHURCH OF CHRIST, SCIENTIST

1883 Washtenaw Ave., Ann Arbor

Every Sunday—

10:30 a.m.—Sunday school;

morning service.

METHODIST HOME CHAPEL

The Rev. R. L. Clemans, Pastor

Every Sunday—

8:45 a.m.—Worship service.

Sharon Church

Plans Balloon

Ascension

If you think you see the air full

of round objects on May 26, don't

worry. It's not an invasion from

outer space. In honor of Ascension

Sunday, the young people of North

Sharon Bible church will release

600 helium filled balloons. As they

watch the balloons ascend, they

will recall how Jesus ascended into

Heaven, with the promise that He

would come again.

Each balloon will be accompanied

by a Gospel message and the name

of the sender, requesting anyone

who finds it to write. In previous

years, North Sharon balloons have

been picked up in Ohio and New

York. One was retrieved by a

fishing boat in Lake Erie.

Sharon School

Decides on

Name, Grades

Will Minister To the Deaf

North Sharon Bible church, Sylva and Washburn Rds., is planning to launch a ministry to the deaf. Three young adults from the church, Paula Howard, Nancy McAtee and Mark Heard, will attend the School of Deaf Interpretation held at the Bill Rice Ranch in Tennessee, May 19-24, to learn sign language. The three have already mastered the alphabet and numbers through individual study.

Immediately after the school, Bill Rice, III, will be conducting a week of evangelistic services at the church, 7 p.m. nightly, May 25 to June 2. His wife will interpret all of those meetings for the deaf. During the summer, the Rice minister at the Bill Rice Ranch, the world's first and largest ministry to the deaf.

"We want to interpret all the main services of the church for the deaf because," Pastor Bill Rice explained, "The Gospel is for everyone." As soon as there is enough interest, we will add one or more Sunday school classes taught in sign language.

★ District Court Proceedings ★

Week of May 14-21

Richard Harris waived examination on a charge of escape from prison and was bound over to circuit court for arraignment May 24.

Mauro Trevino pled guilty to drunk and disorderly and was fined \$50.

William Dunston was fined \$350 and placed on two years probation for impaired driving.

James Donnelly was fined \$200 and placed on one year probation for indecent exposure.

Daniel Beech was bound over to circuit court for arraignment on a charge of armed robbery.

Edwin Burton waived examination on a charge of escape from prison and was bound over to circuit court for arraignment on May 24.

Robert Lee Griffin waived examination on a reduced charge of uttering and publishing and was bound over to circuit court for arraignment May 24.

Malcolm Mascato, on a charge of malicious destruction of property valued at less than \$100, was fined \$100, placed on one year probation and ordered to pay restitution to the Willow Run School District. He was also ordered to work ten days as a volunteer at the school.

Richard Clark pled guilty to drunk and disorderly and was fined \$50.

John Eubanks pled guilty to driving without an operator's license and was fined \$75 and sentenced to three days in jail.

Charles Baker pled guilty to speeding and was fined \$31.

Everett Bailey pled guilty to speeding and was fined \$23.

Viola V. Kover pled guilty to speeding and was fined \$33.

James C. Kraske pled guilty to speeding and was fined \$21.

Robert Ponitz pled guilty to speeding and was fined \$25.

Scott W. Malloy pled guilty to speeding and was fined \$21.

Woodrow Roger English pled guilty to speeding and was fined \$35.

Ed Knight pled guilty to speeding and was fined \$21.

Thomas F. Mitchell was fined \$250 and placed on one and one-half years probation and ordered to participate in the Alcohol Safety Program for driving under the influence of liquor.

Edna Knight pled guilty to driving without an operator's permit on her person and was fined \$25.

Charles Haas pled guilty to an amended charge of speeding and was fined \$21.

Larry J. Alexander pled guilty to larceny under \$100 and was fined \$50 and placed on six months probation.

Alton Yeager did not appear on a charge of driving under the influence of liquor. A bench warrant was issued and his bond was forfeited.

Frank Josephson pled guilty to speeding and was fined \$31.

Dean Sameljes pled guilty to driving without proof of insurance and was fined \$26.

James Berry changed his plea to no contest on a charge of drunk and disorderly and was fined \$30.

Laurence Bohler did not appear on a charge of drunk and disorderly and a bench warrant was issued.

Lawrence Friedman pled guilty to speeding and was fined \$27.

Marvin Brightwell pled guilty to careless driving and was fined \$44.

Leland Barret pled guilty to an amended charge of impaired driving and will be sentenced July 1.

Andrew Kahwahen pled guilty to driving without registration plates and was fined \$16.

James Novess pled guilty to an amended charge of driving under the influence of liquor and will be sentenced July 1. He pled guilty to driving with a suspended license and was sentenced to 10 days in jail with credit for time already spent.

He pled guilty to driving an uninsured vehicle and was sentenced to 10 days in jail with credit for time already spent.

David Bush pled guilty to indecent exposure and was fined \$75.

Mark Watton pled guilty to furnishing intoxicants to minors and was fined \$50 and placed on six months probation.

Harry Krauss pled guilty to speeding and was fined \$31.

Letters to the Editor

To the Editor:

This letter is directed to Chelsea Band Booster members and friends.

For those new to the community or for those who have never been informed, all parents who have a child in band (from grade 5 through 12) are automatically members of the Chelsea Band Boosters. This is one club that requires no dues and has no waiting list to get in.

The Band Boosters' main functions are to run a few money-making projects (such as the candy sale, calendar sale, and the snow cone booth at the fair) to help support the band; to be chaperones when the band goes to out-of-town concerts and to Band Camp, and to help at the school with the distribution of uniforms in the fall and collecting them at the end of the year.

As parents of band children, we have attended some of the meetings over the past two years and have found the turnout to be very poor. We were lucky to get 10 people out. There was one exception to this, and this was the April meeting which was well attended because it was advertised as an open meeting for questions, comments, complaints, etc. There was much lively discussion for about two hours concerning many matters, and a lot of things were brought out in the open, which we believe is good. The point we would like to make is that if we can spend a couple of hours complaining about the band program, the directors or the kids, we ought to be able to spend a couple of hours sometime doing something to help the band program out.

Right now, the Band Boosters are trying to secure chaperones for the Band Camp in August. The Band Camp is sponsored by the Band Boosters and to date, we only have one couple to chaperone. We know that a few sacrifices have to be made if a couple is to volunteer one week in August to serve as chaperones, but we believe that the rewards will be far greater than one might expect.

If any parents are interested—or for that matter you need not have a child in band to volunteer—or if anyone has any questions, please contact the band directors, Warren Mayer or Ronald Harris. Maybe some small problem is holding you back from volunteering, and they may be able to help work it out, or ask any of the parents who have done it in the past.

Please, band parents, give the Band Boosters some thought. Help is needed from all of us, and it is our children who will benefit.

Mike & Jan Sweet

SUNDAY'S SERMON

★ Pattern for Living

Have you ever heard someone say something like this: "Very few people that I meet try to practice what they preach, or what others preach, so why should I?" They tell you times have changed and many of the things once thought of as wrong aren't considered wrong or evil by the people of the present age.

Unfortunately for some, morality and truth do not change from one generation to another. Many times we wish these rules and truths didn't exist, but the fact is they do and it is up to each of us to try to live by them. Just because "everyone" else is doing something that is wrong, doesn't make it right in God's eyes. And the day will come when we will all have to answer for the way we lived our lives.

God has given us a pattern and a way of living that brings us closer to Him. Many, however,

turn from God and go their own separate ways doing whatever they feel like doing. But one of the great things about God is His love and mercy for us—no matter how badly we have messed up our lives, God is willing to take us back.

RHODES SCHOLAR
Military Academy First Classman Kerry K. Pierce was selected as one of 32 Rhodes Scholars from the United States for 1974. Pierce will join 70 scholars from 17 countries for two years of study at Oxford, England.

Have Lunch Today
at the
MARK IV LOUNGE
PHONE 475-8141
1198 M-52 CHELSEA

SPRING BOWLING LEAGUES

Open to All Bowlers
STARTING MAY 13

Monday Nites - Men . . . 3-Man Teams
Wednesday Nites - Women . . 4 on a Team
Thursday Nites - Mixed
Tuesday Day League - Women

JR. & SR. HOUSE LEAGUES, NITE OWL LEAGUE
BANQUET MAY 10, 6 p.m. till??

CHELSEA LANES, Inc.
PHONE 475-8141
1189 M-52 CHELSEA

EXPERT
BUMPING and PAINTING
FREE ESTIMATES - ALL MAKES
LLOYD BRIDGES CHEVROLET
475-1373 CHELSEA, MICH.

BULOVA automatic date watches the preferred Graduation gift

No watch could please them more than one of these handsome Bulova automatics. The craftsmanship, precision and high-fashion styling are unsurpassed. Stop by today to choose the gift you want.



- A. Bragatone numerals on a white lacquer dial. Calendar. 17 jewels. \$85.
- B. Stainless steel. 17 jewels. Calendar. Contoured link bracelet. \$95.
- C. Skin-diver model. Elapsed time ring. 17 jewels. All stainless steel. \$115.
- D. Stainless steel. 23 jewels. Instant change date. Blue dial and strap. \$75.
- E. Depth-tested to 666 feet. 17 jewels. All stainless steel. \$100.
- F. Stainless steel. Instant change date and day. Blue dial. 17 jewels. \$90.

WINANS JEWELRY

FOR SALE

New Brick & Alum.
3 Bedrooms
2 Baths
2-Car Garage
Dining Area



761 FLANDERS STREET

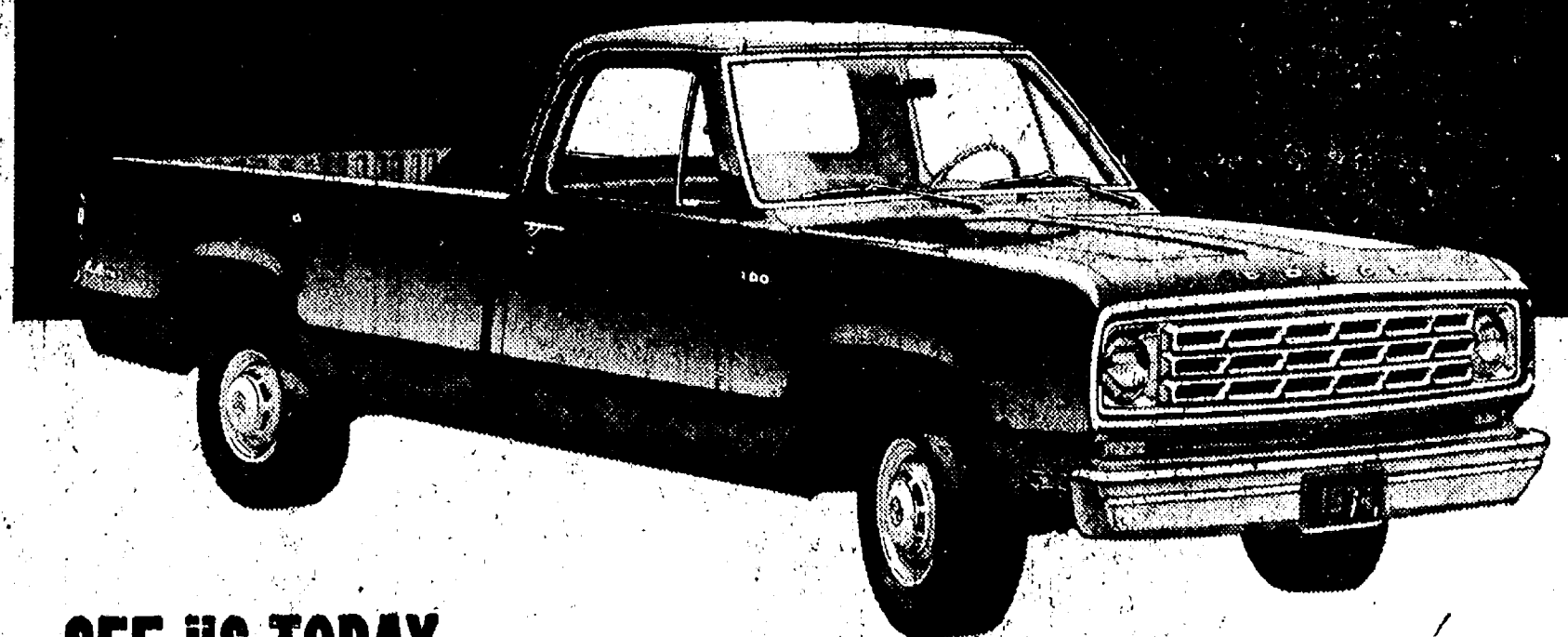
Brick Fireplace
Full Basement
1st Floor Laundry
Carpeted

CONGRATULATIONS! To the young men for their fine job in constructing this home through the Chelsea High School Building and Trade program. This Quality Ranch home is available now.

— Call —

FRISINGER-REALETY CO. - 475-8681 ROBERT H. THORNTON - 475-8629

FORD & CHEVY PICKUP BUYERS, HARD FACTS ABOUT DODGE.



SEE US TODAY.
CHECK OUR FEATURES, CHECK OUR PRICES.

CHECK HOW DODGE PICKUPS COMPARE TO THE COMPETITION.

Dodge CHRYSLER
AUTHORIZED DEALERS

	DODGE	FORD	CHEVY
ELECTRONIC IGNITION SYSTEM	X		
GREATER STANDARD PAYLOAD CAPACITY (1/2-TON MODELS)	X		
MOST MODELS	X		
CLUB CAB PICKUP	X		
SMALLEST 6-CYLINDER ENGINE	X		
LARGEST STANDARD FUEL TANK CAPACITY	X		
OPTIONAL AUTOMATIC SPEED CONTROL	X		
INDEPENDENT FRONT COIL SUSPENSION	X	X	X
6-FOOT UTILITY PICKUP	X		
HIGHEST CAPACITY ALTERNATOR	X	X	
1/2-TON CHASSIS/CAB MODELS	X	X	
OPTIONAL ANTISPIN DIFFERENTIAL	X	X	X
DOUBLE-WALL CONSTRUCTION	X		
BOLTLESS BOX FLOOR	X		
EASY-OFF TAILGATE	X	X	
FULL FOAM SEAT	X	X	X
FRONT DISC BRAKES	X	X	
BRIGHT FRONT BUMPER	X	X	

IT'S SMART TO SWITCH TO DODGE PICKUPS.
Come in now. We'll show you why.



AT VILLAGE MOTOR SALES, INC.
1185 MANCHESTER ROAD CHELSEA, MICHIGAN





STATE SEN. WILLIAM S. BALLENGER, center, addressed Chelsea Kiwanis Club Monday night on school taxes, both state-wide and related to the Chelsea School District. Shown with Sen. Ballenger are Julius Blass, Kiwanis vice-president; Charles Cox, Kiwanis president; Herman Koenn, Kiwanis program chairman; and Gerald Straub, Washtenaw County chairman of Ballenger for Congress Committee. Ballenger is currently seeking the Republican nomination in the 6th Congressional District.

Sen. Ballenger Discusses School Financing at Kiwanis Club Meet

State Senator William S. Ballenger told Chelsea Kiwanis Club Monday evening that, far from driving taxes up, the average tax increase per Michigan school district this year was the smallest of recent years. Outside Detroit, the state average tax rate rose from 25.98 to 26.2 operating mills—a rise of .22 mills or just 0.8 percent, he said.

In fact, when the rebates given under the "circuit breaker" for school taxes are figured in, school property taxes may be considered actually to have dropped by .21 mills this year, Ballenger observed.

He added that the amount of state aid per K-12 pupil has increased fully 59 percent in the

last five years. As a result, in 1973-74, for the first time in decades, the state is now paying more than half (50.9 percent) of the total system cost of K-12 public education in Michigan.

The 33-year-old lawmaker, who is a candidate for the Republican nomination in the 6th Congressional District, pointed out that the Chelsea School District has a \$27,506 per pupil SEV for '73-74, somewhat above the state average of \$22,000. It levies 22.2 operating mills, somewhat below the state average of 25.58 (26.2 outside of Detroit).

In accordance with the Michigan Supreme Court ruling (which was modified only after the legisla-

ture acted on school-finance reform), the local tax base or "wealth" of a district cannot be permitted to determine or affect school revenue. Such revenue now varies only according to tax rate.

The lowest-SEV or "poorest" district in the state, by levying 22.2 mills in 1974-75, will have the same \$68.80 per pupil to spend as Chelsea. So will a high-SEV or "rich" \$39,000 district, he said.

Ballenger stated that if the Chelsea district millage request is approved by voters on June 11, Chelsea will still continue to levy less than 25 operating mills in 1974-75 and will receive state debt aid for next year. If the three mills levied for 1973-74 represents actual debt-service needs and the 1974-75 SEV can be estimated at \$29,769 per pupil, this form of state aid for the 1974-75 year will amount to about \$19.52 per pupil, and will permit the debt levy to be lowered by about one mill in 1975-76, to 2.115 mills.

The debt-millage reduction may be utilized in an appeal for additional operating millage, as each additional mill gained will be guaranteed to yield \$40 per pupil in 1975-76, he contended.

Subscribe today to The Standard!

The Rev. John Fall Returning To Direct Retirement Homes

The Rev. John M. Fall, who served as administrator of the Chelsea United Methodist Home from 1906 to 1969, was appointed last Friday to the executive directorship of the Retirement Homes of the Detroit Annual Conference of the United Methodist Church, Inc.

Retirement Homes of the Detroit Annual Conference of the United Methodist Church, an agency of the United Methodist Church, is charged with the administration and operation of the denomination's retirement programs in the Detroit Annual Conference, which includes the Chelsea center as well as Boulevard Temple in Detroit.

The Rev. Fall's appointment to the position was announced Friday at the annual meeting of the board of trustees of the Retirement Homes organization. The current executive director, Edward H. Terry, will remain in his position until Aug. 31, with the Rev. Fall serving as associate.

Since leaving his administrative post at Chelsea United Methodist Home, the Rev. Fall has served in a similar capacity at the Franklin, Ind., United Methodist Home.

He is a graduate of Wayne State University and Oberlin Graduate School of Theology. He has served in numerous professional and religious organizations, including Michigan Association of Non-Profit Homes, Michigan Society of Gerontology, and American Association of Homes for the Aging. He has also served as a guest lecturer at the University of Michigan Institute of Gerontology Residential Institute on Retirement Housing Management.

Executive offices of the Retirement Homes of the Detroit Annual Conference are at 407 N. Main St., Ann Arbor. The Rev. Fall and his wife, Joanne, and sons, Mark and John, will make their home in Chelsea.

JV Girls Softball Team Defeats Dexter in Finale

No, it isn't basketball season again, but Chelsea junior varsity girls did defeat Dexter Tuesday night, 37-29. In softball.

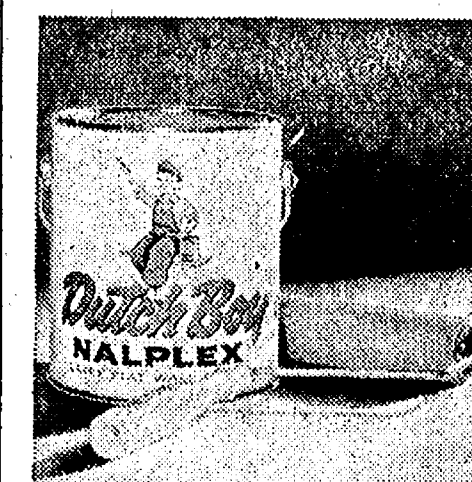
Karen Tobin led the Chelsea attack with six big hits, while Sue Schultze contributed four, including a home run and a triple. Karen Keiser added a home run and two doubles.

Pounding two hits for the local squad were Lesley Clark, Kyle Parker, Eddie Houk, Laurie Klink, Apache Huttling, and Diana Fletcher. Adding one hit each were Penny Kincer, Kim Dresch, Karen Milliken and Dawn Bucholz.

The JV ended the season with a fine 5-2 record.

Thomas Tirb Earns Degree at Olivet

Thomas William Tirb, son of Mr. and Mrs. Theodore Tirb, 626 Island Lake Rd., received a BA degree during Commencement ceremonies at Olivet College May 12. He also received a Michigan State Secondary Provisional Teaching Certificate.



THE LATEX WALL PAINT WITH THE

BUILT-IN SECOND COAT

So high in hiding, so smooth in leveling, one coat looks like two!
* especially for rollers—odorless
* fast drying—soap and water clean-up

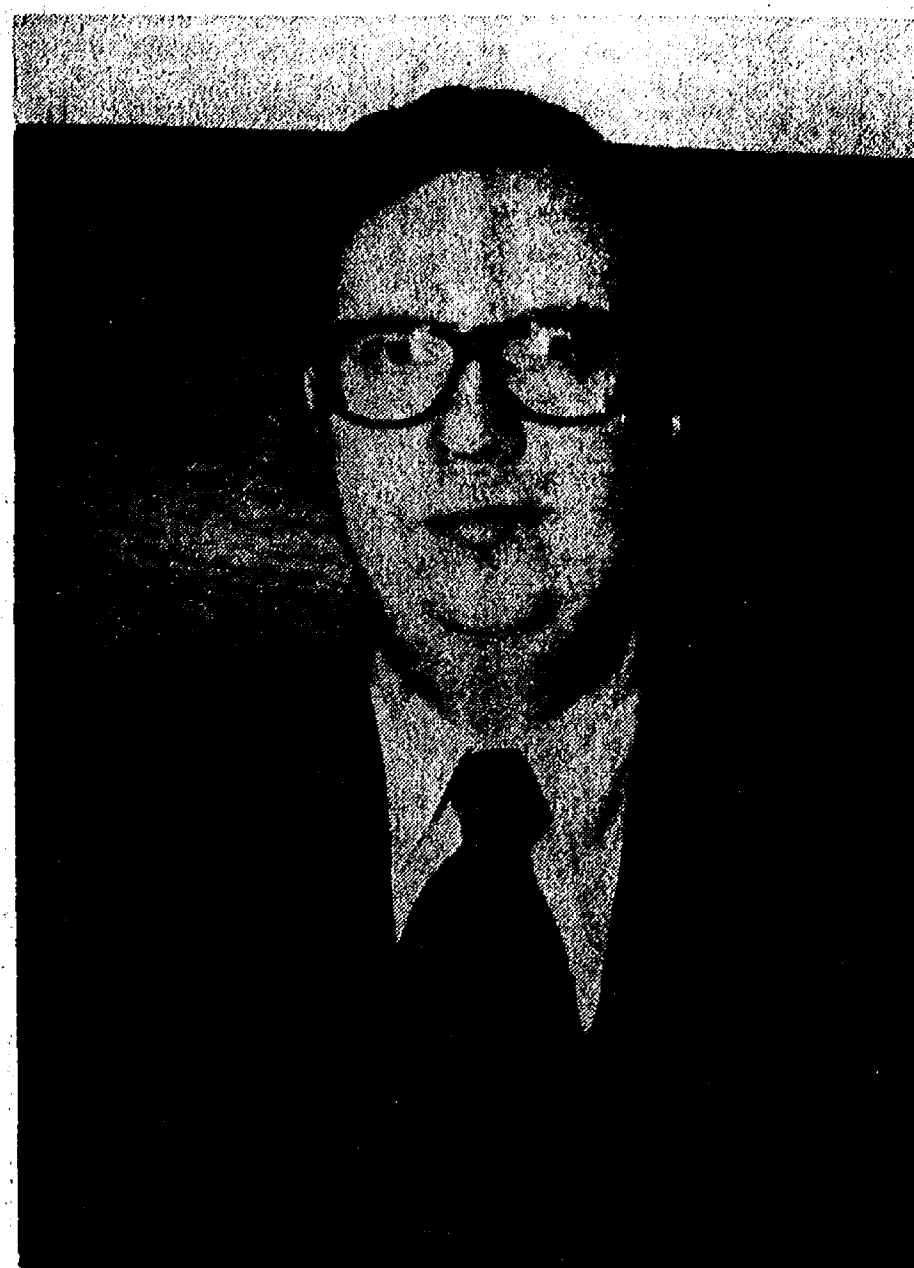
NEW Dutch Boy NALPLEX.
Latex flat wall finish

See a demonstration at our store

MERKEL BROS.

Phone 475-8621

If there's quality on the inside, there's a Dutch Boy on the outside.



REV. JOHN FALL

Summer Volunteers Sought At Chelsea Methodist Home

An anonymous person once wrote, "Leisure is a beautiful garment, but it will not do for constant wear."

Chelsea United Methodist Home offers the residents of surrounding communities the opportunity to mix a bit of service with the pleasure of summertime by volunteering to give a few hours each week, or month, to add extra cheer and "brighten the day" for residents at the Home.

Someone who cares enough to take time to visit and listen, or offer to walk with those of uncertain step, is greatly appreciated. The smile of one who has a friend to take them for a wheelchair ride, to enjoy the beauty of the outdoors, is a reward to be long remembered.

An auto ride is a thrill for those who find it difficult to walk but a short distance.

A visit to the home of "their friend," or a shopping trip, or a

time for playing games, are all "special treats."

All little deeds of kindness that bring a bit of extra joy to the shut-ins are proof that somebody cares. Men, women and youth are welcome, Miss Martha Earles, volunteers of the United Methodist Home, to listen, to care, to serve, to cheer.

For further information regarding the program please contact the Home, Miss Martha Earles, volunteer director, phone 475-8633 and help make this a very enjoyable and rewarding summer for someone else and for yourself.

DRIED BEEF BOUNTY

Dried beef which comes in both jars and packages can appear in the menu in many ways. Shred it and use it in cream cheese with horseradish as a dip, for example. Shredded, it can go into a cream sauce to be served over baked, boiled or mashed potatoes, dumplings or biscuits.

Girls Softball Team Wins Twice To Remain Undefeated

Chelsea rallied for one victory and put another away in the early innings in girls softball action this week. Chelsea girls remain undefeated at 7-0.

After being down, 10-2 at the end of two innings last Wednesday, Chelsea girls rallied to defeat Saline 17-13.

Big blow for Chelsea was a grand slam home run by Lori Fritz in the third inning. Teresa Breza, Brenda Salyer and Fritz each were good for a pair of hits.

Pitcher of record was Brenda Salyer, who pitched the complete game, and struck out six Hornets batters.

In a non-league game Monday at Stockbridge, Chelsea came home the winner by a top-sided score of 24-6.

Every player saw at least three innings of action and all turned

in creditable jobs, according to Coach Ann Schaffner.

Leading hitters were Kathy Schmitt, Teresa Breza, Brenda Salyer, Char Steinaway, and Kathy Kuhl, all with three hits each. Providing two hits each were Marilynn King, Pam Boyer, and Alice Juergens.

In junior varsity action, Saline downed Chelsea last Wednesday, 25-14. Ten Chelsea errors aided the Saline squad in their efforts.

Facing Chelsea hitters in the losing cause was Lesley Clark, who pounded out four hits, followed by Karen Kieser, Diana Fletcher, Teri Lutovsky, and Sue Schulze, who were each good for two. Dana Clifton and Karen Milliken each had one.

Telephone Your Club News To 475-1371

BIG 8x10 LIVING COLOR PORTRAIT

AT 99¢

Compare at \$125.00

GENUINE NATURAL COLOR PORTRAITS
Fast dry and color lasting for years. No fading. No blurring. No blurring. No blurring.

SELECTION OF PROOFS
A 10 Proof 14 Proof 20 Proof

FOR ALL AGES
Babies, children, adults. Group photographs of all nationalities and all ages.

FREE TO ALL SENIOR CITIZENS
Call 475-1371 for complete details. No charge for 40 years of age.

LIMITED OFFER!
Special price while supplies last.

Approved Special. Read & See before you buy.

PROOF CHARMS AVAILABLE TO CUSTOMERS

TELL YOUR FRIENDS ABOUT THIS SPECIAL OFFER

RICK'S MARKET

CHELSEA

Thurs., May 23, 9 to 12, 1 to 5

RICK'S MARKET

The Little Store That Wants To Do Big Things!

20490 M-52 North

PHONE 475-2898

Come out to Rick's and meet the friendly people — Ruth, Shirley, Joan, Tom, Jack, Terry, Rick, and Harold "the old grouch"!

SPARTAN

JUMBO BREAD
2 1 1/2-Lb. Loaves **97¢**

VELVET

PEANUT BUTTER
48-Oz. Jar **\$1.75**

KELLOGG'S

SUGAR POPPS
13-Oz. Box **59¢**

FARMER PEET'S TWIN PACK

BOLOGNA
12-Oz. Pkg. **89¢**

BORDEN'S

HOMO MILK
gal. **\$1.29**

SPARTAN FROZEN

ORANGE JUICE
16-Oz. Can **55¢**

LARGE SIZE TWIN CAKE

IVORY SOAP
9 1/2-Oz. Bar **29¢**

SANI-FLUSH
34-Oz. Can **55¢**

Fresh Donuts & Delicious Bar-B-Q Ribs & Chicken Daily
FRESH BAKED BREAD ON WEEK-ENDS!

Our Specials Are Good for the Whole Week - Thurs, May 23 thru Wed, May 29
NOT JUST 4 DAYS!

MEMORIAL DAY TIRE SALE

FULL 4-PLY POLYESTER

(Not Nylon)

\$18.95

STEEL BELTED RADIALS

\$35.74

CHARGE IT ON YOUR:

BANK AMERICARD, MARSTER CHARGE, AMERICAN EXPRESS, CARTE BLANCHE, DINERS OR STANDARD OIL CARD

SIZE	PRICE	F.E.T.	SIZE	PRICE	F.E.T.
C78-13	\$20.70	\$1.99	ER78-14	\$42.68	\$2.58
C78-14	\$21.14	\$2.07	FR78-14	\$44.77	\$2.81
E-18-14	\$22.52	\$2.24	GR78-14	\$46.35	\$2.95
G78-14	\$26.24	\$2.55	HR78-14	\$48.35	\$3.15
G78-14	\$26.83	\$2.77	GR78-15	\$47.40	\$3.05
G78-15	\$26.16	\$2.63	HR78-15	\$49.03	\$3.26
H78-15	\$27.52	\$2.82	JR78-15	\$50.84	\$3.44
J78-15	\$30.17	\$3.29	LR78-15	\$52.21	\$3.60
L78-15	\$30.98	\$3.13			

15-MINUTE SERVICE — FREE MOUNTING

GUARANTEE

Sonic PASSENGER TIRES ...

FREE REPLACEMENT GUARANTEE

(during the first 50% of original tread depth)

"THE BEST TIRE GUARANTEE IN THE INDUSTRY"



PALMER FORD

62 Years in Chelsea — Since April, 1912
475-1301

WE DON'T HAVE TO DO MORE THAN ANYONE YOU EVER BARGAINED FOR